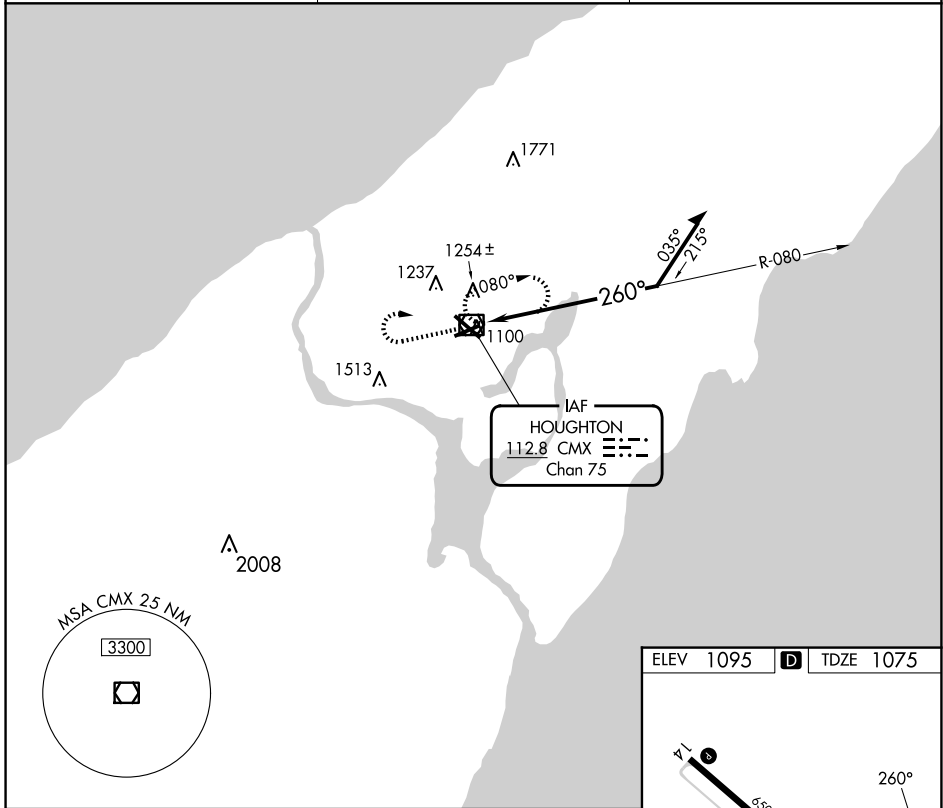


VOR/DME CMX 112.8 Chan 75	APP CRS 260°	Rwy Idg TDZE Apt Elev	5201 1075 1095
--	------------------------	-----------------------------	---

VOR RWY 25
HOUGHTON COUNTY MEML (CMX)

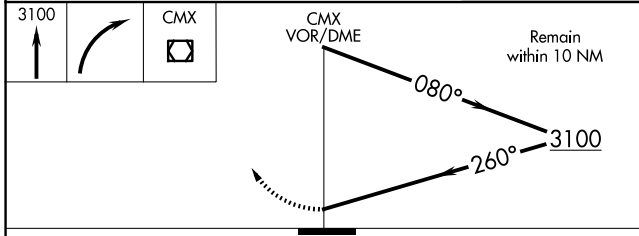
<p>Rwy 25 helicopter visibility reduction below 3/4 SM NA.</p>	<p>MISSED APPROACH: Climb to 3100 then right turn direct CMX VOR/DME and hold.</p>
--	--

ASOS 125.675	MINNEAPOLIS CENTER 133.55 379.1	UNICOM 122.7 (CTAF) 0
------------------------	---	---------------------------------

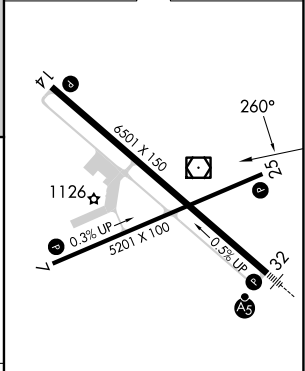


EC-1, 23 JAN 2025 to 20 FEB 2025

EC-1, 23 JAN 2025 to 20 FEB 2025



ELEV 1095	D	TDZE 1075
-----------	----------	-----------



CATEGORY	A	B	C	D
S-25	1620-1	545 (600-1)	1620-1 3/8 545 (600-1 3/8)	1620 1 3/4 545 (600-1 3/4)
C CIRCLING	1620-1 525 (600-1)	1660-1 565 (600-1)	1700-1 3/4 605 (700-1 3/4)	1820-2 1/4 725 (800-2 1/4)

MIRL Rwy 7-25 **0**
REIL Rwy 7, 14 and 25 **0**
HIRL Rwy 14-32 **0**