

(HSR2.HSR) 23334

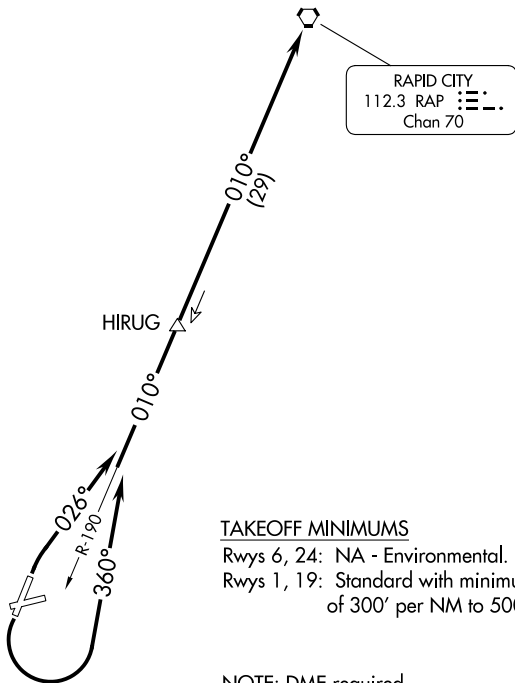
HOT SPRINGS TWO DEPARTURE

AL-904 (FAA)

HOT SPRINGS MUNI (HSR)
HOT SPRINGS, SOUTH DAKOTA

**TOP ALTITUDE:
7000**

DENVER CENTER
127.95 338.2



TAKEOFF MINIMUMS

Rwys 6, 24: NA - Environmental.
Rwys 1, 19: Standard with minimum climb
of 300' per NM to 5000.

NOTE: DME required.

NOTE: Chart not to scale.



DEPARTURE ROUTE DESCRIPTION

TAKEOFF RUNWAY 1: Climb heading 026° to intercept RAP VORTAC R-190 to RAP VORTAC, thence. . . .

TAKEOFF RUNWAY 19: Climbing left turn heading 360° to intercept RAP VORTAC R-190 to RAP VORTAC, thence. . . .

. . . .maintain 7000, expect filed altitude 10 minutes after departure.

HOT SPRINGS TWO DEPARTURE
(HSR2.HSR) 21JUL16

HOT SPRINGS, SOUTH DAKOTA
HOT SPRINGS MUNI (HSR)

NC-1, 23 JAN 2025 to 20 FEB 2025

NC-1, 23 JAN 2025 to 20 FEB 2025