

WAAS CH 78572 W32A	APP CRS 324°	Rwy Idg 7345 TDZE 153 Apt Elev 153
----------------------------------------	------------------------	---------------------------------------------------------------

RNAV (GPS) Z RWY 32

MONMOUTH EXEC (BLM)

RNP APCH - GPS.

⚠ For uncompensated Baro-VNAV systems, LNAV/VNAV NA below -15°C or above 54°C.
⚠ Rwy 32 helicopter visibility reduction below 3/4 SM NA. When local altimeter setting not received, use Lakehurst altimeter setting and increase LPV DA to 442 feet, increase LNAV/VNAV DA to 442 feet. Baro-VNAV NA when using Lakehurst altimeter setting.

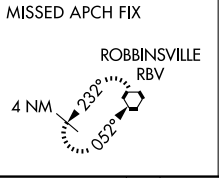
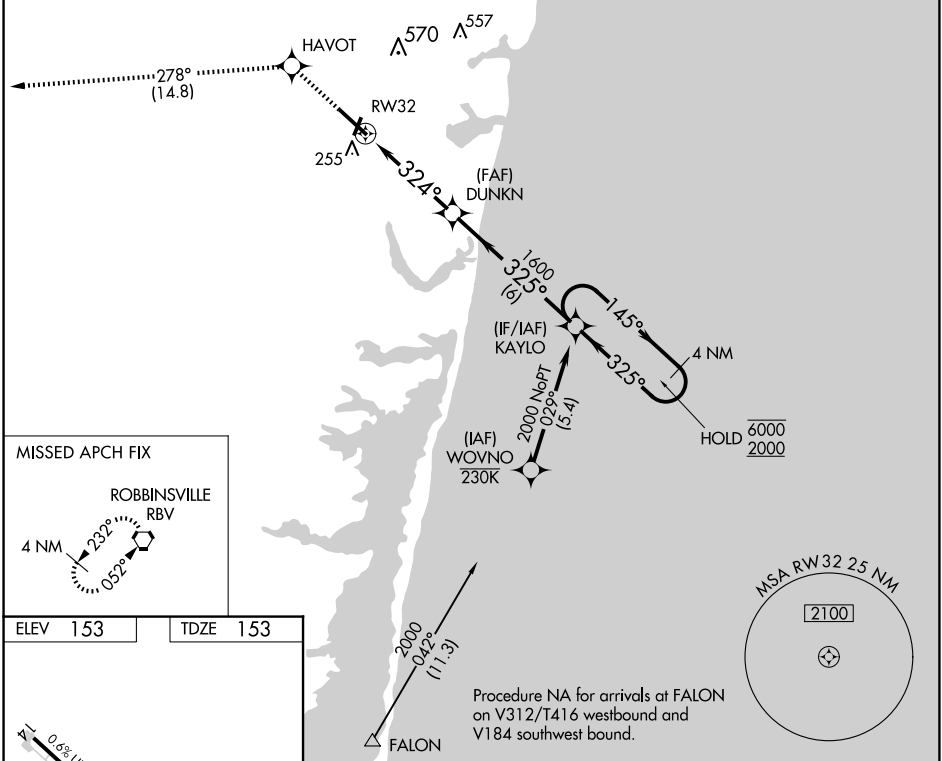
MISSED APPROACH:
 Climb to 2000 direct
 HAVOT, track 278° to
 RBV VORTAC and hold.

AWOS-3PT
121.625

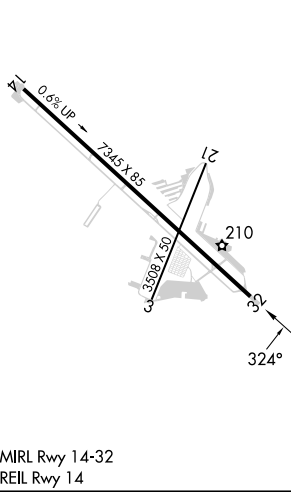
MC GUIRE APP CON
126.475 363.8

CLNC DEL
126.15

UNICOM
123.0 (CTAF)



ELEV 153	TDZE 153
----------	----------



2000	↑ HAVOT	↔ RBV	4 NM Holding Pattern
	↔ 278°		
	DUNKN	KAYLO	4 NM Holding Pattern
	1600	145° → 6000	
		← 325° 2000	
	RWY 32	324°	GP 3.10° TCH 51
	4.2 NM	6 NM	
CATEGORY	A	B	C
LPV DA		403-1	250 (300-1)
LNAV/VNAV DA		403-1	250 (300-1)

NE-2, 23 JAN 2025 to 20 FEB 2025

NE-2, 23 JAN 2025 to 20 FEB 2025