

HI-TACAN X RWY 23

TACAN NBC Chan 42	APCH CRS 221°	Rwy ldg TDZE Arprt Elev	12,202 16 37
-----------------------------	-------------------------	-------------------------------	---

[USN]

BEAUFORT MCAS (MERRITT FLD) (KNBC)

ALSF-1

 MISSED APPROACH: Climb to 500 then climbing right turn to 3000, join NBC TACAN R-307 to direct BRAYS and hold.

* When ALS inop, increase vis to 1 mile.

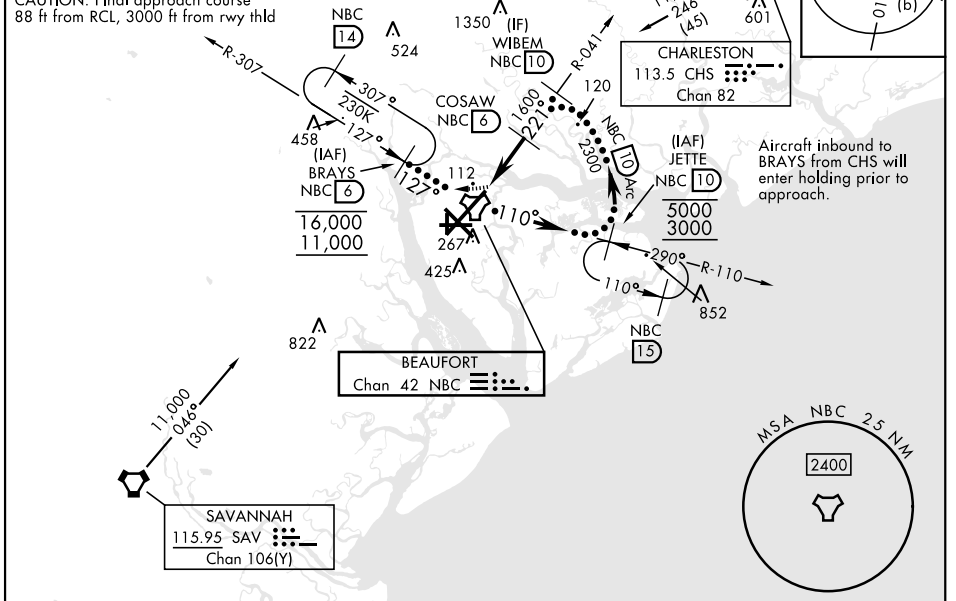
ATIS ★ 279.525	APP CON 125.125 292.125 (ABV 3000) 123.7 269.125 (3000 and BLW)	TOWER★ 119.05 342.875	GND CON 128.15 348.625	CLNC DEL 128.15 254.375	ASR/PAR
--------------------------	---	---------------------------------	----------------------------------	-----------------------------------	---------

Knots	60	120	180	240	300	360
V/V(fpm)	545	1090	1635	2180	2725	3270

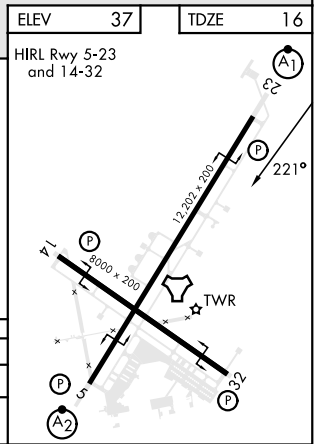
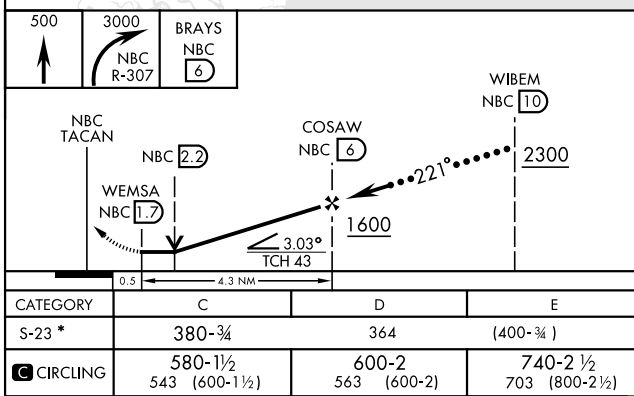
Min climb of 545 ft/NM to 3000 - Controlling Obstacle Unk

CAUTION: Intmed seg len 4 NM

CAUTION: Final approach course 88 ft from RCL, 3000 ft from rwy thld



EMERG SAFE ALT 100 NM 3100



HI-TACAN X RWY 23

SE-2, 23 JAN 2025 to 20 FEB 2025

SE-2, 23 JAN 2025 to 20 FEB 2025