

# HI-TACAN Z RWY 23

TACAN Chan <b>42</b>	NBC <b>221°</b>	APCH CRS <b>221°</b>	Rwy ldg <b>12,202</b>	TDZE <b>16</b>	Arpt Elev <b>37</b>
-------------------------	--------------------	-------------------------	--------------------------	-------------------	------------------------

[USN]

BEAUFORT MCAS (MERRITT FLD) (KNBC)

ALSF-1
 

 MISSED APPROACH: Climb to 500, then climbing right turn to 3000, intercept NBC TACAN R-307 direct BRAYS and hold.

\*When ALS inop, increase vis to 1 mile.

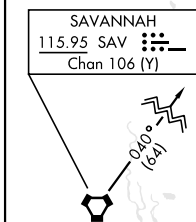
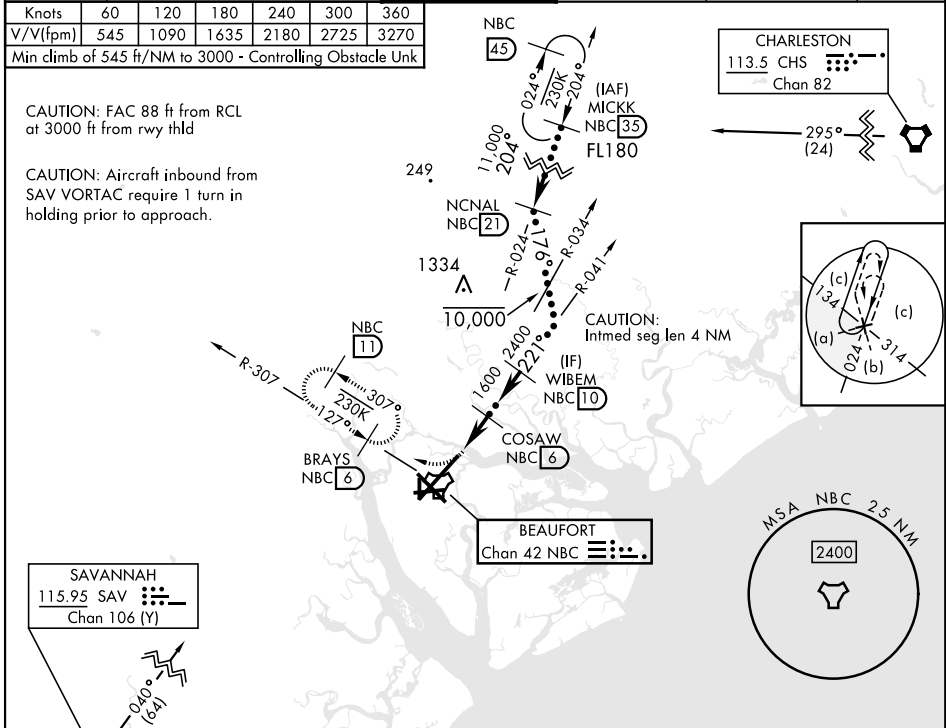
ATIS ★ <b>279.525</b>	APP CON (ABV 3000) <b>125.125 292.125</b> <b>123.7 269.125</b>	TOWER ★ <b>119.05 342.875</b>	GND CON <b>128.15 348.625</b>	CLNC DEL <b>128.15 254.375</b>	ASR/PAR
--------------------------	--	----------------------------------	----------------------------------	-----------------------------------	---------

Knots	60	120	180	240	300	360
V/V(fpm)	545	1090	1635	2180	2725	3270

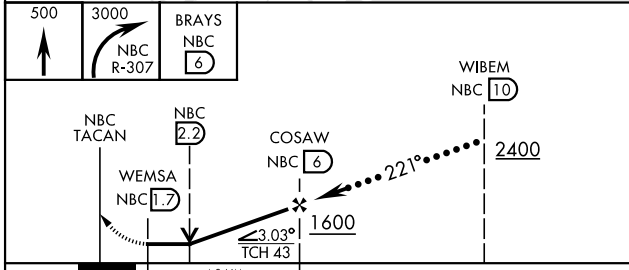
Min climb of 545 ft/NM to 3000 - Controlling Obstacle Unk

CAUTION: FAC 88 ft from RCL at 3000 ft from rwy thld

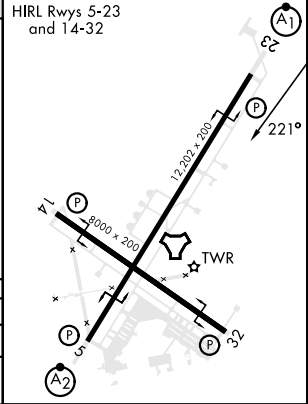
CAUTION: Aircraft inbound from SAV VORTAC require 1 turn in holding prior to approach.



EMERG SAFE ALT 100 NM 3100



ELEV	37	TDZE	16
------	----	------	----



CATEGORY	C	D	E
S-23 *	380-3/4	364	(400-3/4)
CIRCLING	580-1 1/2 543 (600-1 1/2)	600-2 563 (600-2)	740-2 1/2 703 (800-2 1/2)

# HI-TACAN Z RWY 23

SE-2, 23 JAN 2025 to 20 FEB 2025

SE-2, 23 JAN 2025 to 20 FEB 2025