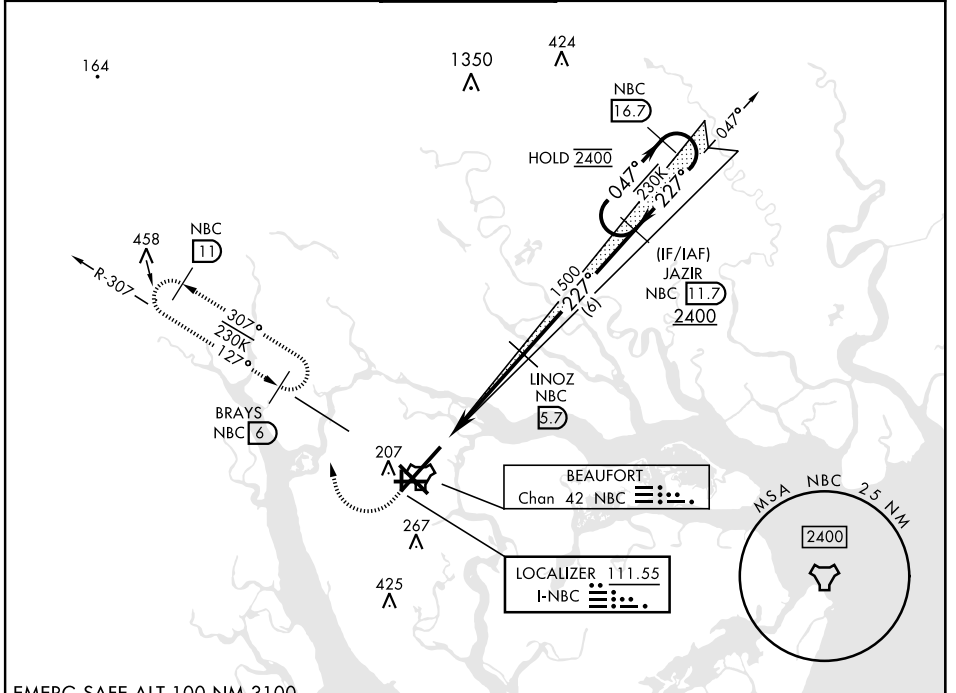


ILS or LOC Y RWY 23

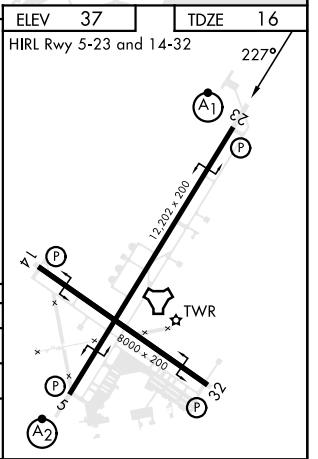
LOC I-NBC 111.55	APCH CRS 227°	Rwy ldg 12,202 TDZE 16 Arprt Elev 37	[USN]	BEAUFORT MCAS (MERRITT FLD) (KNBC)		
RNAV or RADAR required for missed approach.			ALSIF-1 	MISSED APPROACH: Climb to 500, then climbing right turn to 3000, join NBC TACAN R-307 direct BRAYS and hold. Continue climb in hold to 3000.		
*When ALS inop, increase vis to ¾ mile. **When ALS inop, increase CAT AB vis to 1 mile; CAT CDE vis to 1½ miles.						
ATIS ★ 279.525	APP CON 125.125 292.125 (ABV 3000) 123.7 269.125 (3000 and BLW)		TOWER ★ 119.05 342.875	GND CON 128.15 348.625	CLNC DEL 128.15 254.375	ASR/PAR



SE-2, 23 JAN 2025 to 20 FEB 2025

SE-2, 23 JAN 2025 to 20 FEB 2025

EMERG SAFE ALT 100 NM 3100					
500 ↑	3000 NBC R-307	BRAYS NBC 6	JAZIR 11.7	16.7	
CATEGORY	A	B	C	D	E
S-ILS 23*	216-½		200	(200-½)	
S-LOC 23**	460-½	444 (500-½)	460-7/8	444	(500-7/8)
C CIRCLING	560-1	523 (600-1)	580-1½ 543 (600-1½)	600-2 563 (600-2)	740-2½ 703 (800-2½)



ILS or LOC Y RWY 23