

BEAUFORT, SOUTH CAROLINA

# ILS or LOC Z RWY 23

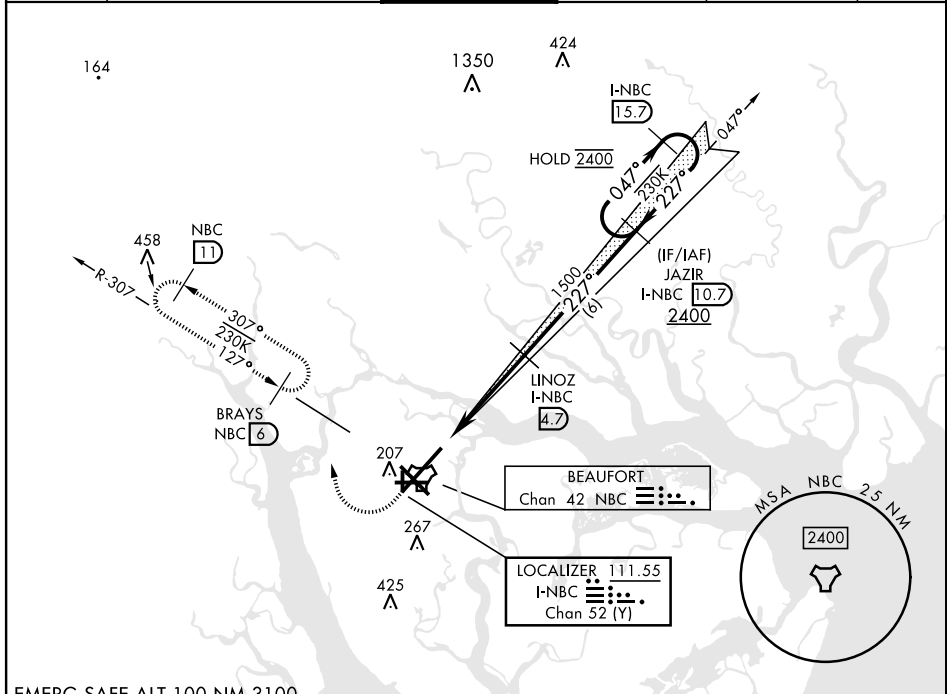
LOC/DME I-NBC <b>111.55</b> Chan <b>52 (Y)</b>	APCH CRS <b>227°</b>	Rwy Idg <b>12,202</b> TDZE <b>16</b> Arprt Elev <b>37</b>
--	-------------------------	---

[USN]

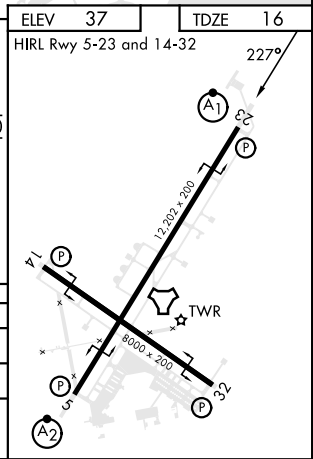
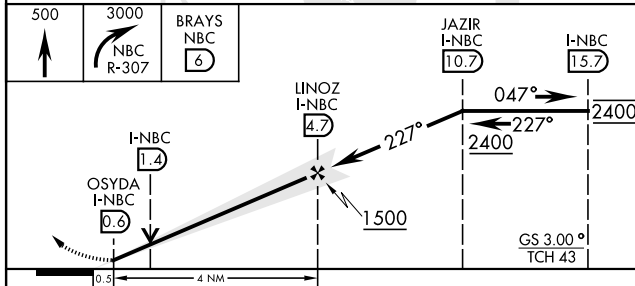
BEAUFORT MCAS (MERRITT FLD) (KNBC)

RNAV or RADAR required for missed approach.	ALSF-1 	MISSED APPROACH: Climb to 500, then climbing right turn to 3000, join NBC TACAN R-307 direct BRAYS and hold. Continue climb in hold to 3000.
---	------------	--

ATIS ★ <b>279.525</b>	APP CON <b>125.125 292.125</b> (ABV 3000) <b>123.7 269.125</b> (3000 and BLW)	TOWER ★ <b>119.05 342.875</b>	GND CON <b>128.15 348.625</b>	CLNC DEL <b>128.15 254.375</b>	ASR/PAR
--------------------------	---	----------------------------------	----------------------------------	-----------------------------------	---------



EMERG SAFE ALT 100 NM 3100



CATEGORY	A	B	C	D	E
S-ILS 23*	216-½		200	(200-½)	
S-LOC 23**	460-½	444 (500-½)	460-¾	444	(500-¾)
<b>C</b> CIRCLING	560-1	523 (600-1)	580-1½ 543 (600-1½)	600-2 563 (600-2)	740-2½ 703 (800-2½)

BEAUFORT, SOUTH CAROLINA  
Orig 25JAN24

32°29'N-80°43'W

BEAUFORT MCAS (MERRITT FLD) (KNBC)

# ILS or LOC Z RWY 23

SE-2, 23 JAN 2025 to 20 FEB 2025

SE-2, 23 JAN 2025 to 20 FEB 2025