

# RNAV (GPS) RWY 14

WAAS Chan <b>91240</b> <b>W14A</b>	APCH CRS <b>140°</b>	Rwy ldg TDZE Arprt Elev <b>8000</b> <b>32</b> <b>37</b>
--	-------------------------	--

[USN]

BEAUFORT MCAS (MERRITT FLD) (KNBC)

RNP APCH

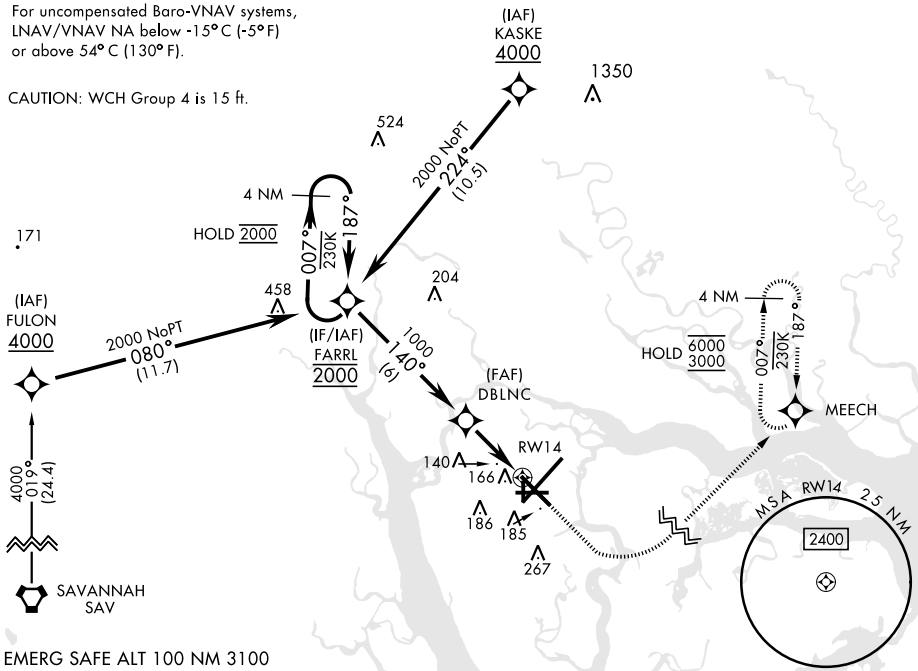
RADAR required for arrivals via KASKE or FARRL IAFs.

MISSED APPROACH: Climb to 700, then climbing left turn to 3000 direct MEECH and hold.

ATIS ★ <b>279.525</b>	APP CON (ABV 3000) <b>125.125 292.125</b> (3000 and BLW) <b>123.7 269.125</b>	TOWER ★ <b>119.05 342.875</b>	GND CON <b>128.15 348.625</b>	CLNC DEL <b>128.15 254.375</b>	ASR/ PAR
--------------------------	---	----------------------------------	----------------------------------	-----------------------------------	-------------

For uncompensated Baro-VNAV systems,  
LNAV/VNAV NA below -15°C (-5°F)  
or above 54°C (130°F).

CAUTION: WCH Group 4 is 15 ft.

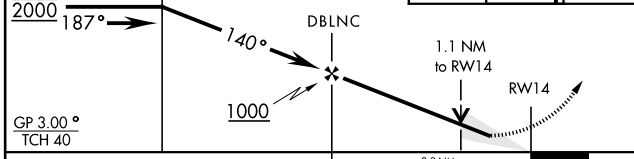


SE-2, 23 JAN 2025 to 20 FEB 2025

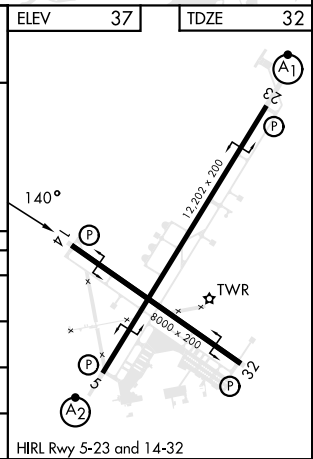
SE-2, 23 JAN 2025 to 20 FEB 2025

EMERG SAFE ALT 100 NM 3100

4 NM Holding Pattern FARRL	700	3000	MEECH	ELEV 37	TDZE 32
----------------------------	-----	------	-------	---------	---------



CATEGORY	A	B	C	D
LPV DA	232-3/4		200	(200-3/4)
LNAV/VNAV DA	416-1 1/8		384	(400-1 1/8)
LNAV MDA	420-1	388 (400-1)	420-1 1/8	388 (400-1 1/8)
<b>C</b> CIRCLING	560-1	523 (600-1)	580-1 1/2	600-2
			543 (600-1 1/2)	563 (600-2)



# RNAV (GPS) RWY 14