

BEAUFORT, SOUTH CAROLINA

# RNAV (GPS) RWY 23

WAAS Chan <b>93379</b> <b>W23A</b>	APCH CRS <b>227°</b>	Rwy Idg <b>12,202</b> TDZE <b>16</b> Arprt Elev <b>37</b>
--	-------------------------	---

[USN]

BEAUFORT MCAS (MERRITT FLD) (KNBC)

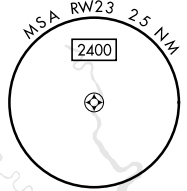
RNP APCH	ALSIF-1 	MISSED APPROACH: Climb to 3000 direct ATBUY and hold. Continue climb in hold to 3000.
RADAR required.		

∇ \*\*When ALS inop, increase vis to 3/4 mile.  
∇ \*\*When ALS inop, increase vis to 1 mile.

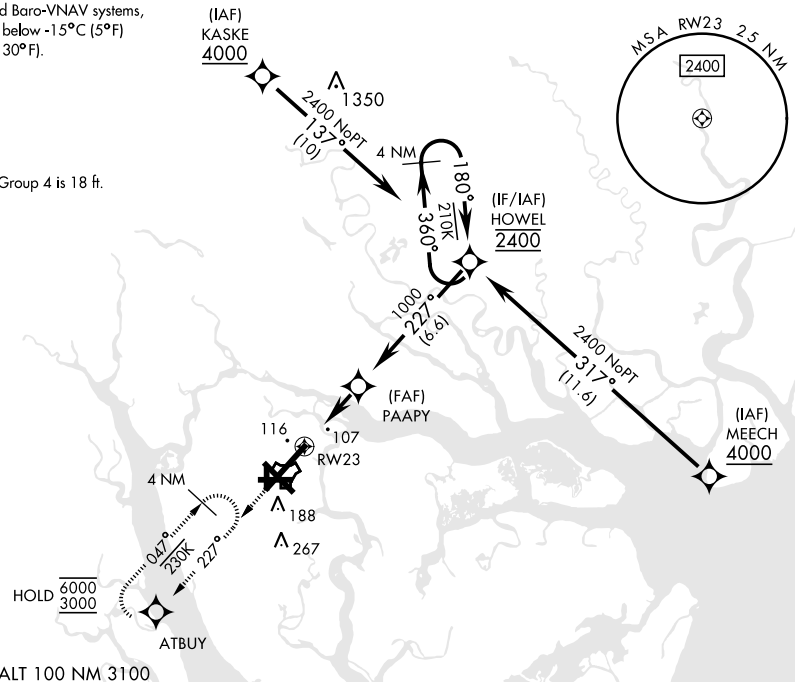
ATIS ★ <b>279.525</b>	APP CON <b>125.125 292.125</b> (ABV 3000) <b>123.7 269.125</b> (3000 and BLW)	TOWER ★ <b>119.05 342.875</b>	GND CON <b>128.15 348.625</b>	CLNC DEL <b>128.15 254.375</b>	ASR/ PAR
--------------------------	---	----------------------------------	----------------------------------	-----------------------------------	-------------

For uncompensated Baro-VNAV systems,  
LNAV/VNAV NA below -15°C (5°F)  
or above 54°C (130°F).  
• 164

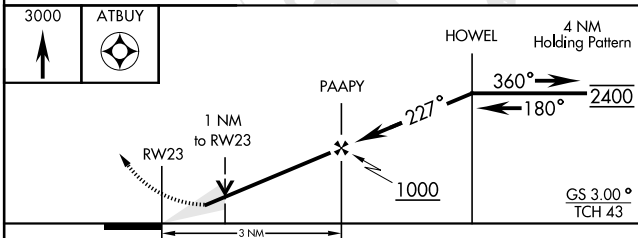
(IAF)  
KASKE  
4000



CAUTION: WCH Group 4 is 18 ft.

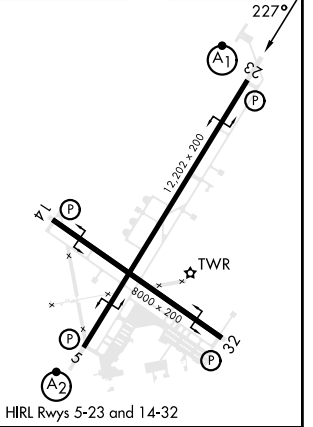


EMERG SAFE ALT 100 NM 3100



ELEV	37	TDZE	16
------	----	------	----

CATEGORY	A	B	C	D
LPV DA *	216-1/2		200	(200-1/2)
LNAV/ VNAV DA **	380-5/8		364	(400-3/8)
LNAV MDA **	380-1/2	364 (400-1/2)	380-3/4	364 (400-3/4)
CIRCLING	560-1	523 (600-1)	580-1 1/2 543 (600-1 1/2)	600-2 563 (600-2)



BEAUFORT, SOUTH CAROLINA  
Amdt 5 11JUL24

32° 29' N-80° 43' W

BEAUFORT MCAS (MERRITT FLD) (KNBC)

# RNAV (GPS) RWY 23

SE-2, 23 JAN 2025 to 20 FEB 2025

SE-2, 23 JAN 2025 to 20 FEB 2025