


LOC/DME I-OOS 111.55 Chan 52 (Y)	APP CRS 095°	Rwy Idg TDZE Apt Elev	5000 39 55
--	------------------------	-----------------------------	---------------------------------------

ILS or LOC RWY 9R

ORLANDO SANFORD INTL (SFB)

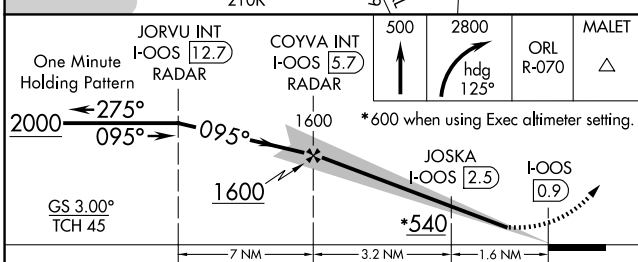
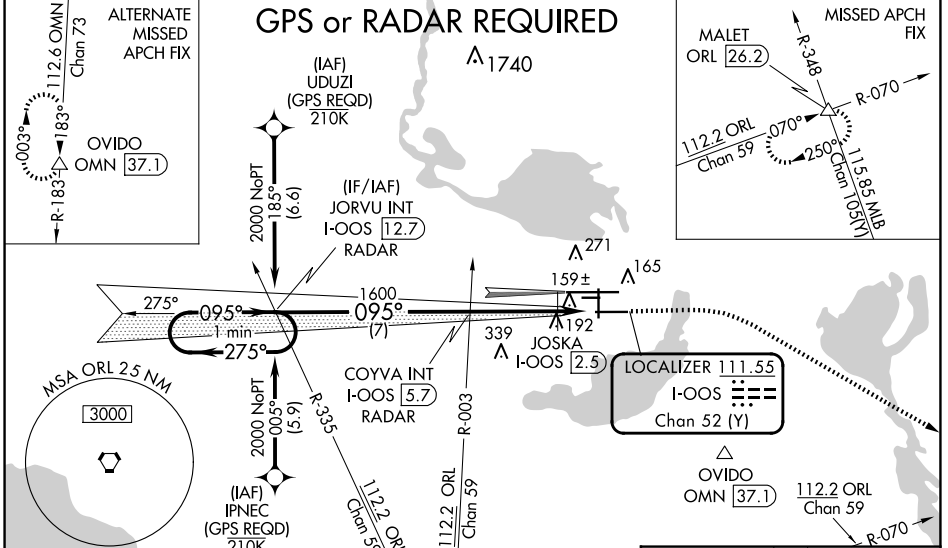
⚠ When local altimeter setting not received, use Exec altimeter setting and increase S-ILS DA to 282, and all MDA 60 feet; increase S-LOC 9R Cat C, D visibility ¼ mile, Circling Cat C visibility ½ mile and JOSKA Fix Minimums S-LOC 9R Cats C, D visibility ¼ mile. Simultaneous approach authorized with Rwy 9L. Night landing: Rwy 27C NA.

MALS R



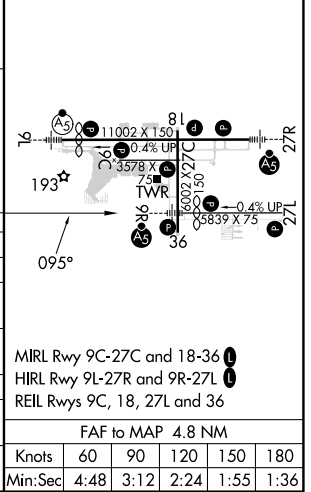
MISSED APPROACH: Climb to 500 then climbing right turn to 2800 on heading 125° and ORL VORTAC R-070 to MALET INTL/ ORL 26.2 DME and hold.

ATIS 125.975	ORLANDO APP CON 135.3 351.9 (NORTH) 119.775 351.9 (SOUTH)	SANFORD TOWER* 120.3 (CTAF) 0 254.35	GND CON 121.35 254.35	CLNC DEL 123.975	CLNC DEL 121.35 (When twr closed)
------------------------	---	--	---------------------------------	----------------------------	--



ELEV 55	D TDZE 39
---------	------------------

CATEGORY	A	B	C	D
S-ILS 9R	239-½		200 (200-½)	
S-LOC 9R	540-½	501 (500-½)	540-1	501 (500-1)
C CIRCLING	580-1	525 (600-1)	600-1½ 545 (600-1½)	640-2 585 (600-2)
JOSKA FIX MINIMUMS (DME REQUIRED)				
S-LOC 9R	440-½	401 (400-½)	440-¾	401 (400-¾)
C CIRCLING	580-1	525 (600-1)	600-1½ 545 (600-1½)	640-2 585 (600-2)



SE-3, 23 JAN 2025 to 20 FEB 2025

SE-3, 23 JAN 2025 to 20 FEB 2025