

OXNARD, CALIFORNIA

ILS Y or LOC/DME Y RWY 21

LOC/DME I-RRG 109.3 Chan 30	APCH CRS 212°	Rwy ldg 11,102 TDZE 13 Arprt Elev 13
---	-------------------------	---

[USN]

POINT MUGU NAS
(NAVAL BASE VENTURA CO)(KNTD)

DME or RADAR required.

- ▼ * When ALS inop, increase vis to ¾ mile.
- ** When ALS inop, increase vis CAT AB to 1 mile, CAT CD vis to 1½ miles.
- *** Circling not authorized E of Rwy 3-21.

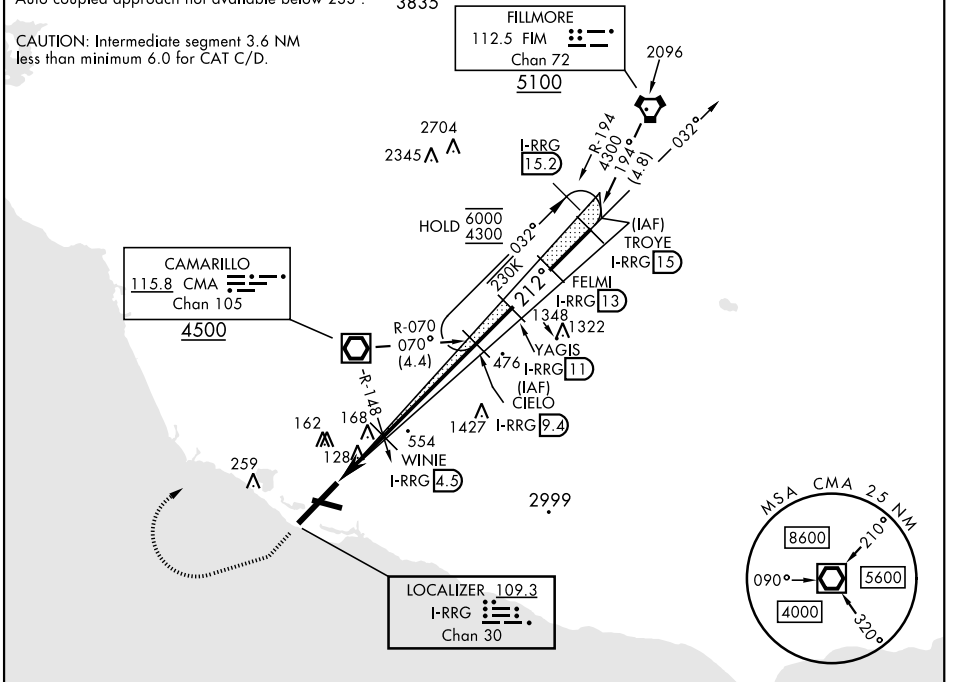


MISSED APPROACH: Climb to 500 via hdg 212°, then climbing right turn to 3000 via hdg 247°, then climbing right turn to 5000 direct CMA VOR/DME, then via CMA R-070 to CIELO and hold.

ATIS ★ 125.55 363.05	APP CON 128.65 307.275	TOWER ★ 124.85 290.375	GND CON 121.6 360.2	CLNC DEL 120.75 279.55	ASR/PAR
--------------------------------	----------------------------------	----------------------------------	-------------------------------	----------------------------------	---------

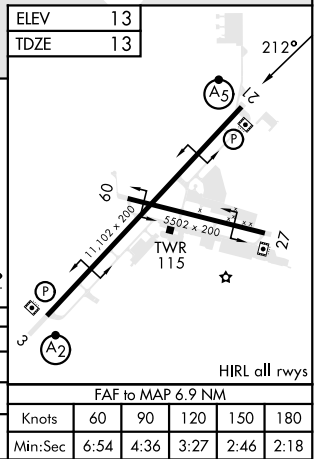
Auto coupled approach not available below 233'. 3835

CAUTION: Intermediate segment 3.6 NM less than minimum 6.0 for CAT C/D.



SW-3, 23 JAN 2025 to 20 FEB 2025

SW-3, 23 JAN 2025 to 20 FEB 2025



OXNARD, CALIFORNIA
Amdt 6 29DEC22

34°07'N-119°07'W

POINT MUGU NAS (KNTD)
(NAVAL BASE VENTURA CO)

ILS Y or LOC/DME Y RWY 21