

| | | |
|---|------------------------|---|
| LOC/DME I-EAU 109.5 Chan 32 | APP CRS 224° | Rwy Idg 7301 TDZE 913 Apt Elev 913 |
|---|------------------------|---|

ILS or LOC RWY 22

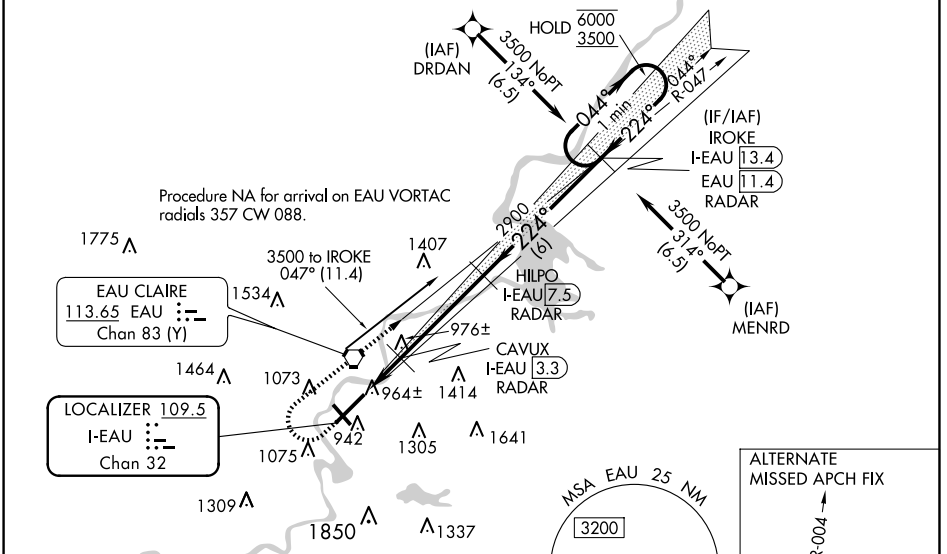
CHIPPEWA VALLEY RGNL (EAU)

From DRDAN and MENRD RNAV-1 GPS required.
DME or RADAR required.

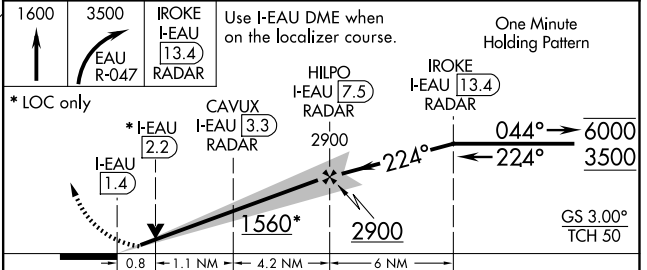
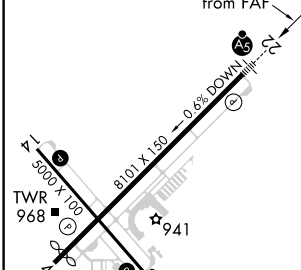
⚠ For inop ALS increase S-LOC 22 Cat C and D visibility to 7/8 SM. For inop ALS when using Rice Lake altimeter setting, increase S-ILS 22 all Cats visibility to 1 SM. When local altimeter setting not received, use Rice Lake altimeter setting and increase DA 110 feet and all MDA 120 feet, increase S-LOC 22 Cat C and D and Circling Cat C visibility 1/4 SM. VDP NA when using Rice Lake altimeter setting.

MALSR
35
MISSED APPROACH: Climb to 1600 then climbing right turn to 3500 on EAU VORTAC R-047 to IROKE/I-EAU LOC/DME 13.4 DME/RADAR and hold.

| | | | | |
|------------------------|--|---|---------------------------|-------------------------|
| ATIS 126.025 | MINNEAPOLIS CENTER 125.3 335.6 | EAU CLAIRE TOWER ★ 118.575 (CTAF) 0 | GND CON 120.925 | UNICOM 122.95 |
|------------------------|--|---|---------------------------|-------------------------|



| | | |
|-------------------|----------|----------|
| ELEV 913 | D | TDZE 913 |
| HIRL Rwy 4-22 | | |
| MIRL Rwy 14-32 | | |
| REIL Rwy 4 and 14 | | |



| | | | | |
|-------------------|-----------------------|-----------------------|-------------------------------|-------------------------|
| FAF to MAP 6.1 NM | | | | |
| Knots | 60 | 90 | 120 | 150 |
| Min:Sec | 6:06 | 4:04 | 3:03 | 2:26 |
| CIRCLING | 1480-1 567 (600-1) | 1540-1 627 (700-1) | 1660-2 1/4 747 (800-2 1/4) | 2200-3 1287 (1300-3) |

EC-3, 23 JAN 2025 to 20 FEB 2025

EC-3, 23 JAN 2025 to 20 FEB 2025