

APP CRS	Rwy Idg	8500
276°	TDZE	142
	Apt Elev	142

RNAV (RNP) Z RWY 28

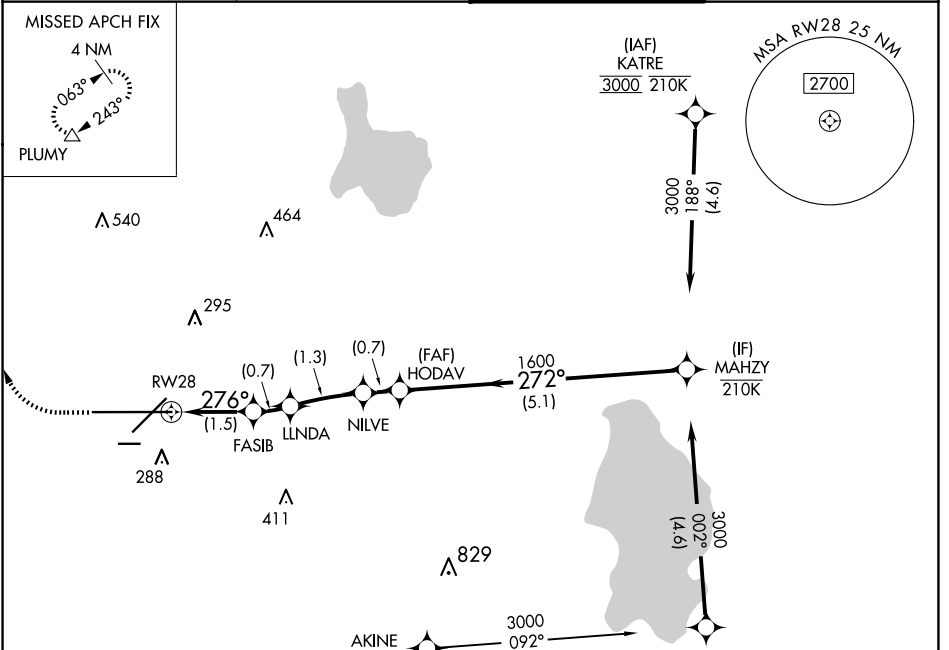
LAKELAND LINDER INTL (LAL)

RNP AR APCH - GPS.

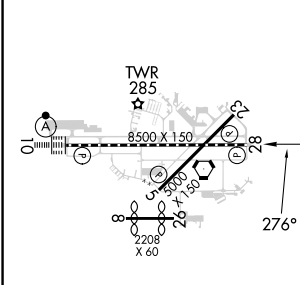
For uncompensated Baro-VNAV systems, procedure NA below -15°C or above 54°C.

MISSED APPROACH: Climb to 600 then climbing right turn to 2000 direct PLUMY and hold.

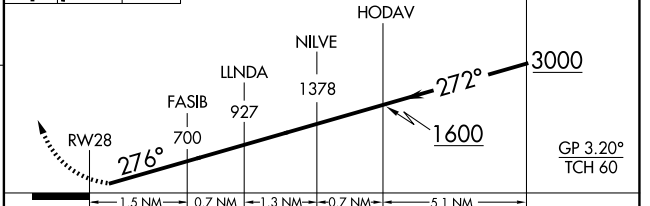
ATIS 118.025	TAMPA APP CON 120.65 290.3	LAKELAND TOWER 124.5 236.775	GND CON 121.4
-------------------------------	---	---	--------------------------------



ELEV 142	D	TDZE 142
----------	----------	----------



600 2000 PLUMY VGSi and RNAV glidepath not coincident (VGSi Angle 3.00/TCH 71).



CATEGORY	A	B	C	D
RNP 0.30 DA	507/55		365 (400-1)	

TDZ/CL Rwy 10
HIRL Rwys 5-23 and 10-28

AUTHORIZATION REQUIRED

SE-3, 23 JAN 2025 to 20 FEB 2025

SE-3, 23 JAN 2025 to 20 FEB 2025