

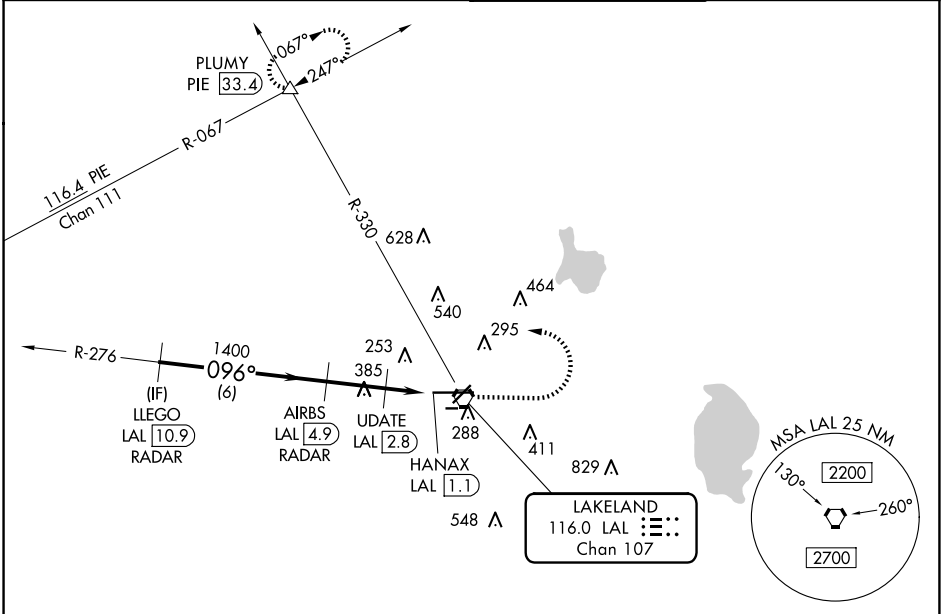
|   |                        |   |
|---|------------------------|---|
| VORTAC LAL<br><b>116.0</b><br>Chan <b>107</b> | APP CRS<br><b>096°</b> | Rwy Idg <b>8500</b><br>TDZE <b>132</b><br>Apt Elev <b>142</b> |
|---|------------------------|---|

# VOR RWY 10

LAKELAND LINDER INTL (LAL)

|   |  |            |   |
|---|--|------------|---|
| RADAR required for procedure entry. DME or RADAR required.  |  | ALSF-2<br> | MISSED APPROACH: Climb to 1000 then climbing left turn to 2000 on heading 294° and on LAL VORTAC R-330 to PLUMY INT/ PIE 33.4 DME and hold. |
| <p> Circling NA to Rwys 8 and 26. Circling Rwy 28 NA at night. For inop ALS, increase S-10 Cat C/D visibility to 1 1/2 SM; increase UDATE fix minimums S-10 Cat C/D visibility to RVR 6000.</p> |  |            |   |

|                        |                                      |  |                         |
|------------------------|--------------------------------------|--|-------------------------|
| ATIS<br><b>118.025</b> | TAMPA APP CON<br><b>120.65 290.3</b> | LAKELAND TOWER<br><b>124.5 236.775</b> | GND CON<br><b>121.4</b> |
|------------------------|--------------------------------------|--|-------------------------|



SE-3, 23 JAN 2025 to 20 FEB 2025

SE-3, 23 JAN 2025 to 20 FEB 2025

|   |        |               |           |
|---|--------|---------------|-----------|
| ELEV 142  |        | TDZE 132      |           |
| <p>△ 1667</p> <p>LLEGO LAL 10.9 RADAR</p> <p>AIRBS LAL 4.9 RADAR</p> <p>UPDATE LAL 2.8</p> <p>HANAX LAL 1.1</p> <p>LAKELAND LAL 1.1</p> <p>PLUMY LAL R-330</p> <p>VGSI and descent angles not coincident (VGSI Angle 3.00/TCH 71).</p> <p>2000 → 1000</p> <p>hdg 294°</p> <p>096°</p> <p>2.98° TCH 52</p> <p>6 NM</p> <p>2.1 NM</p> <p>0.7</p> <p>1.1</p> |        |               |           |
| CATEGORY  | A      | B             | C         |
| S-10  | 700/24 | 568 (600-1/2) | 700-1 1/4 |
| CIRCLING  | 700-1  | 558 (600-1)   | 720-1 1/2 |
| UPDATE FIX MINIMUMS   |        |               |           |
| S-10  | 540/24 | 408 (400-1/2) | 540/40    |
| CIRCLING  | 600-1  | 660-1         | 720-1 1/2 |
| <p>TDZ/CL Rwy 10</p> <p>HIRL Rwys 5-23 and 10-28</p> <p>FAF to MAP 3.8 NM</p> <p>Knots: 60 90 120 150 180</p> <p>Min:Seq 3:48 2:32 1:54 1:31 1:16</p>   |        |               |           |