

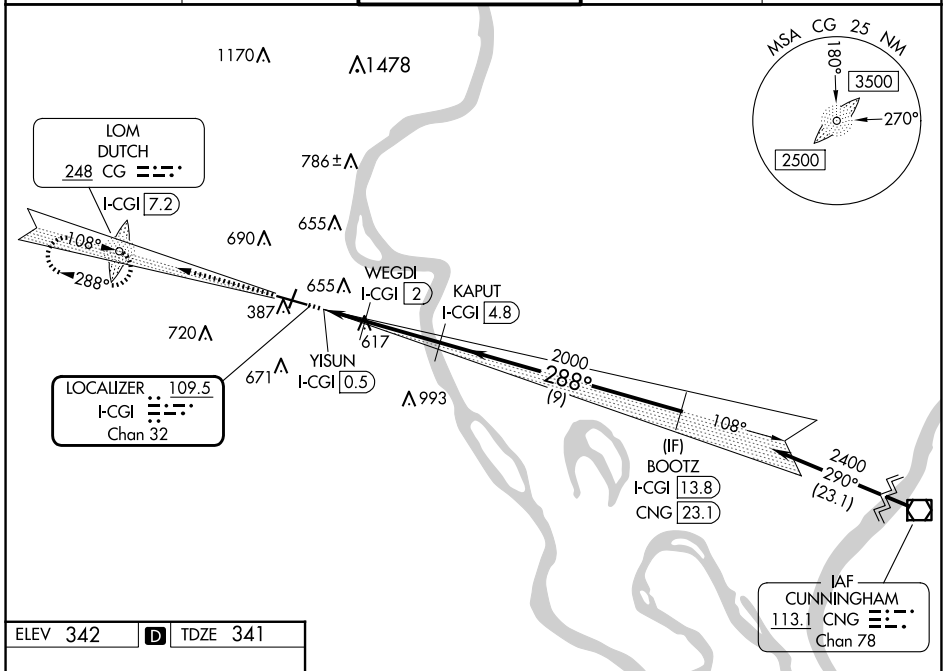
LOC/DME I-CGI <b>109.5</b> Chan <b>32</b>	APP CRS <b>288°</b>	Rwy Idg TDZE <b>341</b> Apt Elev <b>342</b>
---	------------------------	---

# LOC BC RWY 28

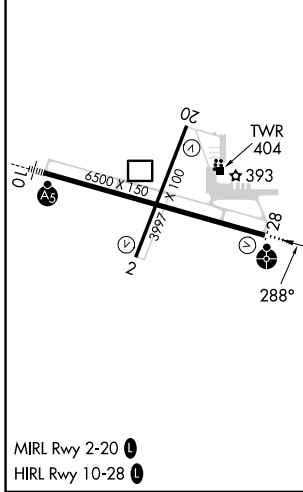
CAPE GIRARDEAU RGNL (CGI)

DME required.		ODALS	MISSED APPROACH: Climb to 2400 on I-CGI west course (288°) to DUTCH LOM/I-CGI 7.2 DME and hold.
▼ ▲ Rwy 28 helicopter visibility reduction below ¼ SM NA.		☉	

ASOS <b>120.55</b>	MEMPHIS CENTER <b>133.65 292.15</b>	CAPE GIRARDEAU TOWER * <b>125.525</b> (CTAF) <b>0</b>	GND CON <b>124.7</b>	UNICOM <b>122.95</b>
-----------------------	--	--	-------------------------	-------------------------

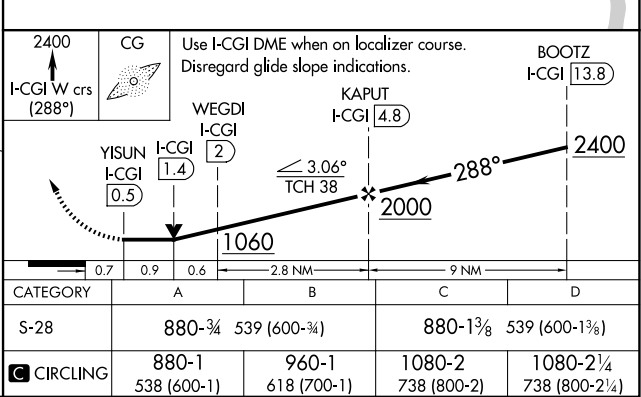


ELEV 342	D	TDZE 341
----------	---	----------



Procedure NA for arrival on CNG VOR/DME airway radials 240 CW 346.

## BACK COURSE



NC-3, 23 JAN 2025 to 20 FEB 2025

NC-3, 23 JAN 2025 to 20 FEB 2025