


LOC/DME I-SP 108.3 Chan 20	APP CRS 059°	Rwy Idg TDZE Apt Elev	7006 94 99
-----------------------------------------	------------------------	-----------------------------	---------------------------------------

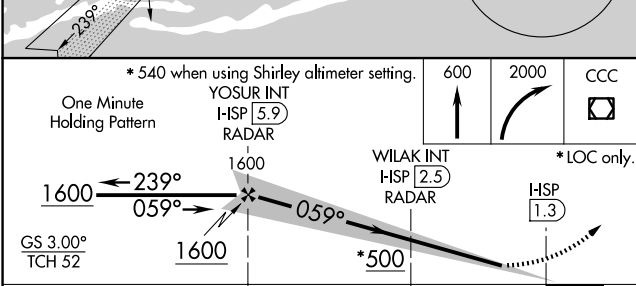
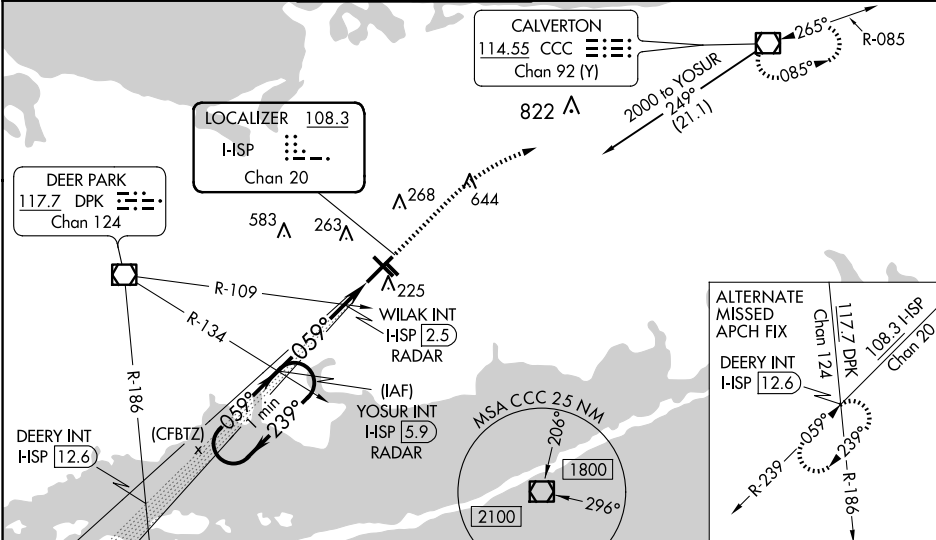
ILS or LOC RWY 6

LONG ISLAND MAC ARTHUR (ISP)

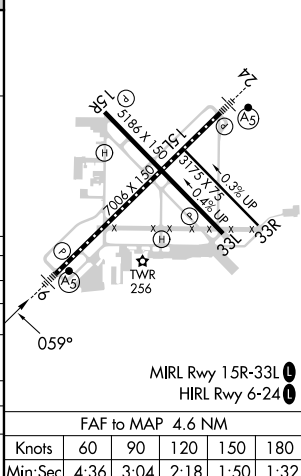
⚠ When local altimeter setting not received, use Shirley altimeter setting and increase all DA 28 feet and all MDA 40 feet, increase S-LOC 6 Cat C and D visibility to RVR 4500 and Circling Cat C and D visibility 1/4 mile. Increase WILAK fix minimums S-LOC 6 Cat C and D visibility to RVR 3500. For inoperative MALSR, increase S-LOC 6 Cat C and D visibility to RVR 6000. Increase WILAK fix minimums S-LOC 6 Cats C and D visibility to RVR 5500.
**** RVR 1800 authorized with use of FD or AP or HUD to DA, NA when using Shirley altimeter setting.**

MALSR

MISSED APPROACH:
 Climb to 600 then climbing right turn to 2000 direct CCC VOR/DME and hold.

ATIS 120.725	NEW YORK APP CON 120.05 343.75	LONG ISLAND TOWER* 119.3 (CTAF) 335.5	GND CON 135.3	CLNC DEL 121.85	UNICOM 122.95
------------------------	------------------------------------------	--------------------------------------------------------	-------------------------	---------------------------	-------------------------



ELEV 99	D	TDZE 94
---------	----------	---------



CATEGORY	A	B	C	D
S-ILS 6	** 294/24 200 (200-1/2)			
S-LOC 6	500/24	406 (500-1/2)	500/40	406 (500-3/4)
C CIRCLING	600-1 501 (600-1)	660-1 561 (600-1)	660-1 1/2 561 (600-1 1/2)	960-2 3/4 861 (900-2 3/4)
WILAK FIX MINIMUMS (DUAL VOR RECEIVERS OR DME REQUIRED)				
S-LOC 6	440/24	346 (400-1/2)	440/30	346 (400-3/8)
C CIRCLING	600-1 501 (600-1)	660-1 561 (600-1)	660-1 1/2 561 (600-1 1/2)	960-2 3/4 861 (900-2 3/4)

FAF to MAP 4.6 NM					
Knots	60	90	120	150	180
Min:Sec	4:36	3:04	2:18	1:50	1:32

NE-2, 23 JAN 2025 to 20 FEB 2025

NE-2, 23 JAN 2025 to 20 FEB 2025