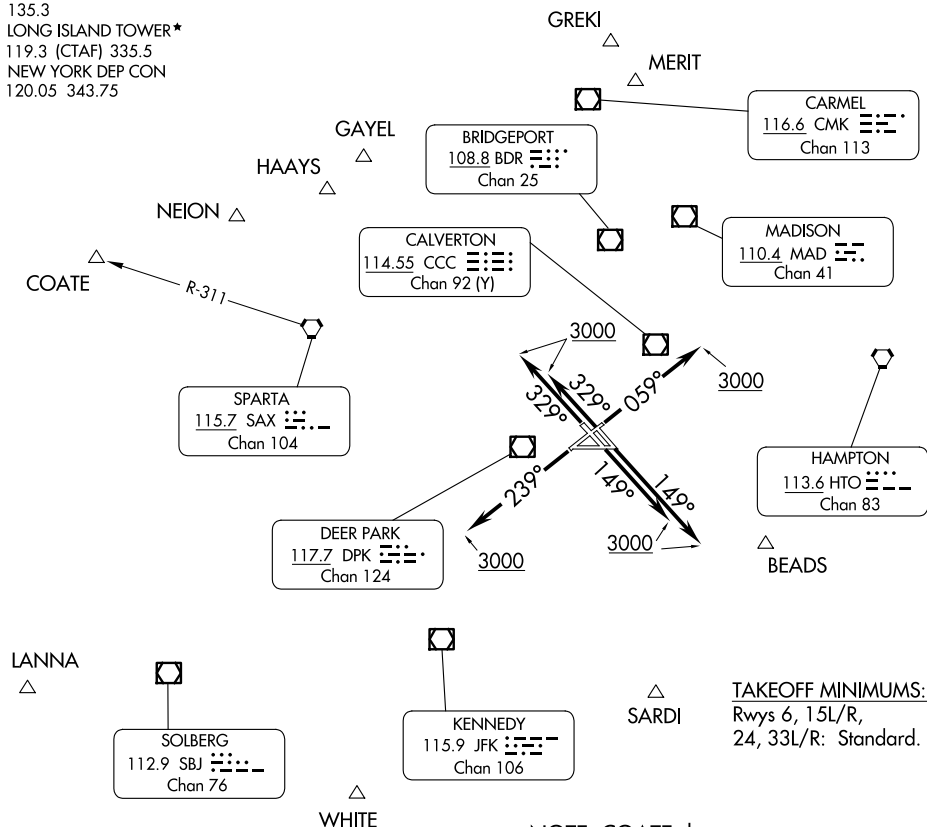


# LONG ISLAND SEVEN DEPARTURE

ATIS 120.725  
CLNC DEL  
121.85  
GND CON  
135.3  
LONG ISLAND TOWER\*  
119.3 (CTAF) 335.5  
NEW YORK DEP CON  
120.05 343.75

**TOP ALTITUDE:  
3000**



**TAKEOFF MINIMUMS:**  
Rwys 6, 15L/R,  
24, 33L/R: Standard.

NOTE: COATE departures expect vectors to SAX VORTAC or SAX R-311.

NOTE: Chart not to scale.

## DEPARTURE ROUTE DESCRIPTION

- TAKEOFF RUNWAY 6: Climb heading 059° to 3000, thence....
- TAKEOFF RUNWAYS 15L/15R: Climb heading 149° to 3000, thence....
- TAKEOFF RUNWAY 24: Climb heading 239° to 3000, thence....
- TAKEOFF RUNWAYS 33L/33R: Climb heading 329° to 3000, thence....

....on vectors to assigned route/fix. Maintain 3000, expect clearance to filed altitude/flight level 10 minutes after departure.

# LONG ISLAND SEVEN DEPARTURE

NE-2, 23 JAN 2025 to 20 FEB 2025

NE-2, 23 JAN 2025 to 20 FEB 2025