

EASTOVER, SOUTH CAROLINA

# TACAN RWY 14

VORTAC MMT <b>113.2</b> Chan <b>79</b>	APCH CRS <b>132°</b>	Rwy Idg TDZE <b>251</b> Arprt Elev <b>254</b>	<b>9012</b>
--	-------------------------	---	-------------

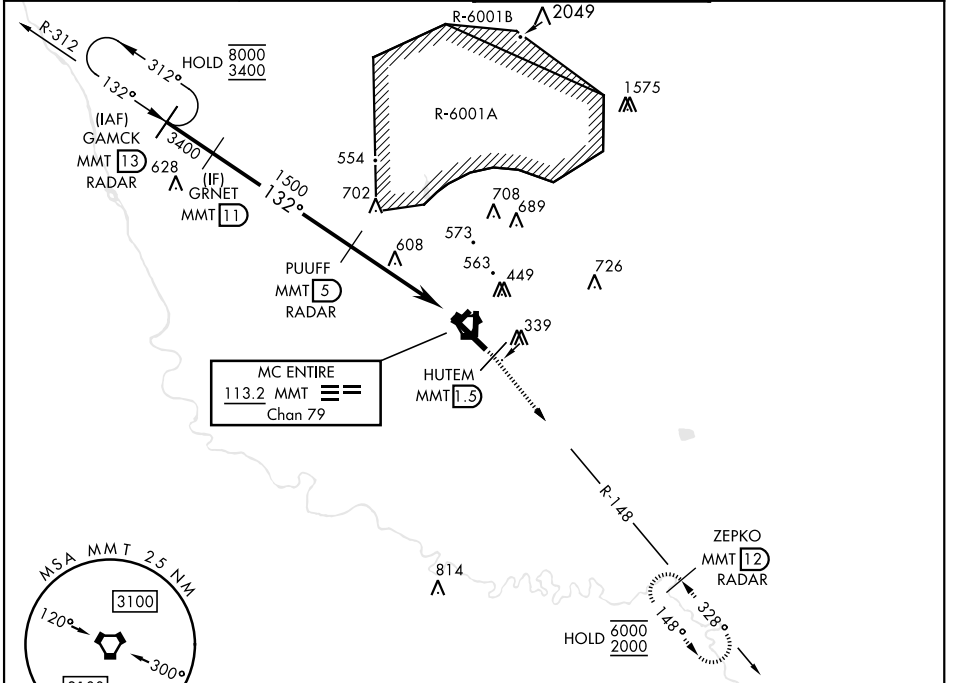
[USAF]

MC ENTIRE JNGB (KMMT)

**\* Circling to Rwy 05H-23H not authorized at night.**

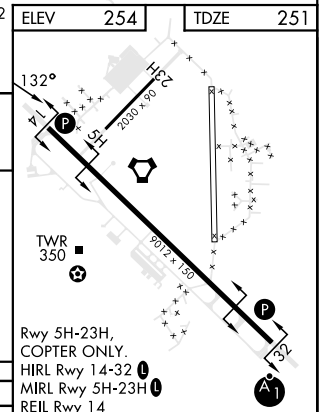
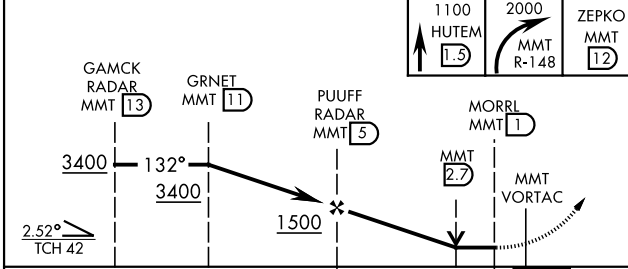
MISSED APPROACH: Climb to 1100 direct HUTEM/1.5 DME then climbing right turn to 2000 intercept MMT R-148 direct ZEPKO/12 DME and hold.

ATIS ★ <b>327.05</b>	SHAW APP CON <b>125.4 318.1</b>	TOWER ★ <b>132.4 (CTAF) 253.5</b>	GND CON <b>127.625 226.675</b>
-------------------------	------------------------------------	--------------------------------------	-----------------------------------



ELEV	254	TDZE	251
------	-----	------	-----

EMERG SAFE ALT 100 NM 3800



CATEGORY	A	B	C	D	E	
S-14	880-1	629 (700-1)	880-1 $\frac{3}{4}$	629 (700-1 $\frac{3}{4}$ )		
CIRCLING*	880-1	626 (700-1)	880-1 $\frac{3}{4}$	1020-2 $\frac{1}{2}$	1020-2 $\frac{3}{4}$	
FAF to MAP 4.0 NM						
Knots		60	90	120	150	180
Min:Sec		4:00	2:40	2:00	1:36	1:20

EASTOVER, SOUTH CAROLINA

33°55'N-80°48'W

MC ENTIRE JNGB (KMMT)

Amdt 1 25MAY17

# TACAN RWY 14

SE-2, 23 JAN 2025 to 20 FEB 2025

SE-2, 23 JAN 2025 to 20 FEB 2025