

LOS ALAMITOS, CALIFORNIA

RNAV (GPS) RWY 22L

APCH CRS	Rwy Idg	8001
223°	TDZE	36
	Arpt Elev	36

-(USA)

LOS ALAMITOS AAF (KSLI)

RNP APCH- GPS

▼ * When ALS inop, increase CAT CD vis to 1 1/8 miles.
 ** When ALS inop, using John Wayne/Orange County altimeter setting, increase CAT CD vis to 1 1/4 miles.

SALS MISSED APPROACH: Climb to 600 then climbing left turn to 2100 direct ALBAS and hold.

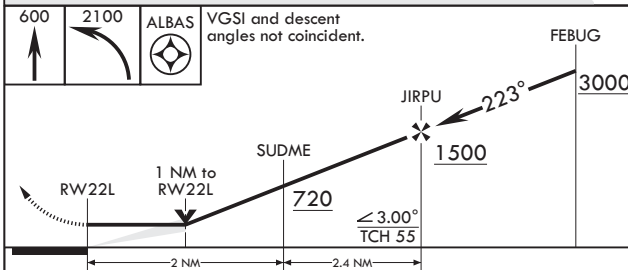
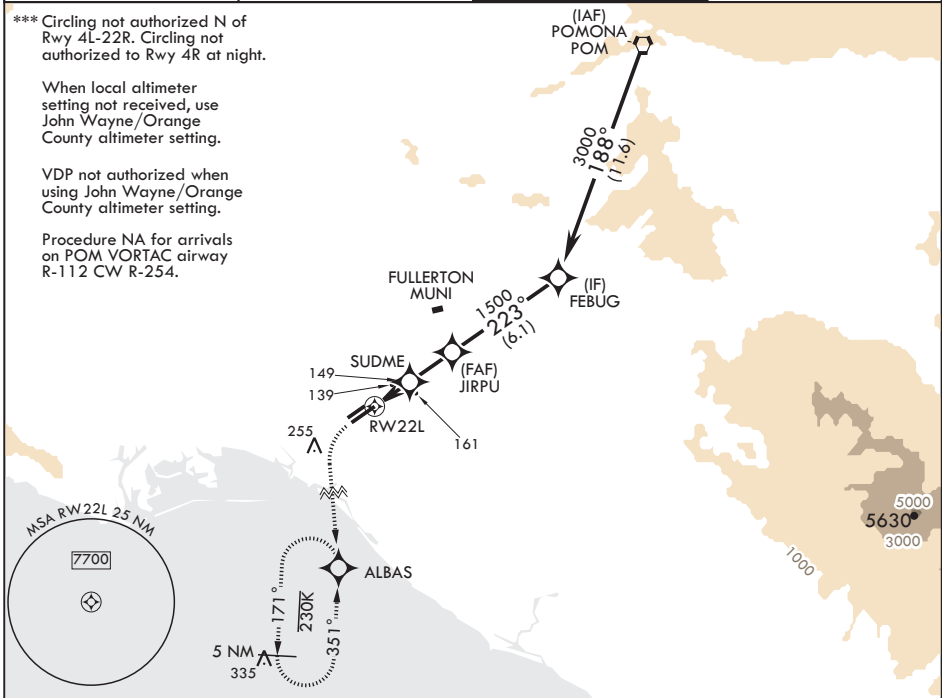
ATIS*	SOCAL APP CON/DEP CON	TOWER*	GND CON
118.875 379.975	125.35 316.125	123.85 (CTAF) 251.15	126.95 257.95

*** Circling not authorized N of Rwy 4L-22R. Circling not authorized to Rwy 4R at night.

When local altimeter setting not received, use John Wayne/Orange County altimeter setting.

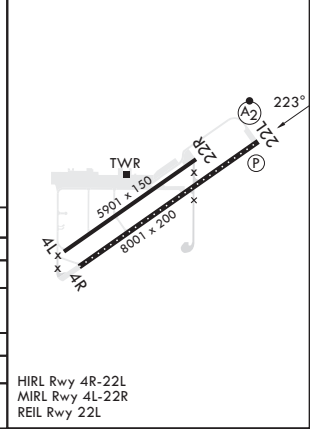
VDP not authorized when using John Wayne/Orange County altimeter setting.

Procedure NA for arrivals on POM VORTAC airway R-112 CW R-254.



ELEV 36	TDZE 36
---------	---------

CATEGORY	A	B	C	D
LNAV MDA*	420-1	384	(400-1)	
CIRCLING***	440-1 404 (500-1)	500-1 464 (500-1)	600-1½ 564 (600-1½)	600-2 564 (600-2)
JOHN WAYNE/ORANGE COUNTY ALTIMETER SETTING MINIMUMS				
LNAV MDA**	460-1	424	(500-1)	
CIRCLING***	480-1 444 (500-1)	540-1 504 (600-1)	640-1¼ 604 (700-1¼)	640-2 604 (700-2)



HIRL Rwy 4R-22L
MIRL Rwy 4L-22R
REIL Rwy 22L

LOS ALAMITOS, CALIFORNIA

33°47'N - 118°03'W

LOS ALAMITOS AAF (KSLI)

Amdt 2 11JUL24

RNAV (GPS) RWY 22L

SW-3, 23 JAN 2025 to 20 FEB 2025

SW-3, 23 JAN 2025 to 20 FEB 2025