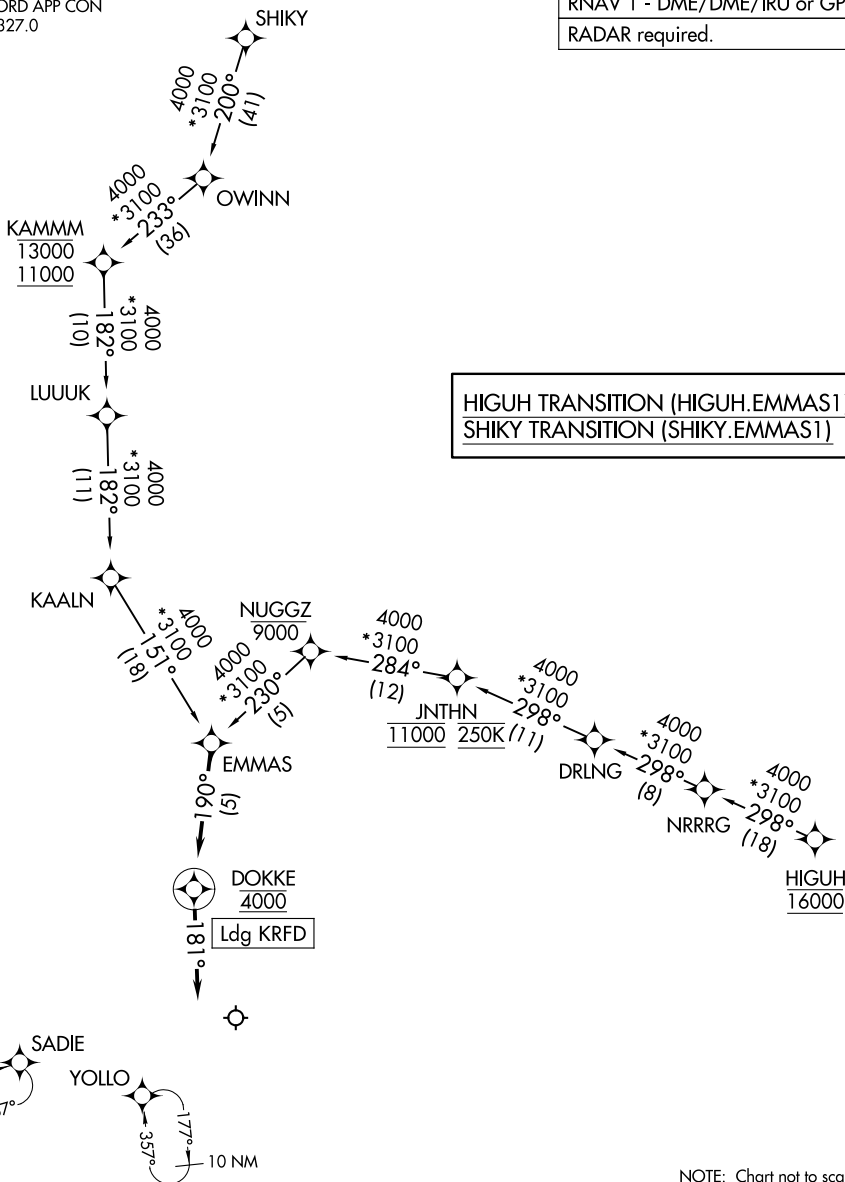


EMMAS ONE ARRIVAL (RNAV)

ROCKFORD APP CON
121.0 327.0
ATIS
127.6

RNAV 1 - DME/DME/IRU or GPS.

RADAR required.



HIGUH TRANSITION (HIGUH.EMMAS1)
SHIKY TRANSITION (SHIKY.EMMAS1)

EC-3, 23 JAN 2025 to 20 FEB 2025

EC-3, 23 JAN 2025 to 20 FEB 2025

Ldg KRFD

NOTE: Chart not to scale.

ARRIVAL ROUTE DESCRIPTION

From EMMAS on track 190° to cross DOKKE at 4000, then on track 181°. Expect RADAR vectors to final approach course.