

MARIETTA, GEORGIA


TACAN RWY 29

TACAN Chan 77	APCH CRS 291°	Rwy Idg 10,002
		TDZE 1014
		Arpt Elev 1069

[USAF]

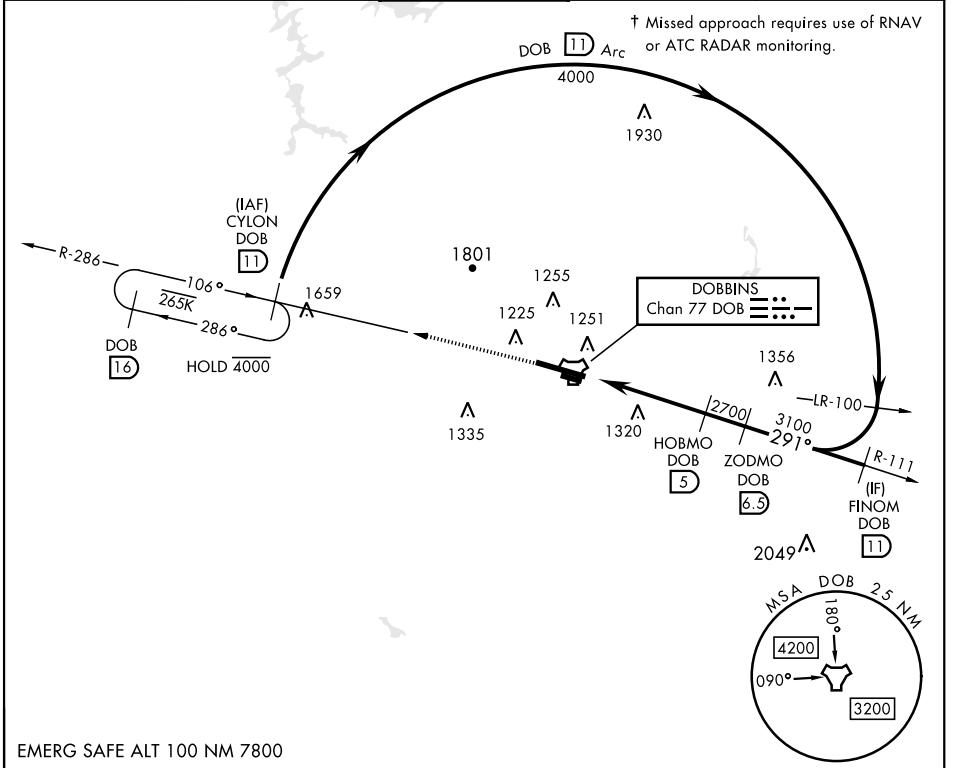
DOBBINS ARB (KMGE)

▼ * When ALS inop, increase CAT AB RVR to 55 and vis to 1 mile, CAT CDE vis to 2 miles.
 ** Circling not authorized N of Rwy 11-29 for CAT DE aircraft. Circling to assault strip not authorized.

SALSF 

† MISSED APPROACH: Climb to 3000 on DOB TACAN R-286 to CYLON and hold.

ATIS ★ 269.5	ATLANTA APP CON 121.0 268.7	TOWER ★ 120.75 370.875	GND CON 125.3 275.8	ASR
------------------------	---------------------------------------	----------------------------------	-------------------------------	-----



SE-4, 23 JAN 2025 to 20 FEB 2025

SE-4, 23 JAN 2025 to 20 FEB 2025

EMERG SAFE ALT 100 NM 7800

3000 DOB R-286	CYLON DOB 11	VGSI and descent angles not coincident. (VGSI Angle 3.00)	ELEV 1069	TDZE 1014
----------------	--------------	---	-----------	-----------

ACUVI 0.9, TCH 58, 3.37°, 291°, 4000, 4000, 2700, 3100, 11 Arc

CATEGORY	A	B	C	D	E
S-29 *	1720/40 706 (700-¾)		1720-1¼ 706 (700-1¾)		
CIRCLING **	1720-1 651 (700-1)		1760-2 691 (700-2)	1760-2¼ 691 (700-2¼)	1760-2½ 691 (700-2½)

HIRL Rwy 11-29
REL Rwy 11 and 29

MARIETTA, GEORGIA

33°55'N-84°31'W

DOBBINS ARB (KMGE)

Amdt 8 11JUL24

TACAN RWY 29