

LOC I-OFK 111.5	APP CRS 014°	Rwy Idg 5801
		TDZE 1573
		Apt Elev 1573

ILS or LOC RWY 2

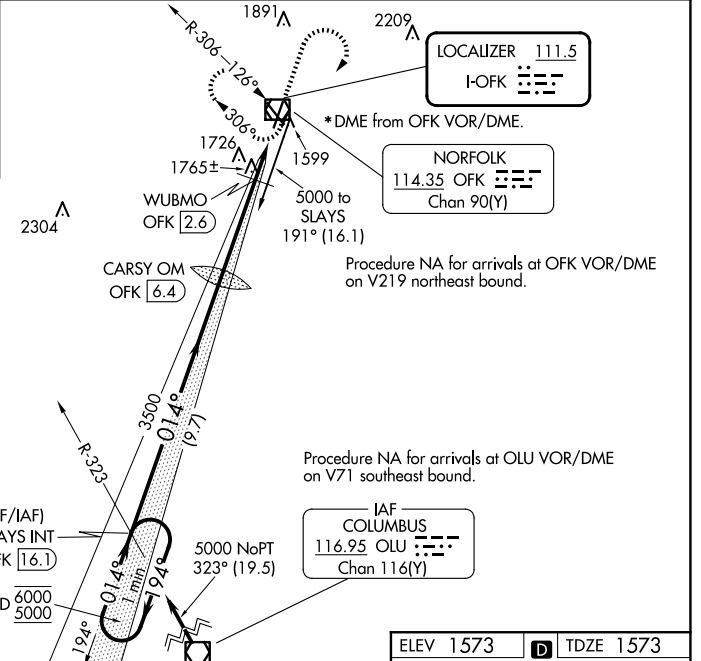
NORFOLK RGNL/KARL STEFAN MEML FLD (OFK)

<p>⚠ For inop ALS, increase S-LOC 2 Cat C/D visibility to 1½ SM.</p>	<p>MALSRL</p>	<p>MISSED APPROACH: Climb to 3000 then climbing right turn to 4000 direct OFK VOR/DME and hold.</p>
-----------------------------------------------------------------------------	---------------	-----------------------------------------------------------------------------------------------------

ASOS 119.025	MINNEAPOLIS CENTER 125.025 235.625	UNICOM 122.7 (CTAF) 0
------------------------	----------------------------------------------	---------------------------------

ALTERNATE MISSED APCH FIX

COLUMBUS
OLU
116.95
Chan 116(Y)



2704 Δ

3204 Δ

MSA OFK 25 NM

(IF/IAF) SLAYS INT OFK 16.1

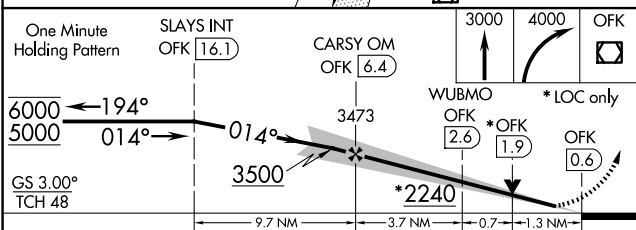
HOLD 6000/5000

WUBMO OFK 2.6

CARSY OM OFK 6.4

5000 NoPT 323° (19.5)

IAF COLUMBUS 116.95 OLU Chan 116(Y)



ELEV 1573 TDZE 1573

HIRL Rwy 2-20

MIRL Rwy 14-32

REIL Rwy 20 and 32

FAF to MAP 5.7 NM

Knots	60	90	120	150	180
Min:Sec	5:42	3:48	2:51	2:17	1:54

CATEGORY	A	B	C	D
S-ILS 2	1773-½ 200 (200-½)			
S-LOC 2	2240-½	667 (700-½)	2240-1½	667 (700-1½)
C CIRCLING	2240-1	667 (700-1)	2260-2	2360-2½
			687 (700-2)	787 (800-2½)
WUBMO FIX MINIMUMS (DME REQUIRED)				
S-LOC 2	2020-½	447 (500-½)	2020-¾	447 (500-¾)
C CIRCLING	2080-1	2100-1	2260-2	2360-2½
	507 (600-1)	527 (600-1)	687 (700-2)	787 (800-2½)

ILS or LOC RWY 2

NC-2, 23 JAN 2025 to 20 FEB 2025

NC-2, 23 JAN 2025 to 20 FEB 2025