

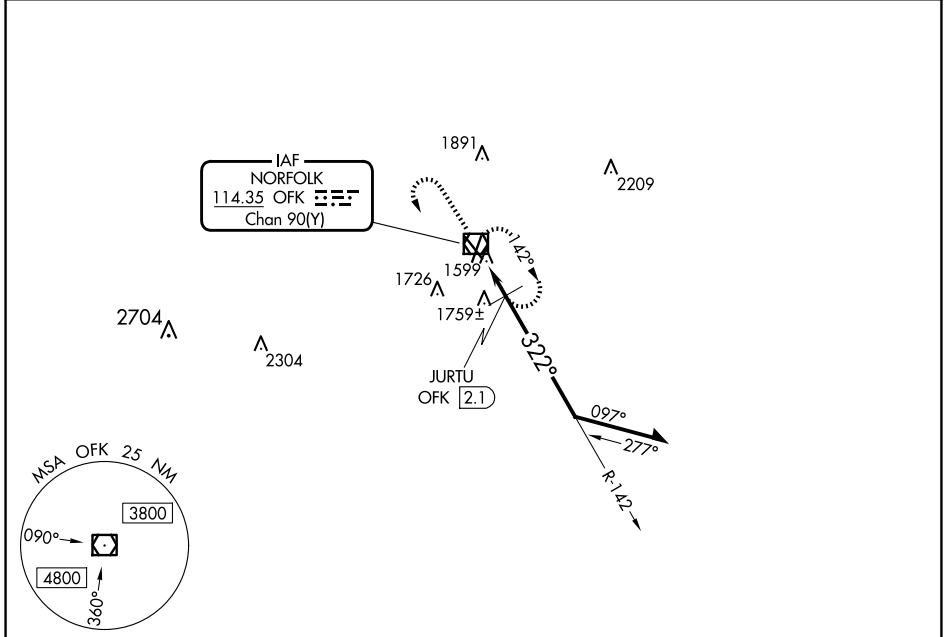
VOR/DME OFK <b>114.35</b> Chan <b>90(Y)</b>	APP CRS <b>322°</b>	Rwy Idg TDZE Apt Elev	<b>5160</b> <b>1560</b> <b>1573</b>
---	------------------------	-----------------------------	---

# VOR RWY 32

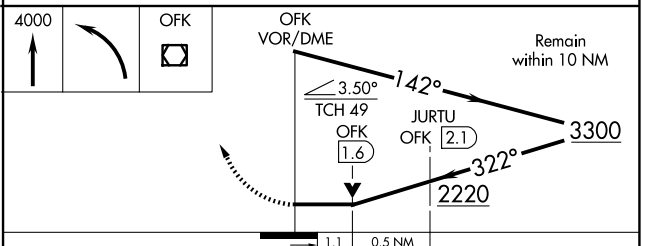
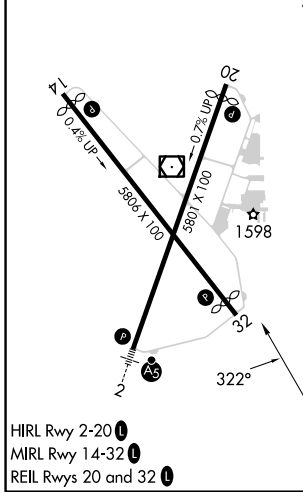
NORFOLK RGNL/KARL STEFAN MEML FLD (OFK)

<p><b>V</b> Rwy 32 helicopter visibility reduction below ¼ SM NA.</p>	<p>MISSED APPROACH: Climb to 4000 then left turn direct OFK VOR/DME and hold.</p>
---	---

ASOS <b>119.025</b>	MINNEAPOLIS CENTER <b>125.025 235.625</b>	UNICOM <b>122.7 (CTAF) 0</b>
------------------------	--	---------------------------------



ELEV 1573	<b>D</b>	TDZE 1560
-----------	----------	-----------



CATEGORY	A	B	C	D
S-32	2220-1	660 (700-1)	2220-1 $\frac{7}{8}$	660 (700-1 $\frac{7}{8}$ )
<b>C</b> CIRCLING	2220-1	647 (700-1)	2260-2	2360-2 $\frac{1}{2}$ 787 (800-2 $\frac{1}{2}$ )
JURTU FIX MINIMUMS (DME REQUIRED)				
S-32	2020-1	460 (500-1)	2020-1 $\frac{3}{8}$	460 (500-1 $\frac{3}{8}$ )
<b>C</b> CIRCLING	2060-1	2100-1	2260-2	2360-2 $\frac{1}{2}$ 487 (500-1) 527 (600-1) 687 (700-2) 787 (800-2 $\frac{1}{2}$ )

NC-2, 23 JAN 2025 to 20 FEB 2025

NC-2, 23 JAN 2025 to 20 FEB 2025