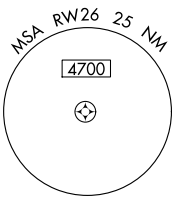


WAAS CH 42835	APP CRS 259°	Rwy Idg TDZE Apt Elev	5791 1159 1188
W26A			

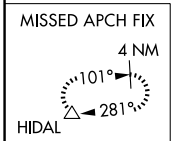
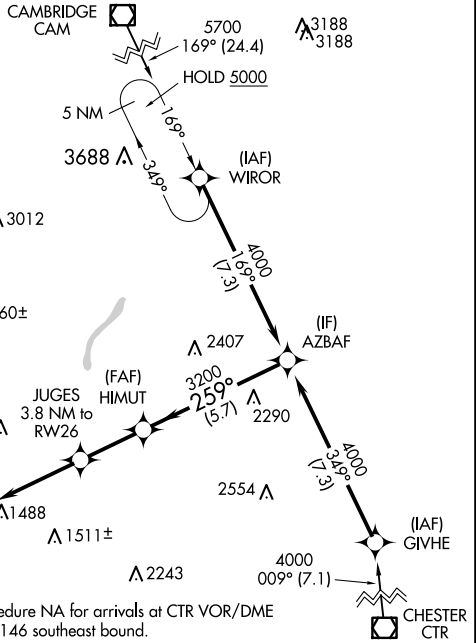
RNAV (GPS) RWY 26

PITTSFIELD MUNI (PSF)

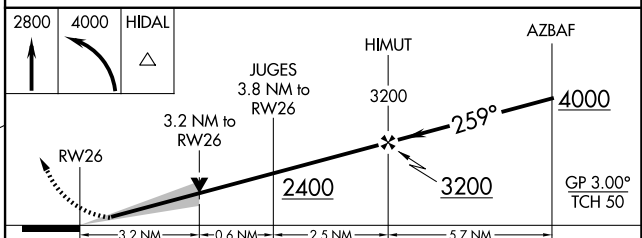
RNP APCH - GPS.		MISSED APPROACH: Climb to 2800 then climbing left turn to 4000 direct HIDAL and hold.	
<p>▼ Circling NA south of Rwy 8 and southwest of Rwy 32.</p> <p>▲ For uncompensated Baro-VNAV systems, LNAV/VNAV NA below -21°C or above 54°C.</p> <p>❄ -21°C</p>		<p>* Missed approach requires minimum climb of 285 feet per NM to 2700.</p>	
ASOS 135.375	ALBANY APP CON 132.825 307.2	CLNC DEL 128.6	UNICOM 122.7 (CTAF) 0



Procedure NA for arrival on CAM VOR/DME
airway radials 108 CW 248.



ELEV 1188	TDZE 1159
-----------	-----------



CATEGORY	A	B	C	D
LPV DA*		1409-1	250 (300-1)	
LPV DA		1678-1 $\frac{3}{8}$	519 (500-1 $\frac{3}{8}$)	
LNAV/VNAV DA		1911-2	752 (800-2)	
LNAV MDA	2220-1 $\frac{1}{4}$ 1061 (1100-1 $\frac{1}{2}$)	2220-1 $\frac{1}{2}$ 1061 (1100-1 $\frac{1}{2}$)	2220-3	1061 (1100-3)
CIRCLING	2220-1 $\frac{1}{4}$ 1032 (1100-1 $\frac{1}{4}$)	2220-1 $\frac{1}{2}$ 1032 (1100-1 $\frac{1}{2}$)	2400-3 1212 (1300-3)	2680-3 1492 (1500-3)

REIL Rwy 26 0
MIRL Rwy 8-26 and 14-32 0

NE-1, 23 JAN 2025 to 20 FEB 2025

NE-1, 23 JAN 2025 to 20 FEB 2025