

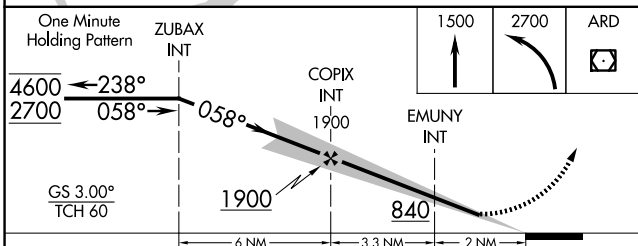
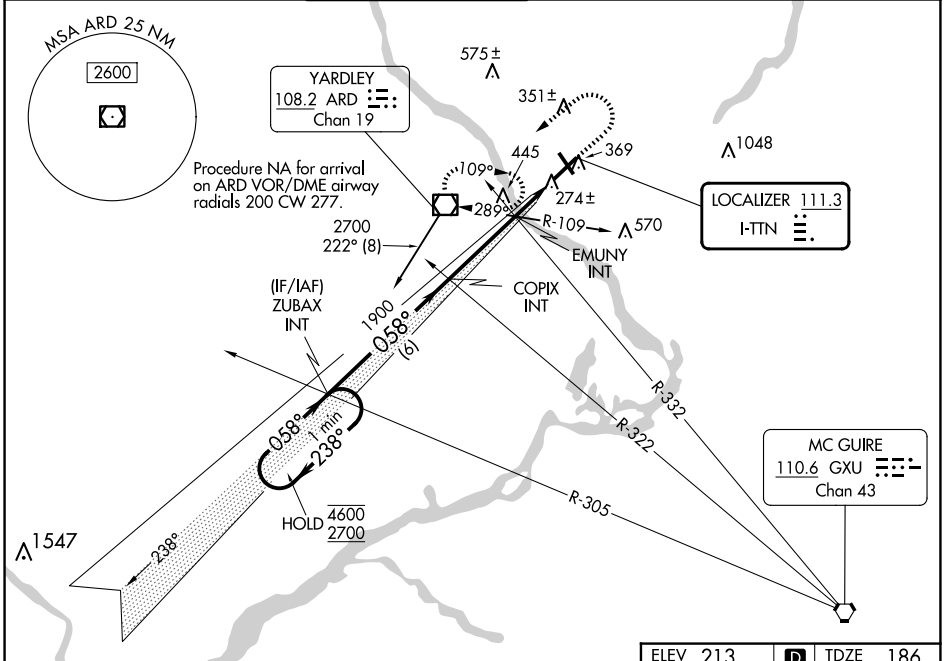
LOC I-TTN 111.3	APP CRS 058°	Rwy Idg TDZE Apt Elev	6006 186 213
---------------------------	------------------------	-----------------------------	---

ILS or LOC RWY 6

TRENTON MERCER (TTN)

<p>▼ When Circling to Rwy 34 at night, operational VGSI required, remain on or above VGSI glidepath until threshold. For inop ALS, increase EMUNY fix minimums S-LOC 6 Cat C/D visibility to 1 SM.</p> <p>▲ MALSR</p>	<p>MISSED APPROACH: Climb to 1500 then climbing left turn to 2700 direct ARD VOR/DME and hold.</p>
---	--

ATIS 126.775	PHILADELPHIA APP CON 123.8 291.7	TRENTON TOWER ★ 120.7 (CTAF) 257.8	GND CON 121.9 257.8	CLNC DEL 121.9 257.8	UNICOM 122.95
------------------------	--	--	-------------------------------	--------------------------------	-------------------------



CATEGORY	A	B	C	D
S-ILS 6	414-½ 228 (300-½)			
S-LOC 6	840-½ 654 (700-½)	840-1¾ 654 (700-1¾)		
C CIRCLING	840-1 627 (700-1)	840-1¾ 627 (700-1¾)	960-2½ 747 (800-2½)	
EMUNY FIX MINIMUMS (DUAL VOR RECEIVERS REQUIRED)				
S-LOC 6	540-½ 354 (400-½)	540-5/8 354 (400-5/8)		
C CIRCLING	680-1 467 (500-1)	760-1½ 547 (600-1½)	960-2½ 747 (800-2½)	

ELEV 213 TDZE 186

TWR 276

HIRL Rwys 6-24 and 16-34

REIL Rwys 16, 24 and 34

FAF to MAP 5.3 NM

Knots	60	90	120	150	180
Min:Sec	5:18	3:32	2:39	2:07	1:46

NE-2, 23 JAN 2025 to 20 FEB 2025

NE-2, 23 JAN 2025 to 20 FEB 2025