

WAAS CH 40230 W34A	APP CRS 338°	Rwy Idg TDZE Apl Elev	4800 202 213
--	------------------------	-----------------------------	---

RNAV (GPS) RWY 34

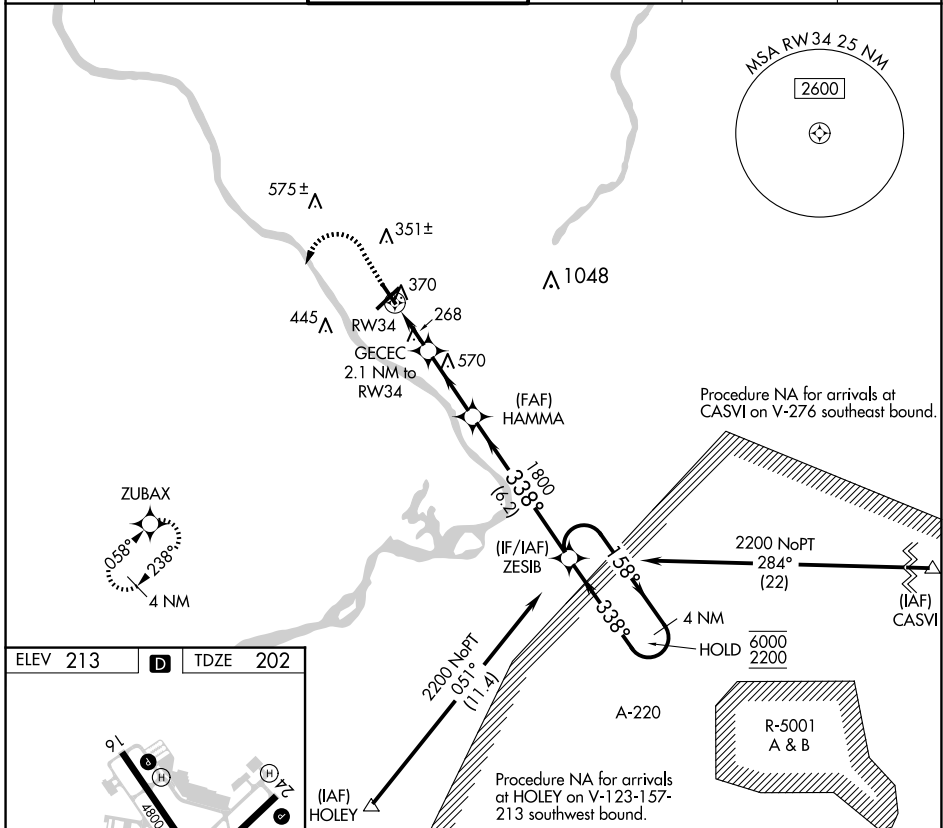
TRENTON MERCER (TTN)

RNP APCH.

▼ Rwy 34 helicopter visibility reduction below 1 SM NA. Straight-in Rwy 34 at night, operational VGSi required, remain on or above VGSi glidepath until threshold. When Circling to Rwy 34 at night, operational VGSi required, remain on or above VGSi glidepath until threshold.

MISSED APPROACH:
(Do not exceed 250K until ZUBAX)
Climb to 700 then climbing left turn to 2700 direct ZUBAX and hold.

ATIS 126.775	PHILADELPHIA APP CON 123.8 291.7	TRENTON TOWER ★ 120.7 (CTAF) 0 257.8	GND CON 121.9 257.8	CLNC DEL 121.9 257.8	UNICOM 122.95
------------------------	--	--	-------------------------------	--------------------------------	-------------------------



ELEV 213	D	TDZE 202																									
700	2700	ZUBAX																									
<table border="1"> <tr> <th>CATEGORY</th> <th>A</th> <th>B</th> <th>C</th> <th>D</th> </tr> <tr> <td>LP MDA</td> <td colspan="4">520-1 318 (400-1)</td> </tr> <tr> <td>LNAV MDA</td> <td>620-1</td> <td>418 (500-1)</td> <td>620-1³/₈</td> <td>418 (500-1³/₈)</td> </tr> <tr> <td rowspan="2">CIRCLING</td> <td>680-1</td> <td>467 (500-1)</td> <td>760-1¹/₂</td> <td>960-2¹/₂</td> </tr> <tr> <td></td> <td></td> <td>547 (600-1¹/₂)</td> <td>747 (800-2¹/₂)</td> </tr> </table>	CATEGORY	A	B	C	D	LP MDA	520-1 318 (400-1)				LNAV MDA	620-1	418 (500-1)	620-1 ³ / ₈	418 (500-1 ³ / ₈)	CIRCLING	680-1	467 (500-1)	760-1 ¹ / ₂	960-2 ¹ / ₂			547 (600-1 ¹ / ₂)	747 (800-2 ¹ / ₂)			
CATEGORY	A	B	C	D																							
LP MDA	520-1 318 (400-1)																										
LNAV MDA	620-1	418 (500-1)	620-1 ³ / ₈	418 (500-1 ³ / ₈)																							
CIRCLING	680-1	467 (500-1)	760-1 ¹ / ₂	960-2 ¹ / ₂																							
			547 (600-1 ¹ / ₂)	747 (800-2 ¹ / ₂)																							

NE-2, 23 JAN 2025 to 20 FEB 2025

NE-2, 23 JAN 2025 to 20 FEB 2025