

| | | |
|---|------------------------|---|
| LOC/DME I-MFE 111.7 Chan 54 | APP CRS 137° | Rwy Idg 6983 TDZE 107 Apt Elev 107 |
|---|------------------------|---|

ILS or LOC RWY 14

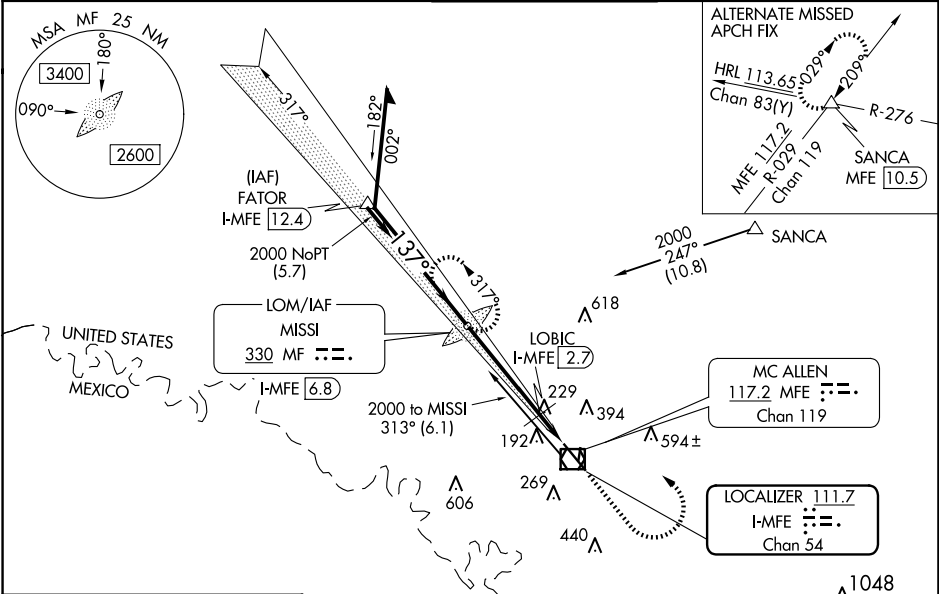
MC ALLEN INTL (MF'E)

ADF required.

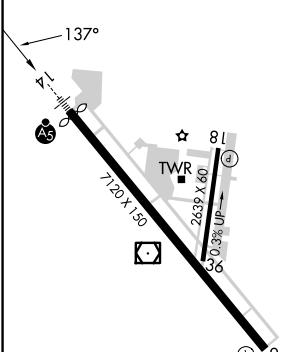
▼ Circling NA northeast of Rwy 14-32. When local altimeter setting not received, use Weslaco altimeter setting: increase all DA 39 feet; increase all MDA 40 feet and S-LOC 14 Cat C/D and Circling Cat C visibility 1/8 mile, increase LOBIC Fix Minimums S-LOC 14 Cat C/D visibility 1/4 mile. For inop ALS, increase S-LOC 14 Cat C/D visibility to 1/8 SM. For inop ALS when using Weslaco altimeter setting, increase LOBIC Fix Minimums S-LOC 14 Cat C/D visibility to 1/8 SM.

MALSR
MISSED APPROACH:
Climb to 1500 then climbing left turn to 2000 direct to MISSI LOM and hold.

| | | | | |
|----------------------|---------------------------------------|---|-------------------------|-------------------------|
| ATIS 128.5 | VALLEY APP CON 126.55 377.2 | MC ALLEN TOWER ★ 118.5 (CTAF) 256.9 | GND CON 121.8 | UNICOM 122.95 |
|----------------------|---------------------------------------|---|-------------------------|-------------------------|



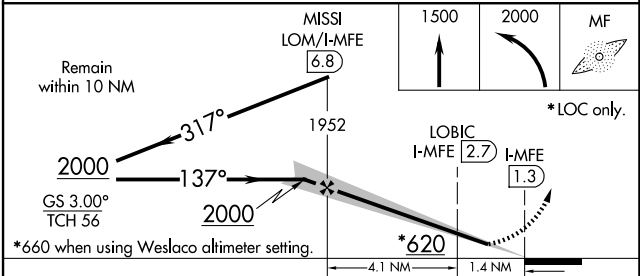
| | | |
|----------|---|----------|
| ELEV 107 | D | TDZE 107 |
|----------|---|----------|



REIL Rwy 32
HIRL Rwy 14-32
MIRL Rwy 18-36

FAF to MAP 5.5 NM

| | | | | | |
|---------|------|------|------|------|------|
| Knots | 60 | 90 | 120 | 150 | 180 |
| Min:Sec | 5:30 | 3:40 | 2:45 | 2:12 | 1:50 |



| CATEGORY | A | B | C | D |
|--------------------|-----------------------|---------------|------------------------------|------------------------------|
| S-ILS 14 | 307-1/2 200 (200-1/2) | | | |
| S-LOC 14 | 620-1/2 | 513 (600-1/2) | 620-1 | 513 (600-1) |
| C CIRCLING | 620-1 | 513 (600-1) | 620-1 1/2 513 (600-1 1/2) | 800-2 1/4 693 (700-2 1/4) |
| LOBIC FIX MINIMUMS | | | | |
| S-LOC 14 | 540-1/2 | 433 (500-1/2) | 540-3/4 | 433 (500-3/4) |
| C CIRCLING | 580-1 | 473 (500-1) | 580-1 1/2 473 (500-1 1/2) | 800-2 1/4 693 (700-2 1/4) |

SC-3, 23 JAN 2025 to 20 FEB 2025

SC-3, 23 JAN 2025 to 20 FEB 2025