

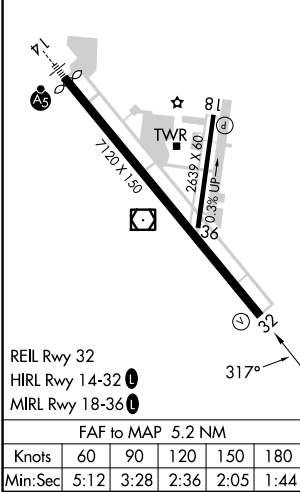
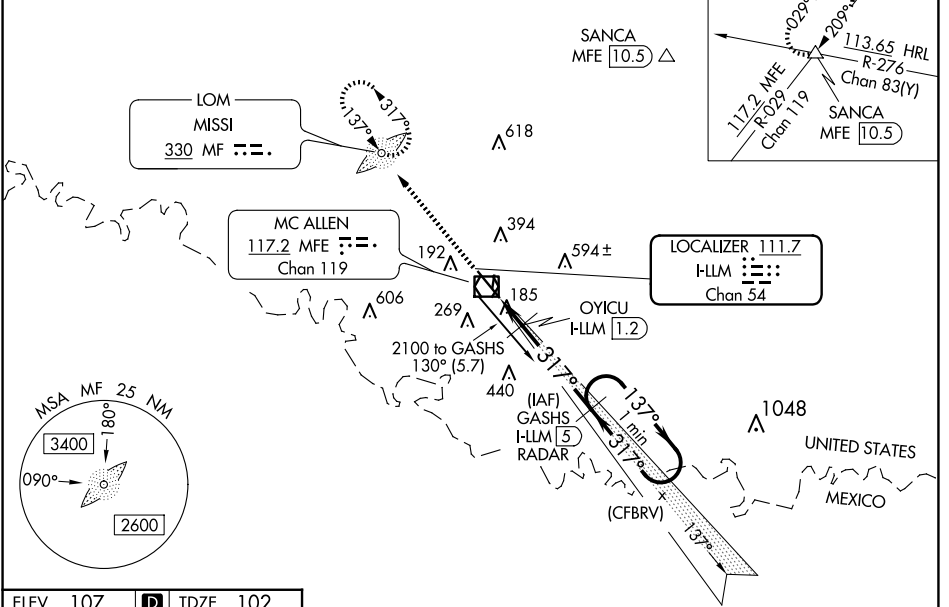
LOC/DME I-LLM <b>111.7</b> Chan <b>54</b>	APP CRS <b>317°</b>	Rwy Idg <b>7120</b> TDZE <b>102</b> Apt Elev <b>107</b>
---	------------------------	---

# ILS or LOC RWY 32

MC ALLEN INTL (MF'E)

<p><b>⚠</b> Circling NA northeast of Rwy 14-32. ADF and DME or Radar required. When local altimeter setting not received, use Weslaco altimeter setting: increase all DA 39 feet and MDA 40 feet.</p>		<p>MISSED APPROACH: Climb to 2100 direct MF LOM and hold</p>		
<p>ATIS <b>128.5</b></p>	<p>VALLEY APP CON <b>126.55 377.2</b></p>	<p>MC ALLEN TOWER ★ <b>118.5 (CTAF) 0 256.9</b></p>	<p>GND CON <b>121.8</b></p>	<p>UNICOM <b>122.95</b></p>

## DME or RADAR REQUIRED



SC-3, 23 JAN 2025 to 20 FEB 2025

SC-3, 23 JAN 2025 to 20 FEB 2025