


WAAS CH 78400 W14A	APP CRS 137°	Rwy Idg 6983 TDZE 107 Apt Elev 107
--	------------------------	---

RNAV (GPS) RWY 14

MC ALLEN INTL (MFE)

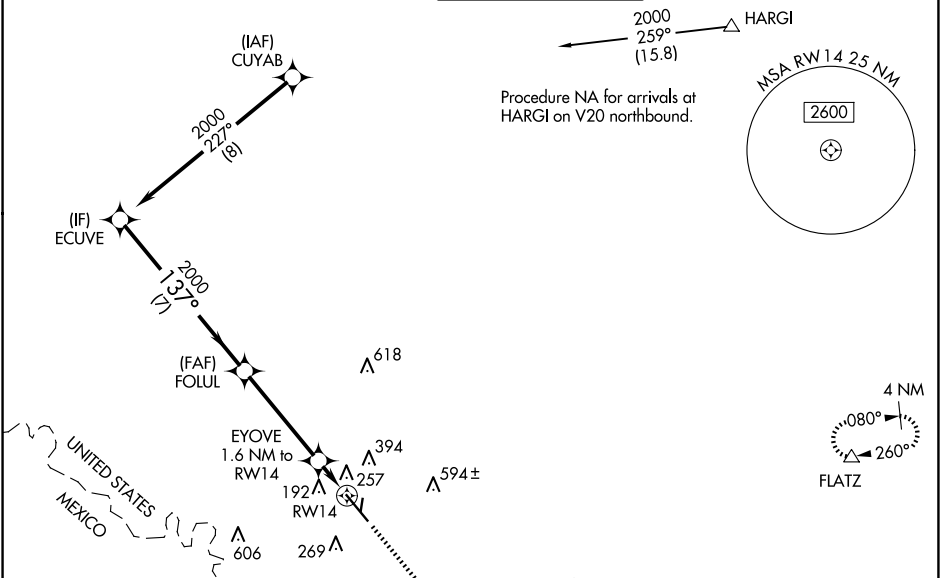
RNP APCH-GPS.

⚠ Circling NA northeast of Rwy 14-32. For inop ALS, increase LNAV/VNAV visibility all Cats to 3/8 SM and LNAV visibility Cat C/D to 1/8 SM. For inop ALS when using Weslaco altimeter setting, increase LNAV/VNAV visibility all Cats to 1 SM. For uncompensated Baro-VNAV systems, LNAV/VNAV NA below 1°C or above 54°C. When local altimeter setting not received, use Weslaco altimeter setting and increase all DA 39 feet and LNAV/VNAV all Cats visibility 1/8 SM; increase all MDA 40 feet and LNAV Cat C/D visibility 1/8 SM.

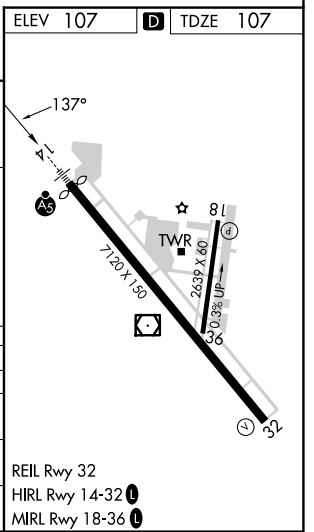
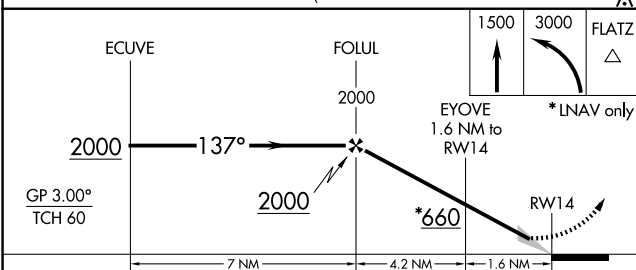
MALSR 

MISSED APPROACH: Climb to 1500 then climbing left turn to 3000 direct FLATZ and hold.

ATIS 128.5	VALLEY APP CON 126.55 377.2	MC ALLEN TOWER ★ 118.5 (CTAF) 256.9	GND CON 121.8	UNICOM 122.95
----------------------	---------------------------------------	--	-------------------------	-------------------------



ELEV 107	D TDZE 107
----------	-------------------



CATEGORY	A	B	C	D
LPV DA		307-1/2	200 (200-1/2)	
LNAV/VNAV DA		418-1/2	311 (400-1/2)	
LNAV MDA	520-1/2	413 (500-1/2)	520-3/4	413 (500-3/4)
C CIRCLING	580-1	473 (500-1)	580-1 1/2	800-2 1/4
			473 (500-1 1/2)	693 (700-2 1/4)

SC-3, 23 JAN 2025 to 20 FEB 2025

SC-3, 23 JAN 2025 to 20 FEB 2025