


VOR/DME MFE 117.2 Chan 119	APP CRS 134°	Rwy Idg 6983 TDZE 107 Apt Elev 107
------------------------------------------------	------------------------	---------------------------------------------------------------

VOR RWY 14

MC ALLEN INTL (MFE)

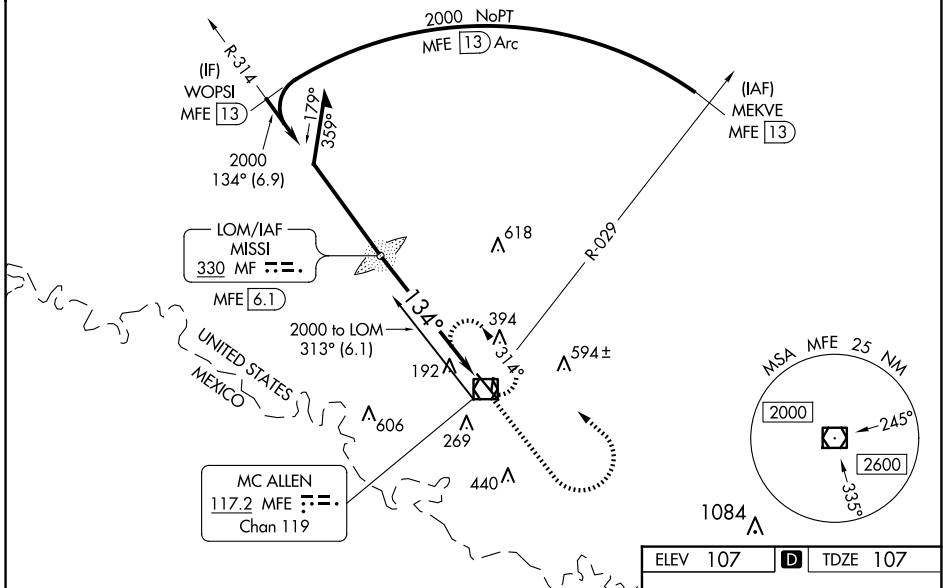
⚠ Circling NA northeast of Rwy 14-32. ADF or DME required. For nop MALSR, increase S-14 Cat C/D visibility to 1 1/8 mile. When local altimeter setting not received, use Weslaco altimeter setting and increase all MDA 40 feet and S-14 Cat C/D and Circling Cat C visibility 1/8 mile. VDP NA when using Weslaco altimeter setting.

MALSR 

MISSED APPROACH: Climb to 1000 then climbing left turn to 2000 direct MFE VOR/DME and hold.

ATIS 128.5	VALLEY APP CON 126.55 377.2	MC ALLEN TOWER ★ 118.5 (CTAF) 0 256.9	GND CON 121.8	UNICOM 122.95
----------------------	---------------------------------------	--------------------------------------------------------	-------------------------	-------------------------

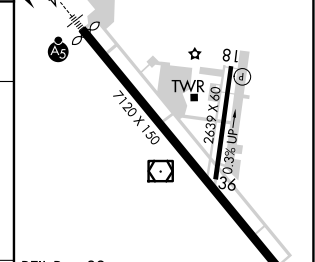
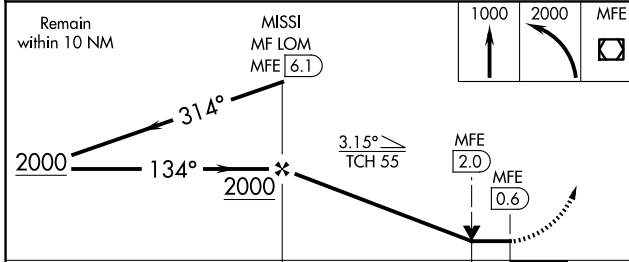
ADF or DME REQUIRED



SC-3, 23 JAN 2025 to 20 FEB 2025

SC-3, 23 JAN 2025 to 20 FEB 2025

ELEV 107	D	TDZE 107
----------	----------	----------



CATEGORY	A	B	C	D		
S-14	620-1/2 513 (600-1/2)		620-1 513 (600-1)			
C CIRCLING	620-1 513 (600-1)		620-1 1/2 513 (600-1/2)	800-2 1/4 693 (700-2 1/4)		
				FAF to MAP 5.5 NM		
	Knots	60	90	120	150	180
	Min:Sec	5:30	3:40	2:45	2:12	1:50