

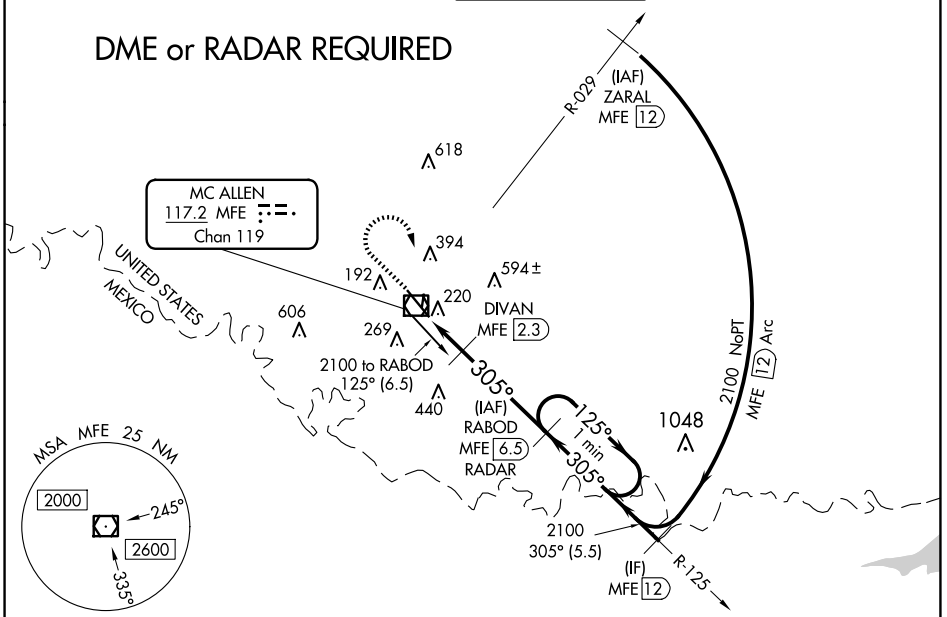
| | | |
|--|------------------------|---|
| VOR/DME MFE 117.2 Chan 119 | APP CRS 305° | Rwy Idg 7120 TDZE 102 Apt Elev 107 |
|--|------------------------|---|

VOR RWY 32

MC ALLEN INTL (MFE)

| | | | | |
|---|---------------------------------------|---|-------------------------|-------------------------|
| <p>⚠ Circling NA northeast of Rwy 14-32. When local altimeter setting not received, use Weslaco altimeter setting and increase all MDA 40 feet and S-32 Cat C/D and Circling Cat C visibility 1/8 mile, increase DIVAN Fix Minimums S-32 Cat C/D visibility 1/8 mile. VDP NA when using Weslaco altimeter setting.</p> | | <p>MISSED APPROACH: Climb to 900 then climbing right turn to 2100 direct MFE VOR/DME.</p> | | |
| ATIS 128.5 | VALLEY APP CON 126.55 377.2 | MC ALLEN TOWER* 118.5 (CTAF) 256.9 | GND CON 121.8 | UNICOM 122.95 |

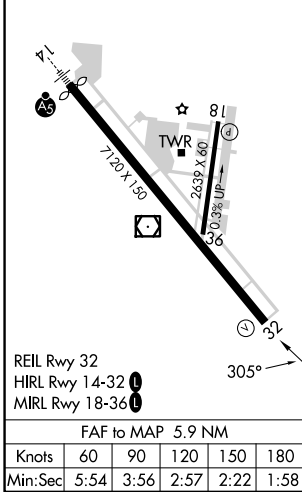
DME or RADAR REQUIRED



SC-3, 23 JAN 2025 to 20 FEB 2025

SC-3, 23 JAN 2025 to 20 FEB 2025

| | | |
|----------|----------|----------|
| ELEV 107 | D | TDZE 102 |
|----------|----------|----------|



| | | | | |
|--|-------------------|-------------|---------------------|----------------------------|
| 900 | 2100 | MFE | RABOD MFE 6.5 RADAR | One Minute Holding Pattern |
| MFE VOR/DME | MFE 0.6 | MFE 1.6 | DIVAN MFE 2.3 | MFE 6.5 |
| 1 NM | 0.7 NM | 4.2 NM | 125° | 305° |
| *660 TCH 52 *700 when using Weslaco altimeter setting. | | | | |
| CATEGORY | A | B | C | D |
| S-32 | 660-1 | 558 (600-1) | 660-1½ | 558 (600-1½) |
| C CIRCLING | 660-1 | 553 (600-1) | 660-1⅝ | 800-2¼ |
| DIVAN FIX MINIMUMS | | | | |
| S-32 | 480-1 378 (400-1) | | | |
| C CIRCLING | 580-1 | 473 (500-1) | 580-1½ | 800-2¼ |
| | | | 473 (500-1½) | 693 (700-2¼) |