

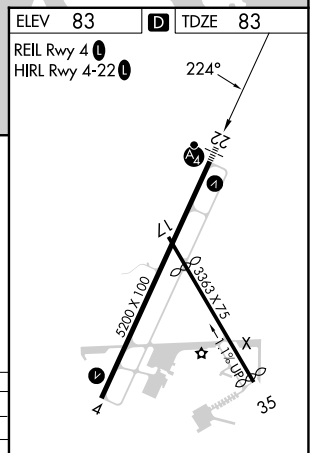
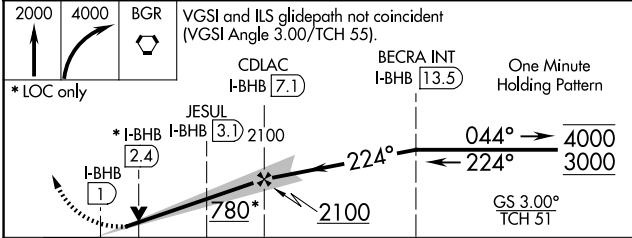
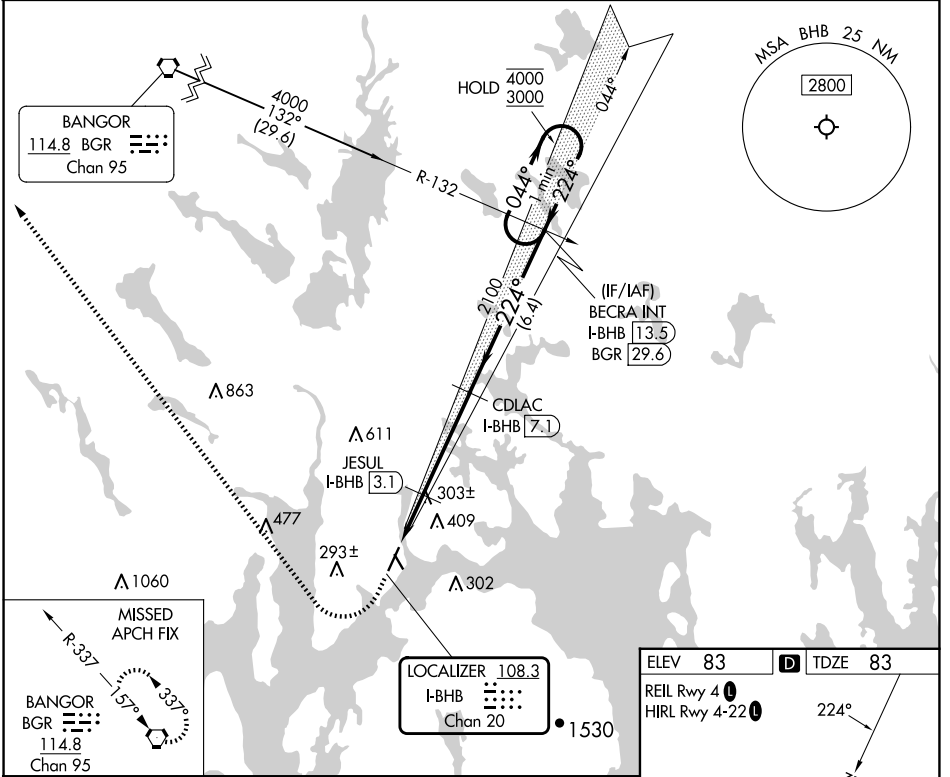
LOC/DME I-BHB <b>108.3</b> Chan <b>20</b>	APP CRS <b>224°</b>	Rwy ldg <b>5200</b> TDZE <b>83</b> Apt Elev <b>83</b>
---	------------------------	---

# ILS or LOC RWY 22

HANCOCK COUNTY/BAR HARBOR (BHB)

DME required.	MALSF	MISSED APPROACH: Climb to 2000 then climbing right turn to 4000 direct BGR VORTAC and hold.
<p>⚠ Circling Rwy 17, 35 NA at night.</p> <p>⚠ For inop ALS, increase S-LOC Cat C visibility to 1 3/8 SM. Autopilot coupled approach NA below 900 feet MSL.</p>		

AWOS-3PT <b>118.35</b>	BANGOR APP CON <b>133.6 284.65</b>	CLNC DEL <b>119.9</b>	UNICOM <b>123.0 (CTAF)</b>	<b>122.7</b> <b>0</b>
---------------------------	---------------------------------------	--------------------------	-------------------------------	-----------------------



ELEV 83	TDZE 83
REIL Rwy 4	HIRL Rwy 4-22
FAF to MAP 6.1 NM	
Knots	60 90 120 150 180
Min:Sec	6:06 4:04 3:03 2:26 2:02

NE-1, 23 JAN 2025 to 20 FEB 2025

NE-1, 23 JAN 2025 to 20 FEB 2025