

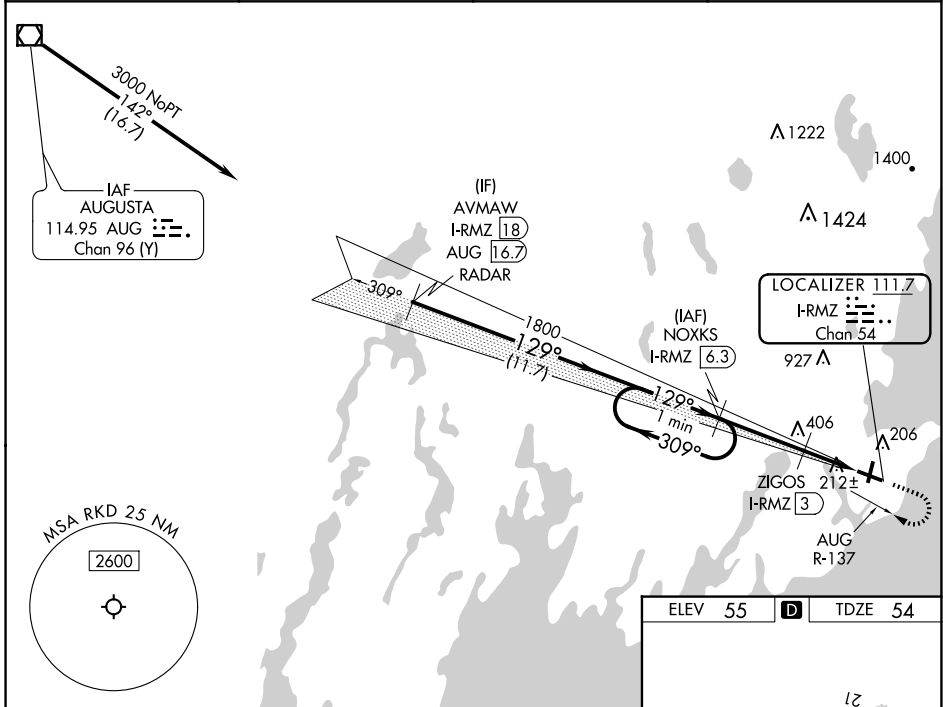
LOC/DME I-RMZ <b>111.7</b> Chan <b>54</b>	APP CRS <b>129°</b>	Rwy Idg <b>5012</b> TDZE <b>54</b> Apt Elev <b>55</b>
-------------------------------------------------	------------------------	-------------------------------------------------------------

# ILS or LOC RWY 13

KNOX COUNTY RGNL (R.KD)

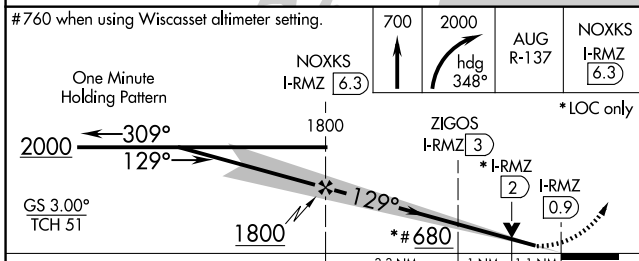
DME required.	MALSR 	MISSED APPROACH: Climb to 700 then climbing right turn to 2000 on heading 348° and on AUG R-137 to NOXKS/I-RMZ 6.3 DME and hold.
<p>▼ VDP NA when using Wiscasset altimeter setting. When local altimeter setting not received, use Wiscasset altimeter setting and increase all DA to 319 feet and all MDA 80 feet, increase S-LOC 13 Cats C/D visibility 3/8 SM and Circling Cat C 1/2 SM. For inop ALS when using Wiscasset altimeter setting increase S-ILS 13 all Cats visibility to 3/8 SM and S-LOC 13 Cats C/D to 1 3/8 SM.</p>		

AWOS-3PT <b>119.025</b>	PORTLAND APP CON* <b>120.4 299.2</b>	CLNC DEL <b>123.8</b>	UNICOM <b>123.05 (CTAF)</b>
----------------------------	-----------------------------------------	--------------------------	--------------------------------

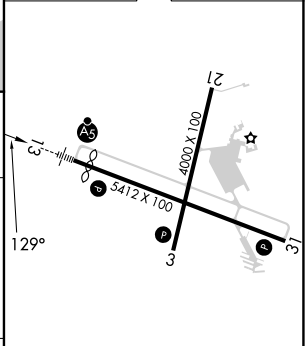


NE-1, 23 JAN 2025 to 20 FEB 2025

NE-1, 23 JAN 2025 to 20 FEB 2025



ELEV 55	D	TDZE 54
---------	---	---------



CATEGORY	A	B	C	D
S-ILS 13		254-1/2	200 (200-1/2)	
S-LOC 13	440-1/2 386 (400-1/2)		440-5/8 386 (400-5/8)	
CIRCLING	580-1 525 (600-1)		720-1 3/4 665 (700-1 3/4)	1140-3 1085 (1100-3)

REIL Rwy 3 and 31  
MIRL Rwy 3-21  
HIRL Rwy 13-31