

APP CRS	Rwy Idg	5412
309°	TDZE	55
	Apt Elev	55

RNAV (GPS) RWY 31

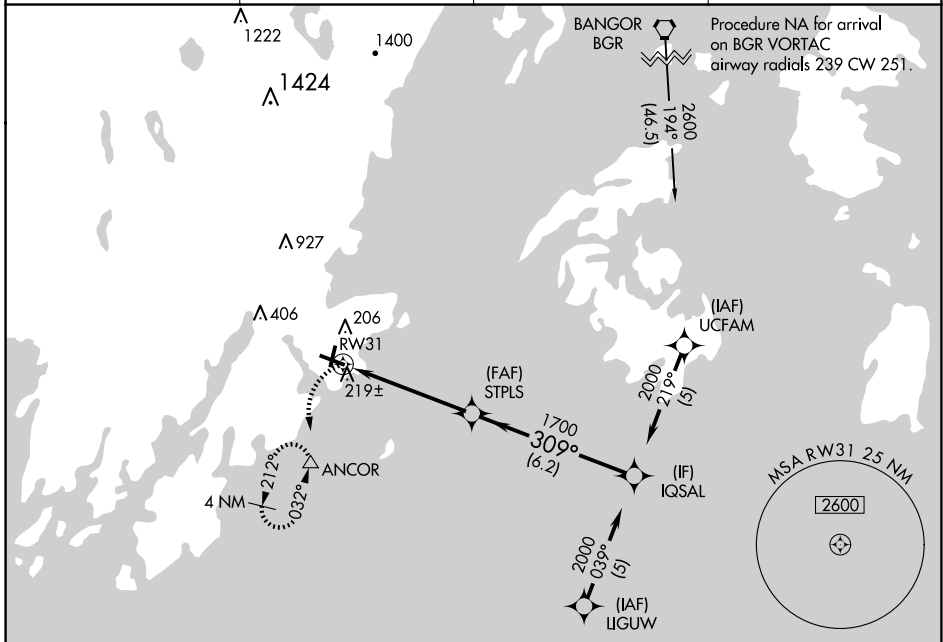
KNOX COUNTY RGNL (R.KD)

RNP APCH.

▽
▲ Rwy 31 helicopter visibility reduction below 3/4 SM NA.

MISSED APPROACH: Climbing left turn to 2000 direct ANCOR and hold, continue climb-in-hold to 2000.

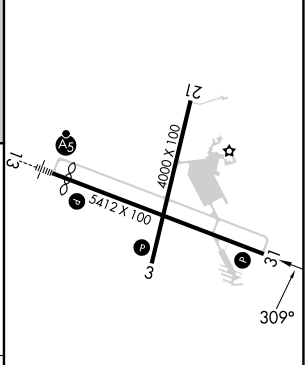
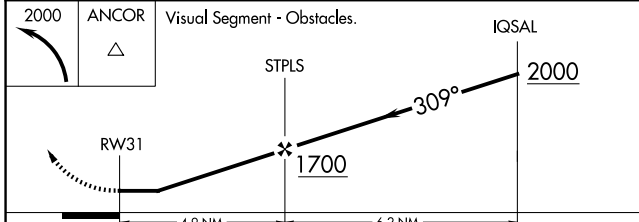
AWOS-3PT 119.025	PORTLAND APP CON ★ 120.4 299.2	CLNC DEL 123.8	UNICOM 123.05 (CTAF) 📻
----------------------------	--	--------------------------	---



KENNEBUNK ENE **2000** **086°** (80.5)

Procedure NA for arrivals at ENE VOR/DME on T295/V93 southwest bound.

ELEV	55	D	TDZE	55
------	-----------	----------	------	-----------



CATEGORY	A	B	C	D
LNVA MDA	480-1	425 (500-1)	480-1 1/4	425 (500-1 1/4)
C CIRCLING	580-1	525 (600-1)	720-1 3/4	1140-3
			665 (700-1 3/4)	1085 (1100-3)

REIL Rwy 3 and 31 **📻**
 MIRL Rwy 3-21 **📻**
 HIRL Rwy 13-31 **📻**

NE-1, 23 JAN 2025 to 20 FEB 2025

NE-1, 23 JAN 2025 to 20 FEB 2025