

TACAN FOK Chan 47 (111.0)	APP CRS 230°	Rwy Idg TDZE 66 Apt Elev 66	9002
---------------------------------	-----------------	-----------------------------------	------

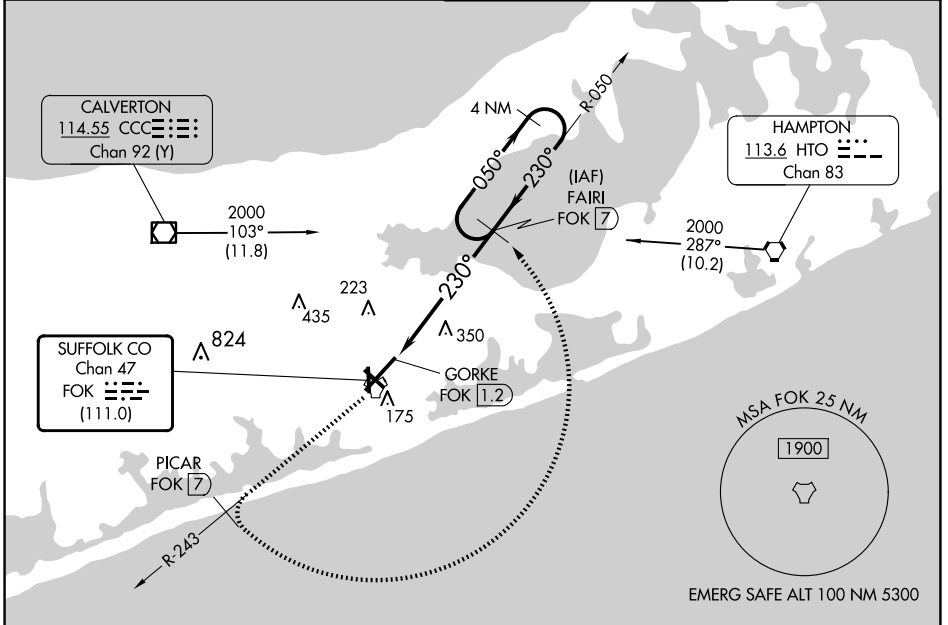
TACAN RWY 24

FRANCIS S GABRESKI (F'OK)

VDP NA with Shirley altimeter setting. When local altimeter setting not received, use Shirley altimeter setting and increase all MDAs 40 feet and S-24 Cat C/D visibility 1/2 SM and Circling Cat C visibility 1/4 SM. Circling Rwy 15 NA at night.

MALSRL
MISSED APPROACH: Climb to 2000 on FOK TACAN R-243 to PICAR/7 DME then arc CCW to FAIRI/7 DME and hold.

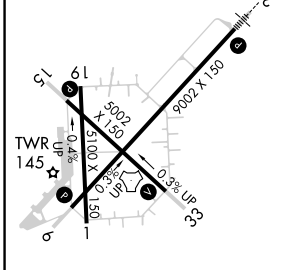
ASOS 119.925	NEW YORK APP CON 125.975 343.65	SUFFOLK COUNTY TOWER ★ 125.3 (CTAF) 236.6	GND CON 121.8 225.4
------------------------	---	---	-------------------------------



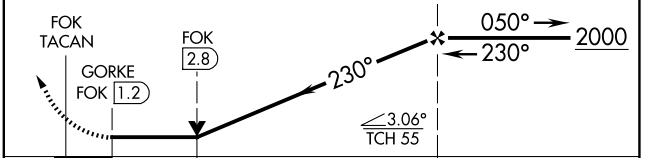
NE-2, 23 JAN 2025 to 20 FEB 2025

NE-2, 23 JAN 2025 to 20 FEB 2025

ELEV 66	TDZE 66
---------	---------



2000
FOK R-243 → PICAR FOK (7) → Arc CCW → FAIRI FOK (7) → VGS1 and descent angles not coincident (VGS1 Angle 3.00/TCH 77).
FAIRI FOK (7) 4 NM Holding Pattern



CATEGORY	A	B	C	D
S-24	660-1/2 594 (600-1/2)		660-1 1/4 594 (600-1 1/4)	
CIRCLING	660-1 594 (600-1)		700-1 3/4 634 (700-1 3/4)	740-2 1/4 674 (700-2 1/4)

HIRL Rwy 6-24 (L)
MIRL Rwy 15-33 (L)
REIL Rws 6, 15, and 33 (L)