


LOC/DME I-VQV <b>109.5</b> Chan <b>32</b>	APP CRS <b>005°</b>	Rwy Idg TDZE Apt Elev <b>12504</b> <b>72</b> <b>80</b>
---	------------------------	---

# ILS or LOC RWY 36R

CECIL (VQV)

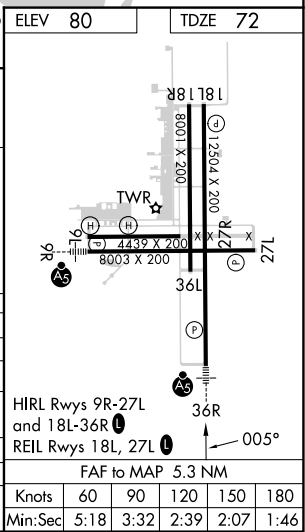
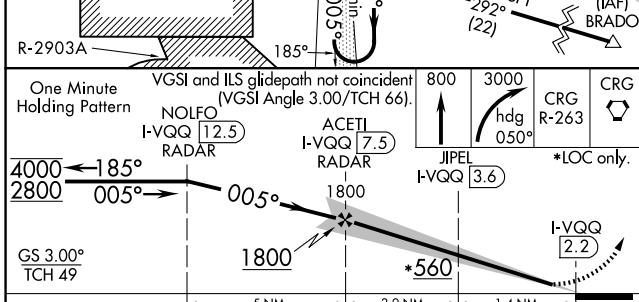
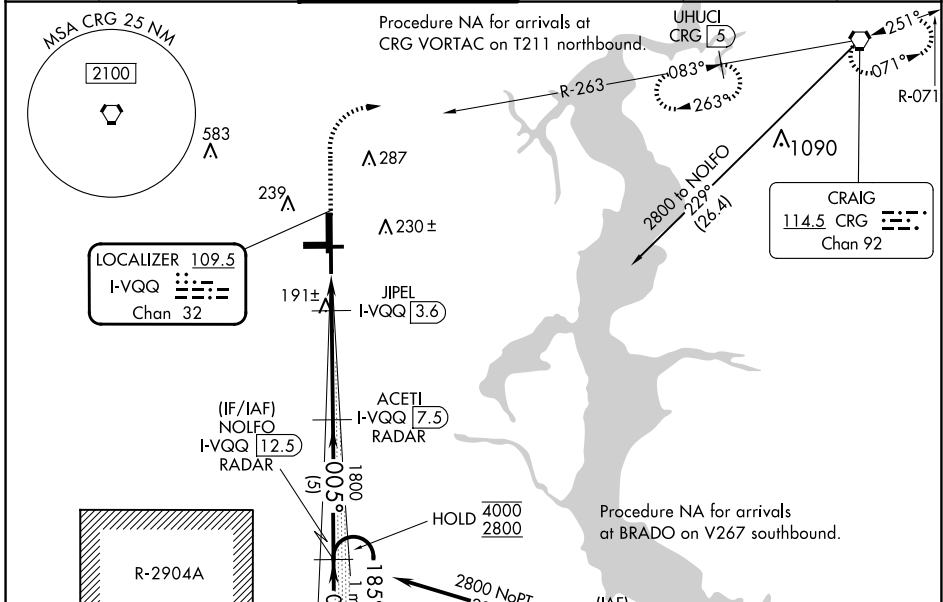
From BRADO: RNAV 1-GPS required.  
DME or RADAR required for LOC only.

MALS R 

**MISSED APPROACH:** Climb to 800 then climbing right turn to 3000 on heading 050° and on CRG VORTAC R-263 to CRG VORTAC and hold. (TACAN aircraft climb to 800 then climbing right turn to 3000 on heading 050° and on CRG VORTAC R-263 to UHUCI/CRG 5 DME and hold west, right turn, 083° inbound).

**For inop ALS, increase S-ILS 36R Cat E visibility to 3/4 SM, S-LOC 36R Cats C/D/E visibility to 1 3/8 SM, increase JIPEL fix minimums S-LOC 36R Cat E visibility to 1 1/8 SM.**

ATIS <b>125.275</b>	JACKSONVILLE APP CON <b>127.775 377.075</b>	CECIL TOWER* <b>126.1 (CTAF) 235.625</b>	GND CON <b>121.625 226.675</b>	CLNC DEL <b>123.975 254.25</b>	GCO <b>135.075</b>
------------------------	--	---	-----------------------------------	-----------------------------------	-----------------------



CATEGORY	A	B	C	D	E
S-ILS 36R	272-1/2 200 (200-1/2)				
S-LOC 36R	560-1/2	488 (500-1/2)	560-1	488 (500-1)	
<b>C</b> CIRCLING	560-1	480 (500-1)	600-1 1/2 520 (600-1/2)	640-2 560 (600-2)	900-3 820 (900-3)
JIPEL FIX MINIMUMS (DME REQUIRED)					
S-LOC 36R	460-1/2	388 (400-1/2)	460-5/8	388 (400-5/8)	
<b>C</b> CIRCLING	540-1 460 (500-1)	560-1 480 (500-1)	600-1 1/2 520 (600-1/2)	640-2 560 (600-2)	900-3 820 (900-3)

FAF to MAP 5.3 NM					
Knots	60	90	120	150	180
Min:Sec	5:18	3:32	2:39	2:07	1:46

SE-3, 23 JAN 2025 to 20 FEB 2025

SE-3, 23 JAN 2025 to 20 FEB 2025