

WAAS CH 56616 W18A	APP CRS 185°	Rwy Idg 12504 TDZE 79 Apt Elev 80
--	------------------------	--

RNAV (GPS) RWY 18L

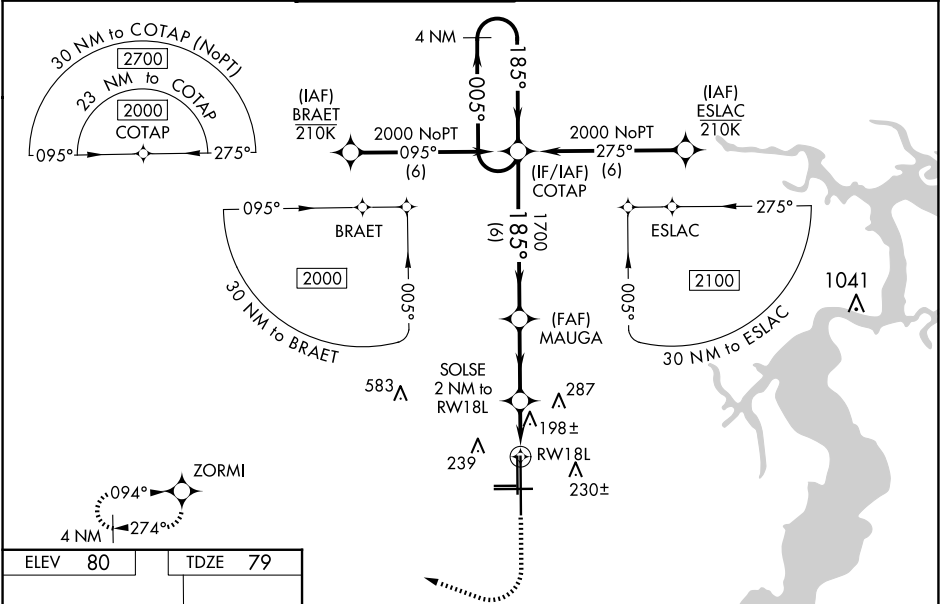
CECIL (VQQ)

▼ Baro-VNAV NA when using Jacksonville Intl altimeter setting. For uncompensated Baro-VNAV systems, LNAV/VNAV NA below -1.5°C (5°F) or above 54°C (130°F). DME/DME RNP-0.3 NA.

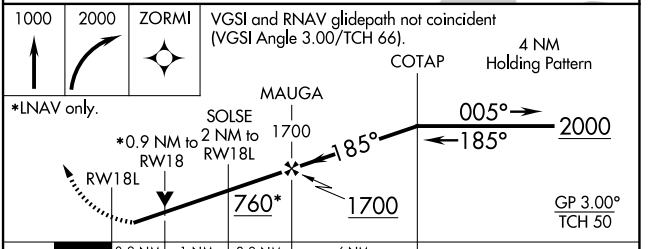
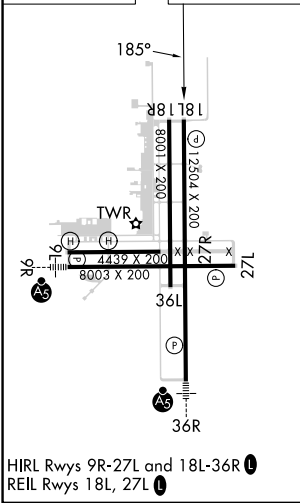
▲ When local altimeter setting not received, use Jacksonville Intl altimeter setting and increase all DA 52 feet and all MDA 60 feet. For inop MALS, increase LNAV Cats C/D visibility to 1½ mile. For inop MALS, when using Jacksonville Intl altimeter setting, increase LNAV/VNAV all Cats visibility to 1½ mile and LNAV Cats C/D visibility to 1½ mile. Inop table does not apply to LPV and LNAV/VNAV all Cats and LNAV Cat A/B visibilities. When using Jacksonville Intl altimeter setting, inop table does not apply to LPV all Cats and LNAV Cat A/B visibilities. VDP NA when using Jacksonville Intl altimeter setting.

MISSED APPROACH: Climb to 1000 then dimbing right turn to 2000 direct ZORMI and hold.

ATIS 125.275	JACKSONVILLE APP CON 127.775 377.075	CECIL TOWER* 126.1 (CTAF) 235.625	GND CON 121.625 226.675	CLNC DEL 123.975 254.25	GCO 135.075
------------------------	--	---	-----------------------------------	-----------------------------------	-----------------------



ELEV 80	TDZE 79
----------------	----------------



CATEGORY	A	B	C	D
LPV DA		329-1	250 (300-1)	
LNAV/VNAV DA		368-1	289 (300-1)	
LNAV MDA		460-1	381 (400-1)	
C CIRCLING	540-1 460 (500-1)	560-1 480 (500-1)	600-1½ 520 (600-1½)	640-2 560 (600-2)

SE-3, 23 JAN 2025 to 20 FEB 2025

SE-3, 23 JAN 2025 to 20 FEB 2025