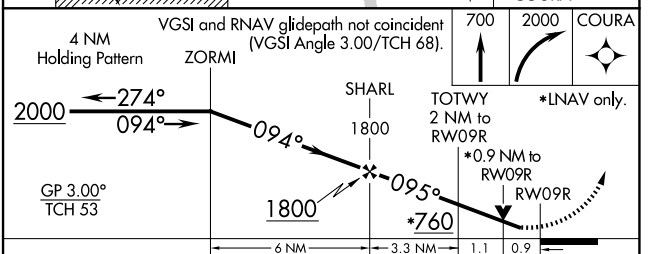
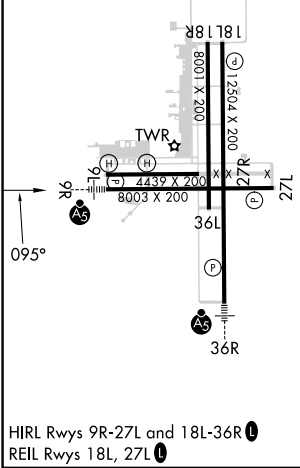
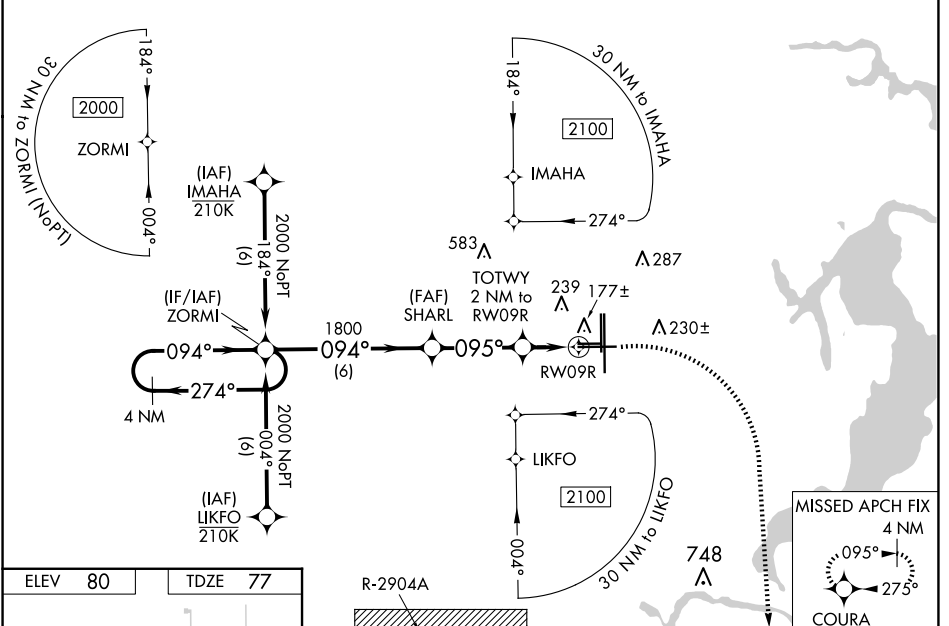


WAAS CH <b>50516</b> <b>W09A</b>	APP CRS <b>095°</b>	Rwy Idg <b>8003</b> TDZE <b>77</b> Apt Elev <b>80</b>
--	------------------------	---

# RNAV (GPS) RWY 9R

CECIL (VQQ)

<p><b>▼</b> Baro-VNAV NA when using Jacksonville Intl altimeter setting. For uncompensated Baro-VNAV systems, LNAV/VNAV NA below -15°C (5°F) or above 54°C (130°F). DME/DME RNP-0.3 NA.</p> <p><b>▲</b> Helicopter visibility reduction below 3/4 SM NA. When local altimeter setting not received, use Jacksonville Intl altimeter setting and increase all DA 52 feet and all MDA 60 feet. For inop MALSR, increase LPV and LNAV/VNAV all Cats visibility to 7/8 mile, and LNAV all Cats visibility to 1 mile. For inop MALSR, when using Jacksonville Intl altimeter setting, increase LPV all Cats visibility to 1 mile, LNAV/VNAV all Cats visibility to 1 mile, and LNAV Cats C/D visibility to 1 1/8 mile.</p>		<p>MALSR</p>	<p>MISSED APPROACH: Climb to 700 then climbing right turn to 2000 direct COURA and hold.</p>		
ATIS <b>125.275</b>	JACKSONVILLE APP CON <b>127.775 377.075</b>	CECIL TOWER* <b>126.1 (CTAF) 235.625</b>	GND CON <b>121.625 226.675</b>	CINC DEL <b>123.975 254.25</b>	GCO <b>135.075</b>



CATEGORY	A	B	C	D
LPV DA		351-3/4	274 (300-3/4)	
LNAV/VNAV DA		338-3/4	261 (300-3/4)	
LNAV MDA		440-3/4	363 (400-3/4)	
CIRCLING	540-1	560-1	600-1 1/2	640-2
	460 (500-1)	480 (500-1)	520 (600-1 1/2)	560 (600-2)

SE-3, 23 JAN 2025 to 20 FEB 2025

SE-3, 23 JAN 2025 to 20 FEB 2025