

NDB DJN 347	APCH CRS 186°	Rwy ldg TDZE Arpt Elev	N/A N/A 1285
-----------------------	-------------------------	---------------------------	---

[USA]

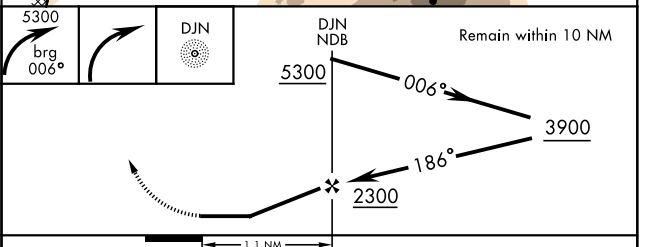
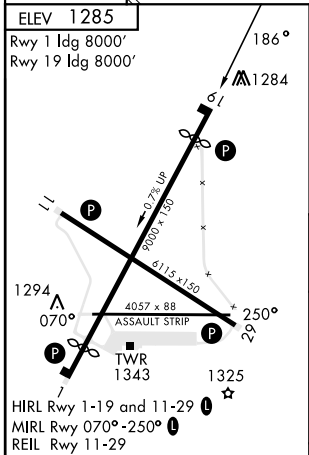
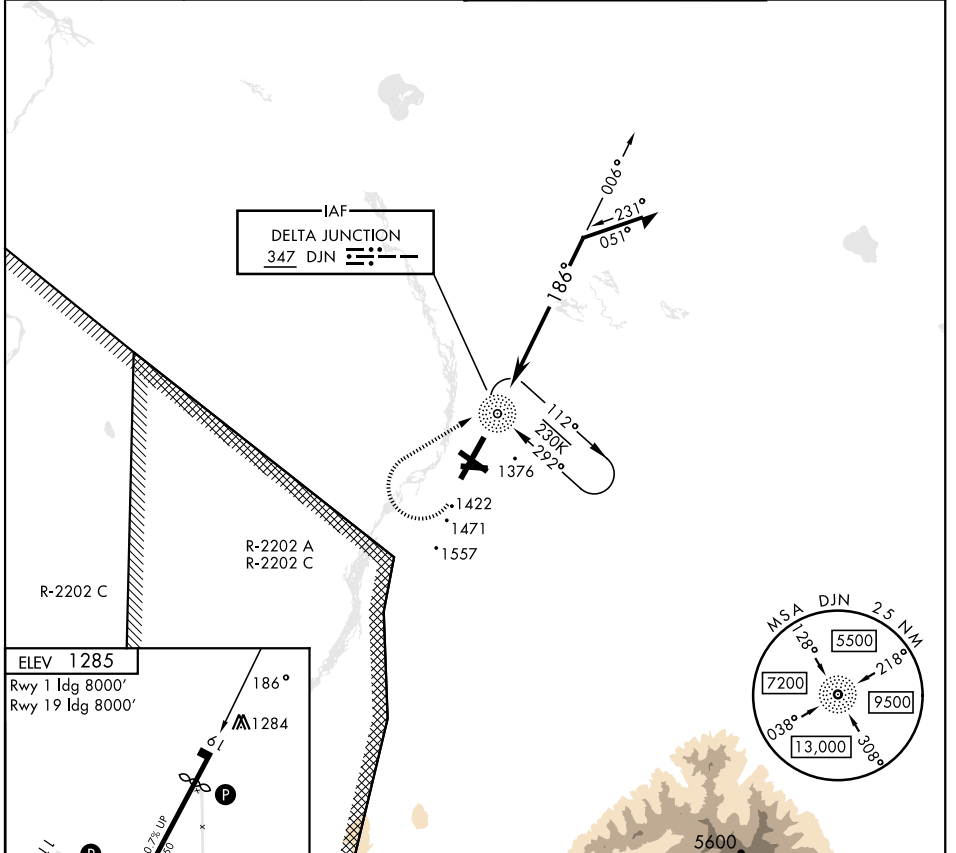
ALLEN AAF (PABI)

RNAV or RADAR required.

MISSED APPROACH: Climbing right turn to 5300 via 006° bearing from DJN NDB, then right turn direct DJN NDB and hold.

▼ * Circling not authorized East of Rwy 1-19.

ATIS 132.075	ASOS 135.65	ANCHORAGE CENTER 135.3 322.5	CTAF 122.9	TOWER ★ 119.8 235.775 40.8 (E) FM	GND CON 118.225 251.05
------------------------	-----------------------	--	----------------------	---	----------------------------------



FAF to MAP 1.1 NM					CATEGORY		C		D	
Knots	60	90	120	150	A	B	C		D	
Min:Sec	1:06	0:44	0:33	0:26	1880-1	595 (600-1)	1880-1½ 595 (600-1½)		2040-2½ 755 (800-2½)	
					<input checked="" type="checkbox"/> CIRCLING*					

AK, 26 DEC 2024 to 20 FEB 2025

AK, 26 DEC 2024 to 20 FEB 2025