

# RNAV (GPS) RWY 10

APCH CRS <b>101°</b>	Rwy Idg <b>6115</b>
	TDZE <b>1253</b>
	Arprt Elev <b>1285</b>

[USA]

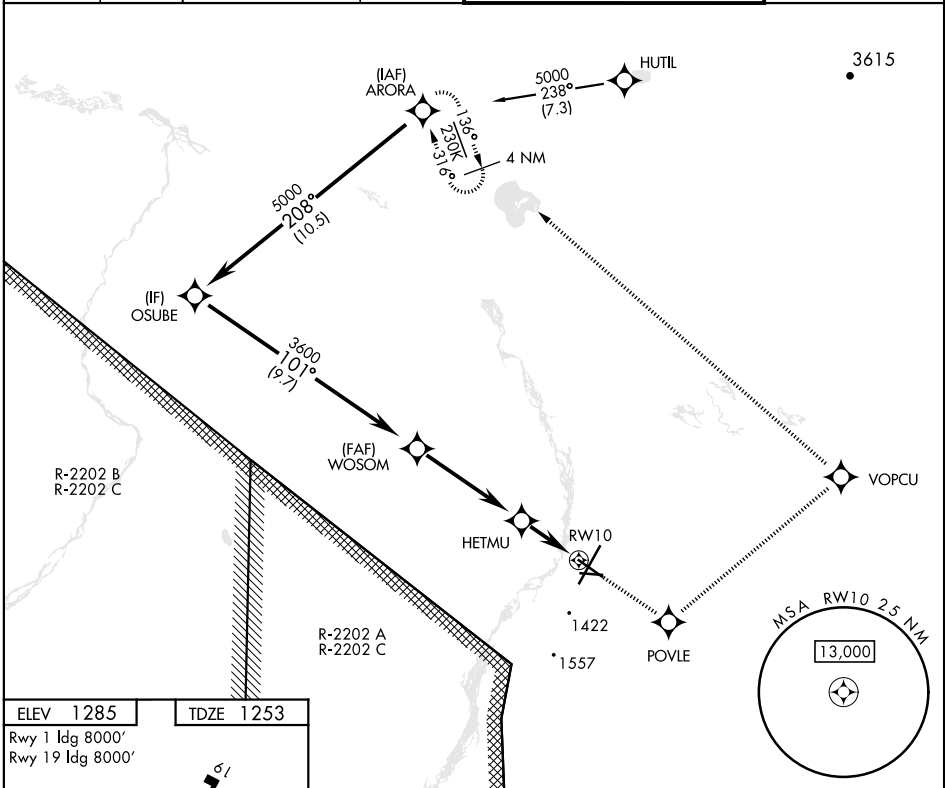
ALLEN AAF (PABI)

RNP APCH-GPS

▼ \* Circling not authorized East of Rwy 1-19.

MISSED APPROACH: Climb to 5000 direct POVLE, and via 027° track to VOPCU, left turn via 289° track to ARORA and hold.

ATIS <b>132.075</b>	ASOS <b>135.65</b>	ANCHORAGE CENTER <b>135.3 322.5</b>	CTAF <b>122.9 0</b>	TOWER ★ <b>119.8 235.775 40.8 (E) FM</b>	GND CON <b>118.225 251.05</b>
------------------------	-----------------------	--	------------------------	---	----------------------------------

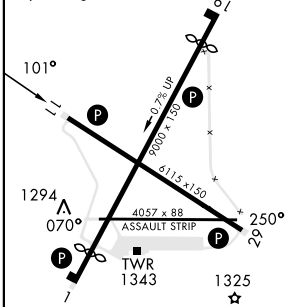


AK, 26 DEC 2024 to 20 FEB 2025

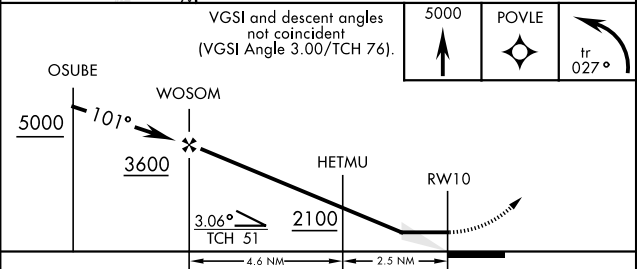
AK, 26 DEC 2024 to 20 FEB 2025

ELEV <b>1285</b>	TDZE <b>1253</b>
------------------	------------------

Rwy 1 Idg 8000'  
Rwy 19 Idg 8000'



HIRL Rwy 1-19 and 11-29  
MIRL Rwy 070°-250°  
REIL Rwy 11-29



CATEGORY	A	B	C	D
LNAV MDA	1640-1	387 (400-1)	1640-1½	387 (400-1½)
MIRL MDA	1740-1	1780-1	1860-1½	2040-2½
<b>C</b> CIRCLING*	455 (500-1)	495 (500-1)	575 (600-1½)	755 (800-2½)

# RNAV (GPS) RWY 10