

NDB ICW <b>525</b>	APP CRS <b>051°</b>	Rwy Idg 4600
		TDZE 368
		Apt Elev 368

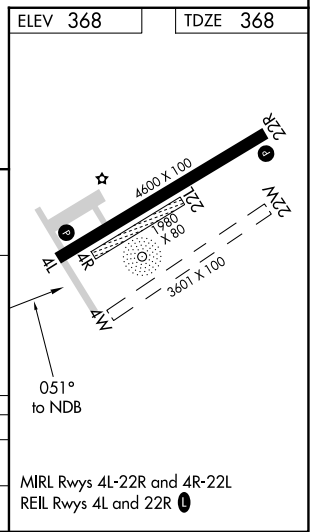
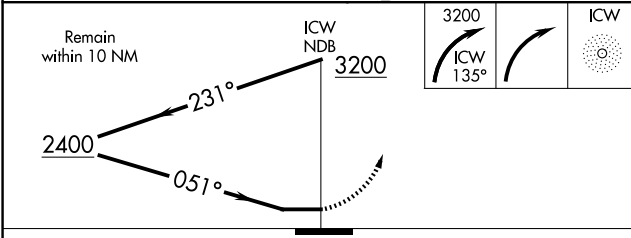
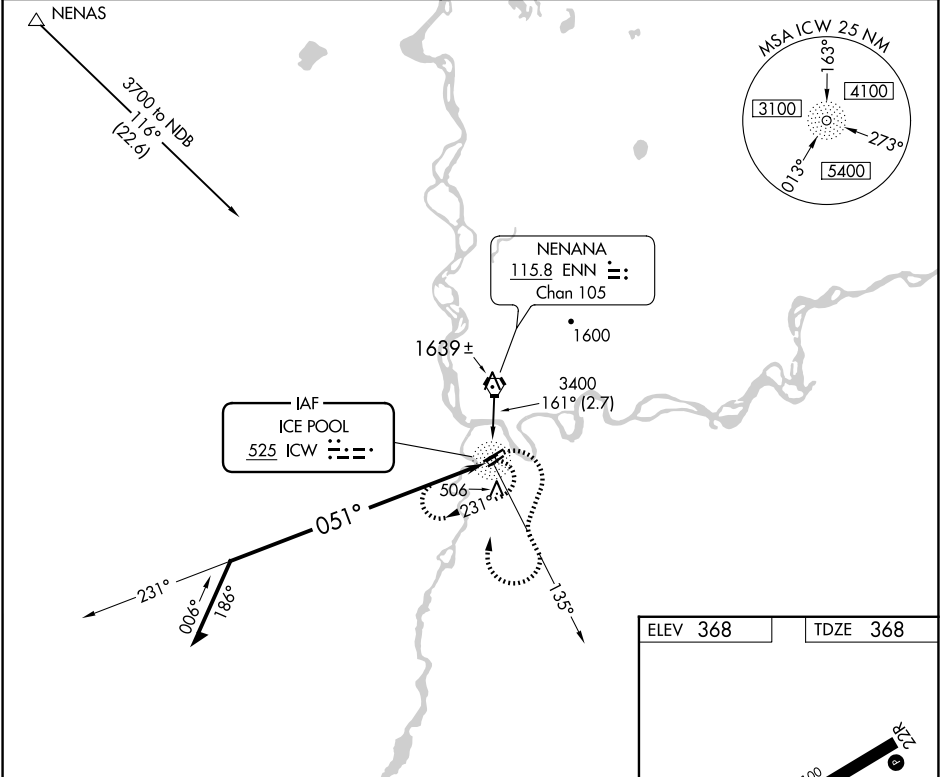
# NDB RWY 4L

NENANA MUNI (ENN) (PANN)

**⚠** Circling NA northwest of Rwy 4L-22R. When local altimeter setting not received, use Fairbanks Intl altimeter setting and increase all MDAs 100 feet and S-4L Cat C and Circling Cats C/D visibility ¼ SM. Procedure NA at night. Circling NA to Rwys 4R, 22L, 4W and 22W. Rwy 4L helicopter visibility reduction below 1 SM NA.

**MISSED APPROACH:** Climbing right turn to 3200 on ICW NDB 135° bearing, then right turn direct ICW NDB and hold.

ASOS <b>125.2</b>	FAIRBANKS APP CON <b>125.35 363.2</b>	FAIRBANKS RADIO <b>122.5</b>	CTAF <b>122.1</b>
----------------------	--	---------------------------------	----------------------



CATEGORY	A	B	C	D
S-4L	1000-1	632 (700-1)	1000-1¾ 632 (700-1¾)	1000-2 632 (700-2)
CIRCLING	1000-1	632 (700-1)	1180-2½ 812 (900-2½)	1180-2¾ 812 (900-2¾)

AK, 26 DEC 2024 to 20 FEB 2025

AK, 26 DEC 2024 to 20 FEB 2025