

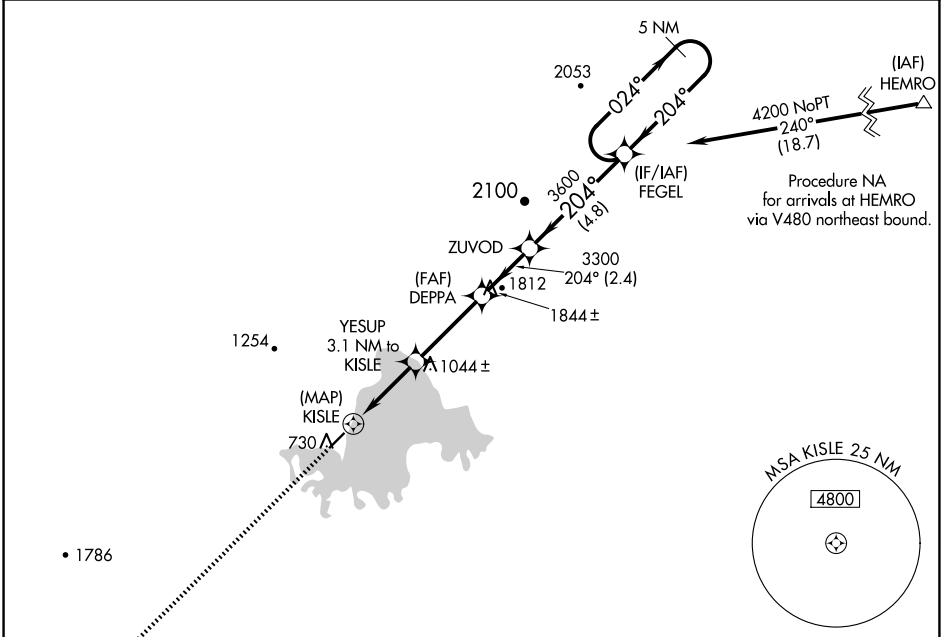
APP CRS 204°	Rwy Idg 4184
	TDZE 682
	Apt Elev 682

RNAV (GPS) RWY 21

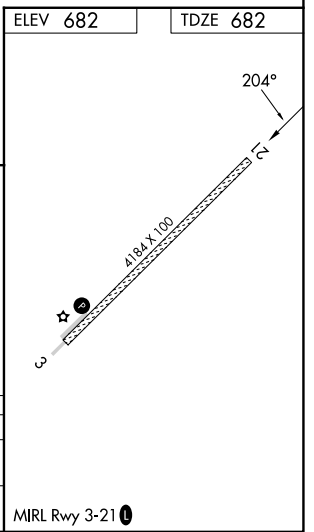
MINCHUMINA (MHM) (P.M.H)

-36°C DME/DME RNP-0.3 NA. Circling NA west of Rwy 3-21.	MISSED APPROACH: Climb to 3400 direct BECAG and hold.
---	---

AWOS-3P 135.55	ANCHORAGE CENTER 120.9 319.2	FAIRBANKS RADIO 122.2	CTAF 122.9
--------------------------	--	---------------------------------	----------------------



ELEV 682	TDZE 682				
3400 BECAG	FEGEL 5 NM Holding Pattern				
YESUP 3.1 NM to KISLE DEPPA ZUVOD KISLE 1.5 NM to KISLE TCH 35 2060 3300 3600 4200 024° → ← 204°	024° → ← 204° 4200 184 x 100 5				
0.5	1.5	1.6	3.3 NM	2.4 NM	4.8 NM
CATEGORY	A	B	C	D	
LNVA MDA	1460-1 778 (800-1)	1460-1¼ 778 (800-1¼)	1460-2½ 778 (800-2½)		
CIRCLING	1460-1 778 (800-1)	1460-1¼ 778 (800-1¼)	1460-2½ 778 (800-2½)		



AK, 26 DEC 2024 to 20 FEB 2025

AK, 26 DEC 2024 to 20 FEB 2025