

LOC/DME I-ENA <b>108.9</b> Chan 26	APP CRS <b>196°</b>	Rwy ldg <b>7575</b> TDZE <b>98</b> Apt Elev <b>100</b>
--	------------------------	--

# ILS Y or LOC Y RWY 20R

KENAI MUNI (ENA) (PAEN)

TACAN required.

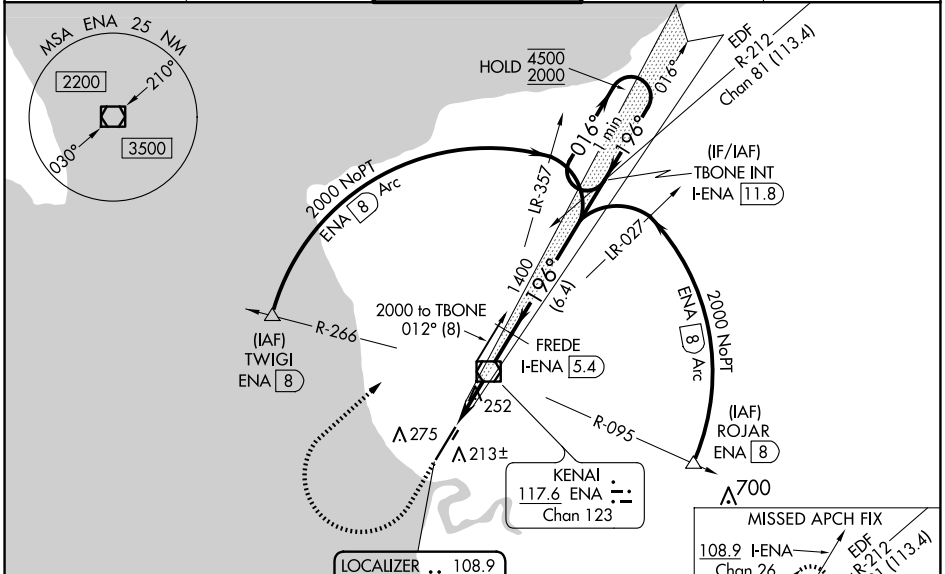
**⚠** Circling NA to Rwys 2W and 20W. Circling Rwy 2R, 20L NA at night. For inop ALS, increase S-ILS 20R Cat E visibility to RVR 4000. For inop ALS, increase S-LOC 20R Cat E visibility to 1 1/4 SM.  
# RVR 1800 authorized with use of FD or AP or HUD to DA.

**MALS**R

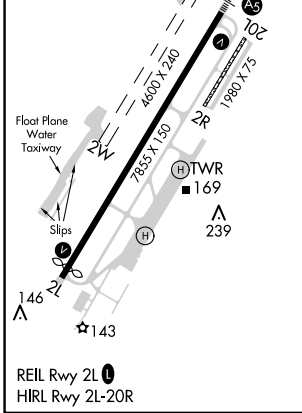
MISSED APPROACH: Climb to 1800 then climbing right turn to 4000 on heading 046° and on EDF TACAN R-212 to TBONE INT/EDF 49.2 DME and hold.

† Missed approach requires minimum climb of 800 feet per NM to 4000; if unable to meet climb gradient, see ILS Z or LOC Z RWY 20R.

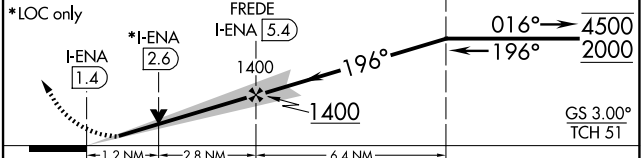
ATIS <b>133.35</b>	ANCHORAGE CENTER <b>125.7 379.1</b>	KENAI TOWER* <b>121.3 (CTAF) 239.3</b>	GND CON <b>118.75</b>	KENAI RADIO <b>122.65</b>
-----------------------	--	---	--------------------------	------------------------------



ELEV 100	<b>D</b>	TDZE 98
----------	----------	---------



1800	4000	EDF R-212	hdg 046°	Use I-ENA DME when on the localizer course.	TBONE INT I-ENA 11.8	One Minute Holding Pattern
------	------	-----------	----------	---	----------------------	----------------------------



CATEGORY	A	B	C	D	E
S-ILS 20R #†	298/24 200 (200-1/2)				
S-LOC 20R †	520/24	422 (500-1/2)	520/40 422 (500-3/4)		
<b>C</b> CIRCLING	560-1 460 (500-1)	580-1 480 (500-1)	580-1 1/2 480 (500-1 1/2)	680-2 580 (600-2)	760-2 1/4 660 (700-2 1/4)

AK, 26 DEC 2024 to 20 FEB 2025

AK, 26 DEC 2024 to 20 FEB 2025