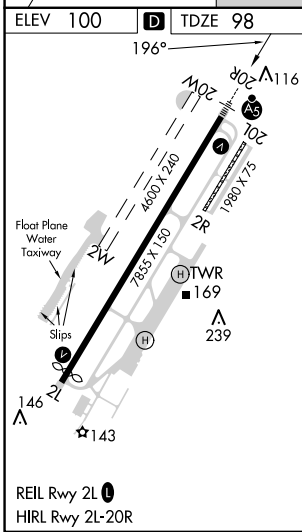
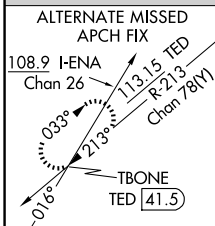
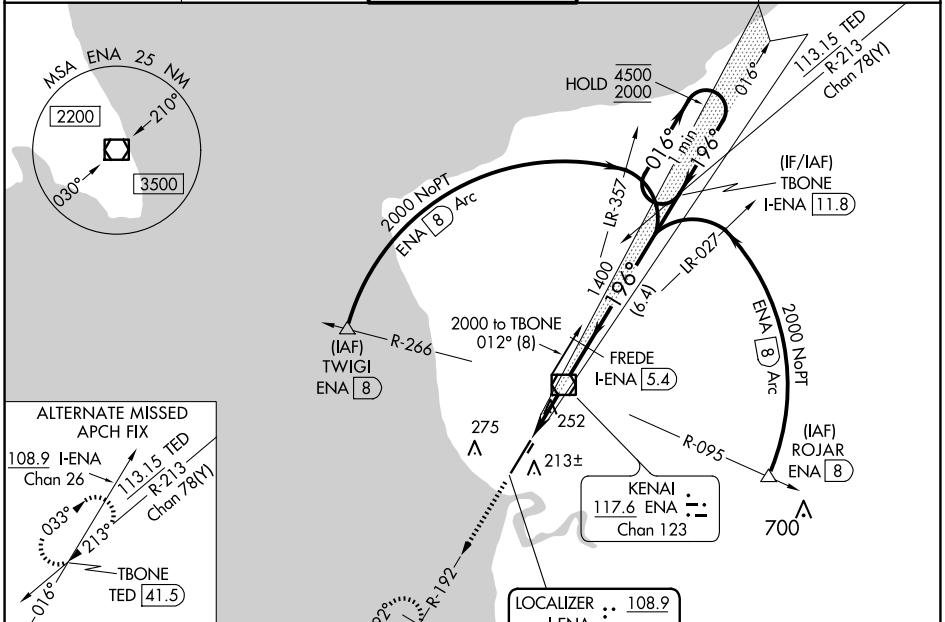


LOC/DME I-ENA 108.9 Chan 26	APP CRS 196°	Rwy ldg 7575 TDZE 98 Apt Elev 100
--	------------------------	--

ILS Z or LOC Z RWY 20R

KENAI MUNI (ENA) (PAEN)

DME required. ▼ Circling NA to Rwys 2W and 20W. Circling Rwy 2R, 20L NA at night. # RVR 1800 authorized with use of FD or AP or HUD to DA.		MALSRL 	MISSED APPROACH: Climb to 2200 on ENA VOR/DME R-192 to DIXIT/10 DME and hold.	
ATIS 133.35	ANCHORAGE CENTER 125.7 379.1	KENAI TOWER ★ 121.3 (CTAF) 239.3	GND CON 118.75	KENAI RADIO 122.65



ELEV 100	D TDZE 98
2200	DIXIT ENA 10
ENA R-192	Use I-ENA DME when on the localizer course.
*LOC only	One Minute Holding Pattern
I-ENA 1.4	FREDE I-ENA 5.4
*I-ENA 2.6	TBONE I-ENA 11.8
1400	4500
1400	2000
1.2 NM	2.8 NM
6.4 NM	
GS 3.00°	TCH 51
CATEGORY	A B C D
S-ILS 20R#	298/24 200 (200-1/2)
S-LOC 20R	520/24 422 (500-1/2) 520/40 422 (500-3/4)
C CIRCLING	560-1 580-1 580-1 1/2 680-2 460 (500-1) 480 (500-1) 480 (500-1/2) 580 (600-2)

AK, 26 DEC 2024 to 20 FEB 2025

AK, 26 DEC 2024 to 20 FEB 2025