

| | | | |
|--|------------------------|--|-------------|
| WAAS CH 69404 W02A | APP CRS 016° | Rwy Idg TDZE 94 Apt Elev 100 | 7575 |
|--|------------------------|--|-------------|

RNAV (GPS) RWY 2L

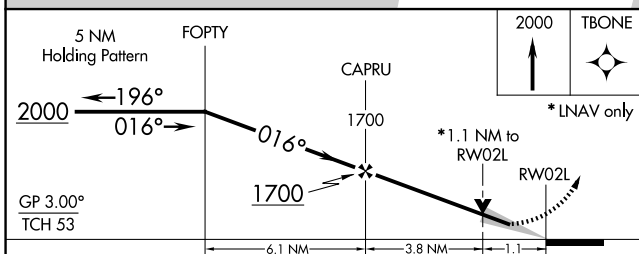
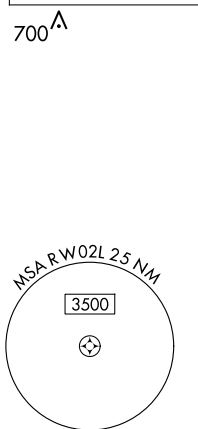
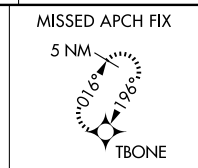
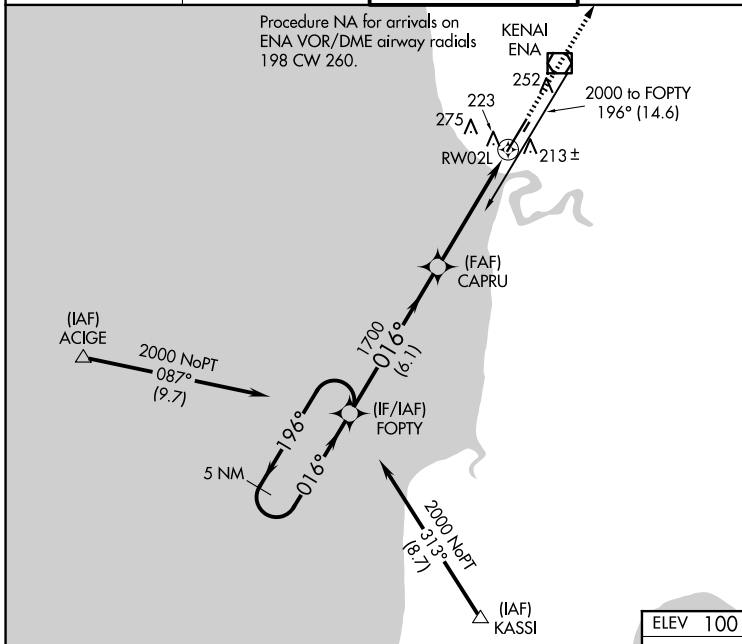
KENAI MUNI (ENA) (PAEN)

RNP APCH.

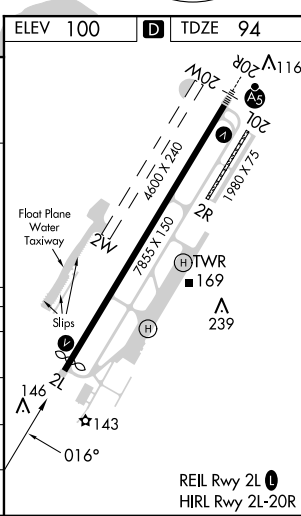
⚠ Baro-VNAV NA when using Soldotna altimeter setting. For uncompensated Baro-VNAV systems, LNAV/VNAV NA below -18°C (0°F) or above 54°C (130°F). When local altimeter setting not received, use Soldotna altimeter setting: increase LPV DA to 366 feet and LNAV/VNAV DA to 429 feet and all MDA 40 feet; increase LPV and LNAV/VNAV visibility all Cats and LNAV Cat C/D visibility 1/8 mile; increase Circling Cat D visibility 1/4 mile. VDP NA when using Soldotna altimeter setting. Circling Rwy 2R, 20L NA at night. Circling Rwy 2W, 20W NA.

MISSED APPROACH:
Climb to 2000 direct
TBONE and hold.

| | | | | |
|-----------------------|--|---|--------------------------|------------------------------|
| ATIS 133.35 | ANCHORAGE CENTER 125.7 379.1 | KENAI TOWER* 121.3 (CTAF) 0 239.3 | GND CON 118.75 | KENAI RADIO 122.65 |
|-----------------------|--|---|--------------------------|------------------------------|



| CATEGORY | A | B | C | D |
|--------------|-----------------------|-------------|---------------------------|-------------|
| LPV DA | 344-3/4 250 (300-3/4) | | | |
| LNAV/VNAV DA | 407-1 313 (400-1) | | | |
| LNAV MDA | 480-1 386 (400-1) | | 480-1 1/8 386 (400-1 1/8) | |
| CIRCLING | 560-1 | 580-1 | 580-1 1/2 | 740-2 |
| | 460 (500-1) | 480 (500-1) | 480 (500-1 1/2) | 640 (700-2) |



AK, 26 DEC 2024 to 20 FEB 2025

AK, 26 DEC 2024 to 20 FEB 2025