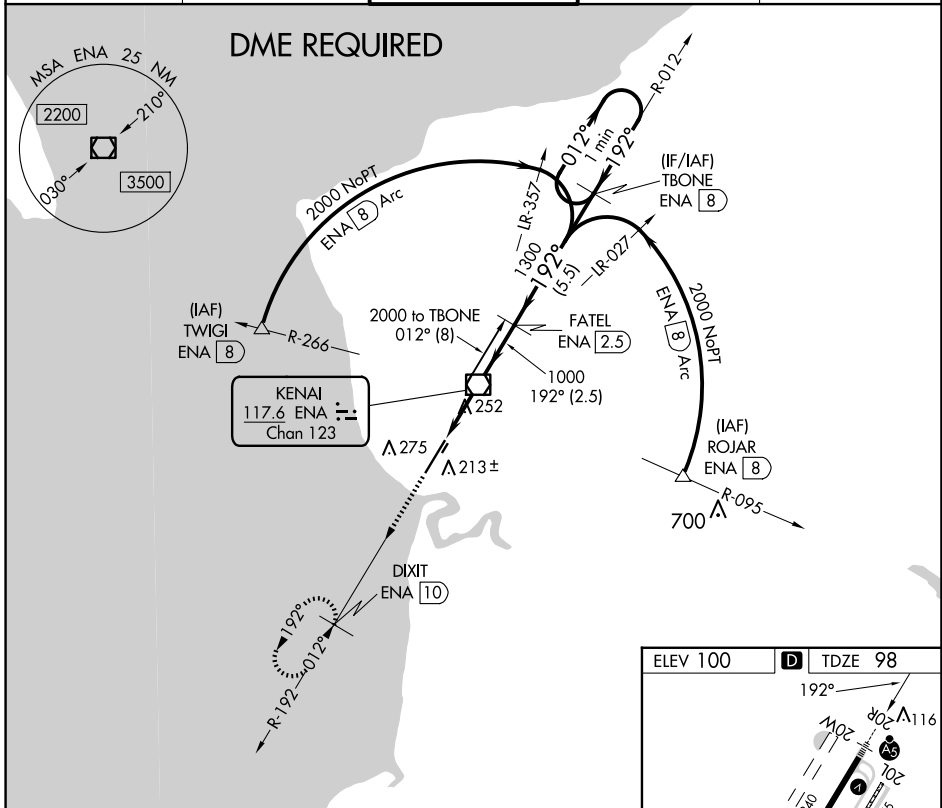


|  |                        |  |
|--|------------------------|--|
| VOR/DME ENA<br><b>117.6</b><br>Chan <b>123</b> | APP CRS<br><b>192°</b> | Rwy Idg <b>7575</b><br>TDZE <b>98</b><br>Apt Elev <b>100</b> |
|--|------------------------|--|

# VOR RWY 20R

KENAI MUNI (ENA) (PAEN)

|  |  |  |
|--|--|--|
| <p><b>⚠</b> Circling Rwy 2R, 20L NA at night. DME required. VDP NA when using Soldotna altimeter setting. When local altimeter setting not received, use Soldotna altimeter setting and increase all MDA 40 feet, increase S-20R Cats C and D visibility to RVR 5000. Circling Rwy 2W, 20W NA.</p> | <p>MALSR</p>   | <p>MISSED APPROACH:<br/>Climb to 2200 on ENA<br/>VOR/DME R-192 to DIXIT/ENA<br/>VOR/DME 10 DME and hold.</p> |
|  | <p>ATIS <b>133.35</b>    ANCHORAGE CENTER <b>125.7 379.1</b>    KENAI TOWER* <b>121.3 (CTAF) 239.3</b>    GND CON <b>118.75</b>    KENAI RADIO <b>122.65</b></p> |  |



|                        |                      |  |                       |                      |                            |
|------------------------|----------------------|--|-----------------------|----------------------|----------------------------|
| 2200<br>↑<br>ENA R-192 | DIXIT ENA 10         | VGSI and descent angles not coincident (VGSI Angle 3.00/TCH 51). |                       | TBONE ENA 8          | One Minute Holding Pattern |
| ENA 2.3                | ENA 1.2              | ENA VOR/DME 3.44° TCH 51   | 192°                  | FATEL ENA 2.5        | 2000                       |
| 1.2                    | 1.2                  | 2.5 NM   | 5.5 NM                |                      |                            |
| CATEGORY               | A                    | B  | C                     | D                    |                            |
| S-20R                  | 520/24               | 422 (500-½)  | 520/40                | 422 (500-¾)          |                            |
| CIRCLING               | 560-1<br>460 (500-1) | 580-1<br>480 (500-1)   | 580-1½<br>480 (500-½) | 680-2<br>580 (600-2) |                            |

