

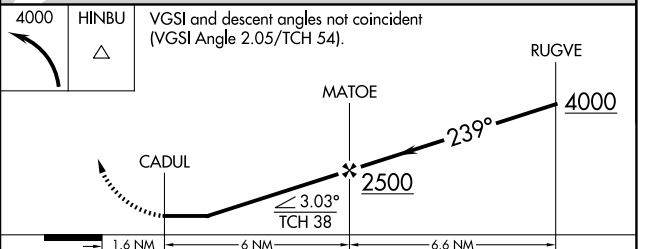
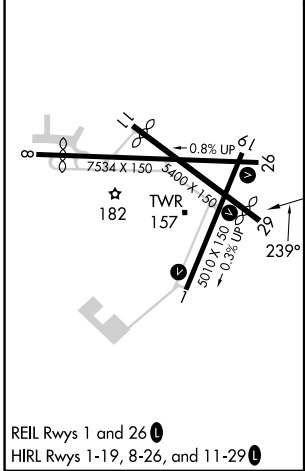
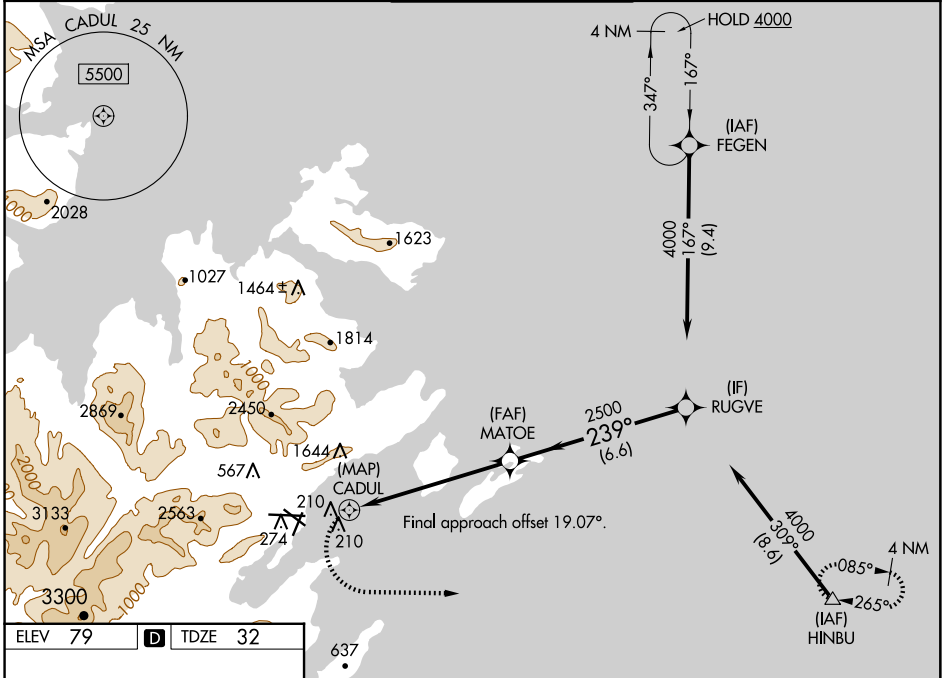
WAAS CH 93941 W26A	APP CRS 239°	Rwy Idg TDZE 32 Apt Elev 79
--	------------------------	---

RNAV (GPS) RWY 26

KODIAK (ADQ)(PADQ)

RNP APCH.		MISSED APPROACH: (Do not exceed 210K until HINBU) Climbing left turn to 4000 direct HINBU and hold, continue climb-in-hold to 4000. *Missed approach requires minimum climb of 357 feet per NM to 1500.		
<p>▼ Circling NA north of Rwy 8-26 and west of Rwy 1-19. ▲ Procedure NA at night. Circling to Rwy 8, 11 and 19 NA. Rapidly rising terrain north, west, and south of airport.</p>				

ATIS 134.45	ANCHORAGE CENTER 125.1 281.4	KODIAK TOWER * 119.8 (CTAF) 239.0	GND CON 121.9	UNICOM 122.8
-----------------------	--	---	-------------------------	------------------------



CATEGORY	A	B	C	D
LP MDA		560-1 $\frac{7}{8}$	528 (500-1 $\frac{7}{8}$)	
LNAV MDA*		560-1 $\frac{7}{8}$	528 (500-1 $\frac{7}{8}$)	
LNAV MDA	940-1 $\frac{7}{8}$	908 (900-1 $\frac{7}{8}$)	940-2 $\frac{1}{2}$	908 (900-2 $\frac{1}{2}$)
C CIRCLING	940-1 $\frac{7}{8}$	861 (900-1 $\frac{7}{8}$)	1140-3 1060 (1100-3)	2020-3 1941 (2000-3)

AK, 26 DEC 2024 to 20 FEB 2025

AK, 26 DEC 2024 to 20 FEB 2025