

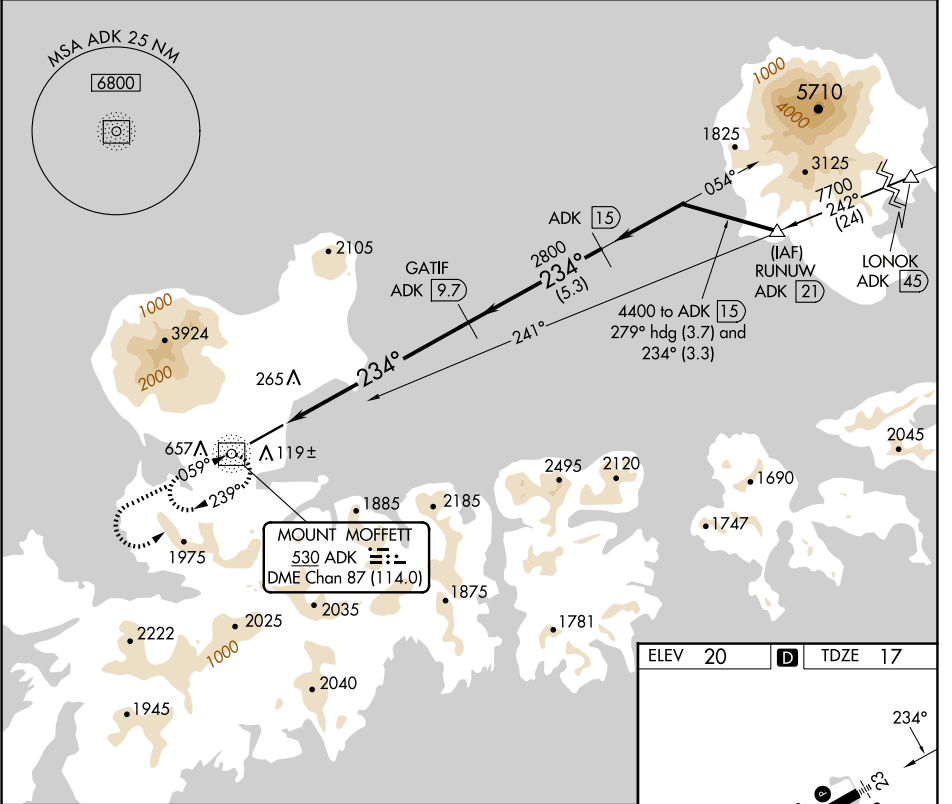
NDB/DME ADK <b>530</b>	APP CRS <b>234°</b>	Rwy ldg <b>6190</b>
Chan <b>87 (114.0)</b>		TDZE <b>17</b>
		Apt Elev <b>20</b>

# NDB/DME RWY 23

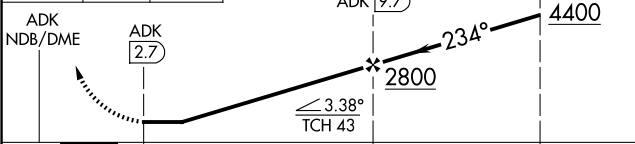
ADAK (ADK)(PADK)

	MALS	MISSED APPROACH: Climb to 5000 via direct ADK NDB/DME and ADK NDB/DME 234° bearing, then climbing left turn to 9000 direct ADK NDB/DME and hold.

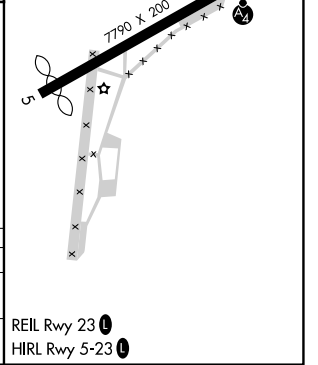
AWOS-3P <b>134.5</b>	ANCHORAGE CENTER <b>126.4 254.3</b>	CTAF <b>122.9</b>
-------------------------	--	----------------------



5000 ↑ ADK 234°	9000 ↘ ADK	ADK	VGSI and descent angles not coincident (VGSI Angle 3.50/TCH 53).
-----------------------	------------------	-----	---



CATEGORY	A	B	C	D
S-23	1600/60 1583 (1600-1¼)	1600-1½ 1583 (1600-1½)	1600-3 1583 (1600-3)	
CIRCLING	1600-1¼ 1580 (1600-1¼)	1600-1½ 1580 (1600-1½)	1600-3 1580 (1600-3)	2540-3 2520 (3000-3)



ELEV 20	D	TDZE 17
---------	---	---------

AK, 26 DEC 2024 to 20 FEB 2025

AK, 26 DEC 2024 to 20 FEB 2025