

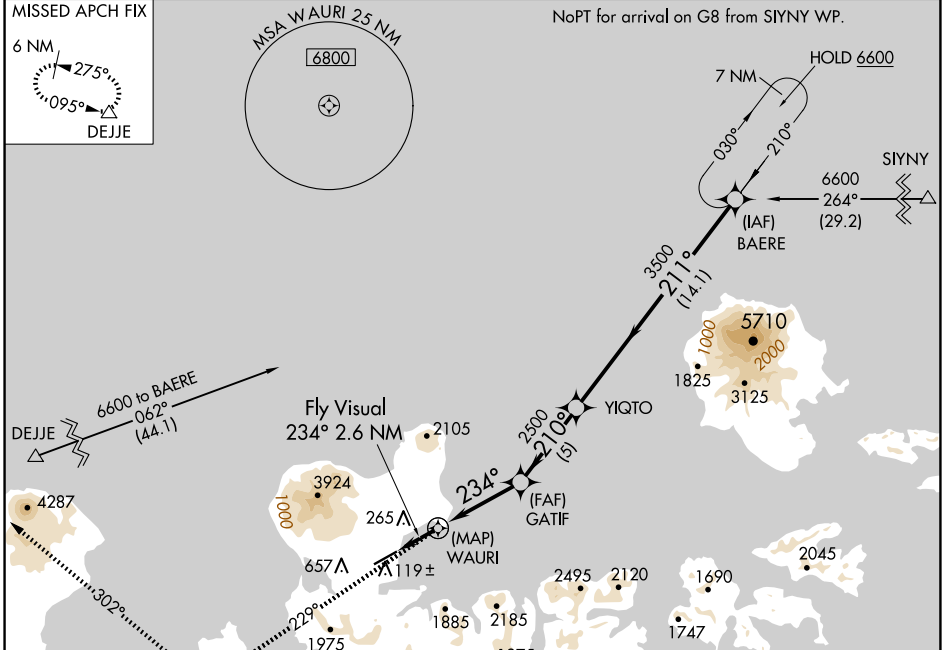
APP CRS	Rwy Idg	6190
234°	TDZE	17
	Apt Elev	20

RNAV (GPS) RWY 23

ADAK (ADK)(PADK)

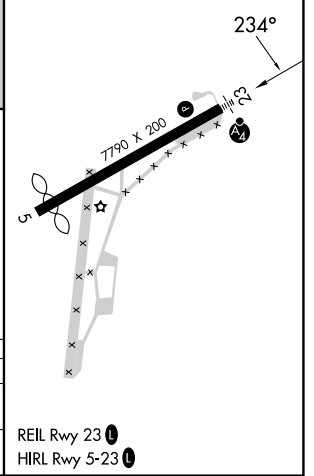
RNP APCH-GPS.	MALS	MISSED APPROACH: Climb to 6600 on course 229° to XERIC, and right turn on course 302° to DEJJE and hold.
 Circling not authorized at night. Circling NA northwest of Rwy 5-23.		

AWOS-3P 134.5	ANCHORAGE CENTER 126.4 254.3	CTAF 122.9
-------------------------	--	----------------------



ELEV	20		TDZE	17
------	----	--	------	----

 6600 XERIC	 DEJJE	 BAERE		
 crs 229°	 crs 302°			
Fly Visual 234° 2.6 NM WAURI	GATIF	YIQTO		
 234°	 210°	 6600		
 2500	 3500	Procedure Turn NA		
 5 NM	 5 NM	 14.1 NM		
CATEGORY	A	B	C	D
LNAV MDA	1220-3 1203 (1200-3)			
CIRCLING	1220-3	1200 (1200-3)	NA	



AK, 26 DEC 2024 to 20 FEB 2025

AK, 26 DEC 2024 to 20 FEB 2025