

WAAS CH 45910 W26A	APP CRS 259°	Rwy Idg 5086 TDZE 174 Apt Elev 192
--	------------------------	---

RNAV (GPS) RWY 26

ILIAMNA (ILI) (PAIL)

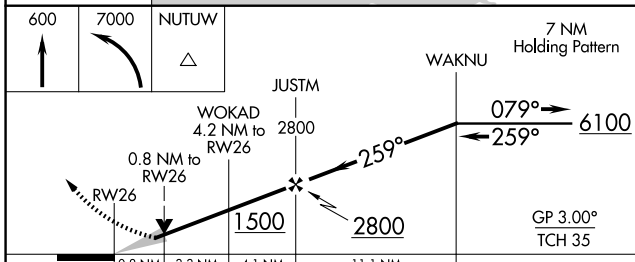
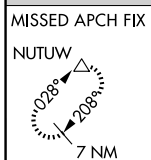
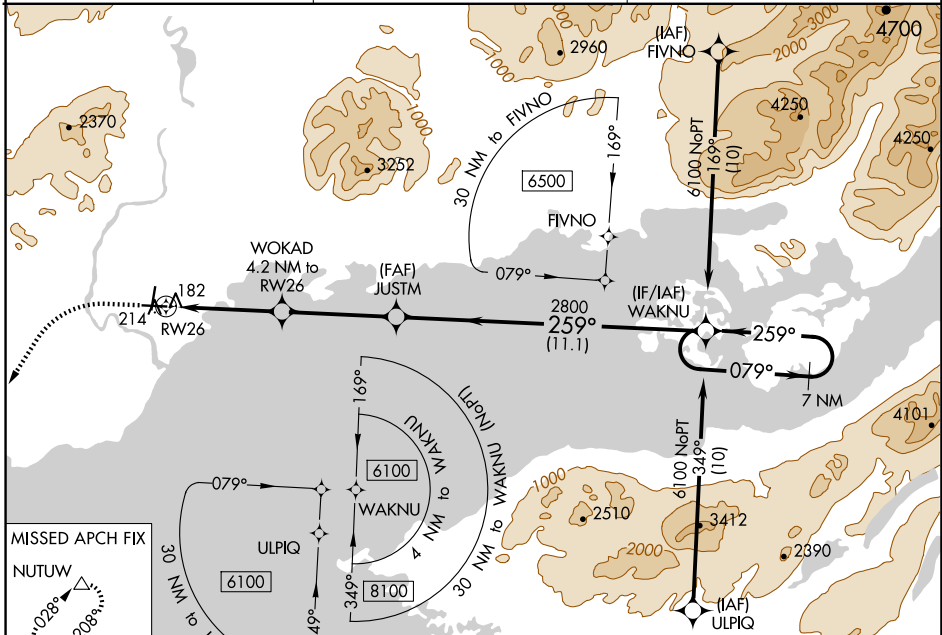
RNP APCH - GPS.

▽ For uncompensated Baro-VNAV systems, procedure NA below -21°C or above 54°C. When local altimeter setting not received, procedure NA.

⚠ -26°C Circling NA to waterways N, S, E, W.

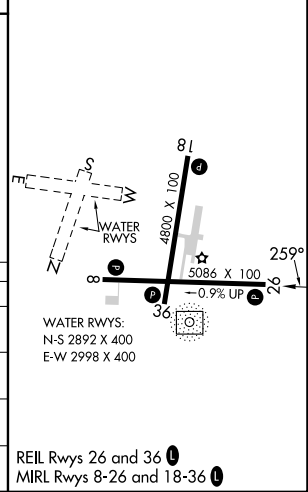
MISSED APPROACH: Climb to 600, then climbing left turn to 7000 direct NUTUW and hold, continue climb-in-hold to 7000.

AFIS 134.95	ANCHORAGE CENTER 118.8	ILIAMNA RADIO 123.6 (CTAF)
-----------------------	----------------------------------	--------------------------------------



ELEV 192	TDZE 174
----------	----------

CATEGORY	A	B	C	D
LPV DA		424-1	250 (300-1)	
LNAV/VNAV DA		424-1	250 (300-1)	
LNAV MDA		440-1	266 (300-1)	
C CIRCLING	740-1	548 (600-1)	820-1 ³ / ₄ 628 (700-1 ³ / ₄)	1700-3 1508 (1600-3)



AK, 26 DEC 2024 to 20 FEB 2025

AK, 26 DEC 2024 to 20 FEB 2025